

# Printer Controller EB-105EX

---

## Configuration Guide

*For use with the following copiers:*

Ricoh Aficio 2090/2105

Savin 4090/40105

Gestetner 9002/10512

nashuatec 9005/10515

Rex Rotary 9008/10518

Lanier LD090/LD0105

infotec 2090/2105



## About the Documentation

This manual is part of a set of Printer Controller EB-105EX™ documentation that includes the following manuals for users and system administrators:

- The *Quick Start Guide* summarizes the steps for configuring the Printer Controller EB-105EX and printing. It also describes how to access the online documentation.
- The *User Software Installation Guide* describes how to install software from the User Software CD to enable users to print to the Printer Controller EB-105EX and set up printing connections to the Printer Controller EB-105EX.
- The *Configuration Guide* explains basic configuration and administration of the Printer Controller EB-105EX for supported platforms and network environments. It also includes guidelines for setting up UNIX, Microsoft Windows NT 4.0/2000, and Novell NetWare servers to provide printing services to users.
- The *Printing Guide* describes the printing features of the Printer Controller EB-105EX for users who send jobs from their computers.
- The *Job Management Guide* explains the functions of job management utilities, including Command WorkStation™, Command WorkStation LE™, and Fiery DocBuilderPro™, and how to use them to monitor and manage jobs on the Printer Controller EB-105EX. This manual is intended for an operator, administrator, or user with the necessary access privileges, who monitors and manages job flow, and troubleshoots problems that may arise.
- The *User Addendum* describes advanced PostScript print options in the Windows 98/Me, Windows NT 4.0/2000/XP, and Apple Mac OS printer drivers.
- *Release Notes* provide last-minute product information and workarounds for some of the problems you may encounter.

Copyright © 2003 Electronics for Imaging, Inc. All rights reserved.

This publication is protected by copyright, and all rights are reserved. No part of it may be reproduced or transmitted in any form or by any means for any purpose without express prior written consent from Electronics for Imaging, Inc. Information in this document is subject to change without notice and does not represent a commitment on the part of Electronics for Imaging, Inc.

This publication is provided in conjunction with an EFI product (the "Product") which contains EFI software (the "Software"). The Software is furnished under license and may only be used or copied in accordance with the terms of the Software license set forth below.

The Product may be covered by one or more of the following U.S. Patents: 4,917,488, 4,941,038, 5,109,241, 5,150,454, 5,150,454, 5,170,182, 5,212,546, 5,278,599, 5,335,040, 5,343,311, 5,424,754, 5,467,446, 5,506,946, 5,517,334, 5,537,516, 5,543,940, 5,553,200, 5,565,960, 5,615,314, 5,619,624, 5,625,712, 5,640,228, 5,666,436, 5,760,913, 5,818,645, 5,835,788, 5,866,856, 5,867,179, 5,959,867, 5,970,174, 5,995,724, 6,002,795, 6,025,922, 6,041,200, 6,046,420, 6,065,041, 6,067,080, 6,112,665, 6,116,707, 6,118,205, 6,122,407, 6,134,018, 6,141,120, 6,151,014, 6,166,821, 6,184,873, 6,185,335, 6,201,614, 6,215,562, 6,219,659, 6,222,641, 6,224,048, 6,225,974, 6,226,419, 6,239,895, 6,256,108, 6,265,676, 6,266,051, 6,269,190, 6,289,122, 6,292,177, 6,292,270, 6,300,580, 6,310,697, 6,323,893, 6,326,565, 6,327,047, 6,327,050, 6,327,052, 6,330,071, 6,331,899, 6,335,723, 6,340,975, 6,341,017, 6,341,018, 6,341,307, 6,348,978, 6,356,359, 6,369,895, 6,373,003, 6,381,036, 6,400,443, 6,414,673, 6,424,340, 6,429,949, 6,449,393, 6,456,280, 6,476,927, 6,490,696, 6,501,461, 6,501,565, 6,519,053, D341,131, D406,117, D416,550, D417,864, D419,185, D426,206, D430,206, D439,851, D444,793, RE33,973, RE36,947

#### Trademarks

Bestcolor, ColorWise, eBeam, EDOX, EFI, Fiery, the Fiery logo, Fiery Driven, RIP-While-Print, and Spot-On are registered trademarks of Electronics for Imaging, Inc. in the U.S. Patent and Trademark Office and/or certain other foreign jurisdictions.

The Best logo, the eBeam logo, the Electronics for Imaging logo, the Fiery Driven logo, the Intelligent Device Management logo, the PrintMe logo, the Splash logo, the Unimobile logo, the Velocity OneFlow logo, Everywhere You Go, Changing the Way the World Prints, AutoCal, AutoGray, Best, ColorCal, Command WorkStation, Device IQ, DocBuilder, DocBuilder Pro, DocStream, FreeForm, Fiery Link, Fiery Prints, Fiery Spark, NetWise, PrintMe, PrintMe Enterprise, PrintMe Networks, RIPChips, ScanBuilder, Splash, Unimobile, Velocity, Velocity Balance, Velocity Build, Velocity Estimate, Velocity Exchange, Velocity OneFlow, Velocity Scan, VisualCal, WebInstaller, WebScan, WebSpooler, WebStatus, and WebTools are trademarks of Electronics for Imaging, Inc.

All other terms and product names may be trademarks or registered trademarks of their respective owners, and are hereby acknowledged.

#### Legal Notices

**APPLE COMPUTER, INC. ("APPLE") MAKES NO WARRANTIES, EXPRESS OR IMPLIED, INCLUDING WITHOUT LIMITATION THE IMPLIED WARRANTIES OF MERCHANTABILITY AND FITNESS FOR A PARTICULAR PURPOSE, REGARDING THE APPLE SOFTWARE. APPLE DOES NOT WARRANT, GUARANTEE, OR MAKE ANY REPRESENTATIONS REGARDING THE USE OR THE RESULTS OF THE USE OF THE APPLE SOFTWARE IN TERMS OF ITS CORRECTNESS, ACCURACY, RELIABILITY, CURRENTNESS, OR OTHERWISE. THE ENTIRE RISK AS TO THE RESULTS AND PERFORMANCE OF THE APPLE SOFTWARE IS ASSUMED BY YOU. THE EXCLUSION OF IMPLIED WARRANTIES IS NOT PERMITTED BY SOME STATES. THE ABOVE EXCLUSION MAY NOT APPLY TO YOU.**

**IN NO EVENT WILL APPLE, ITS DIRECTORS, OFFICERS, EMPLOYEES OR AGENTS BE LIABLE TO YOU FOR ANY CONSEQUENTIAL, INCIDENTAL OR INDIRECT DAMAGES (INCLUDING DAMAGES FOR LOSS OF BUSINESS PROFITS, BUSINESS INTERRUPTION, LOSS OF BUSINESS INFORMATION, AND THE LIKE) ARISING OUT OF THE USE OR INABILITY TO USE THE APPLE SOFTWARE EVEN IF APPLE HAS BEEN ADVISED OF THE POSSIBILITY OF SUCH DAMAGES. BECAUSE SOME STATES DO NOT ALLOW THE EXCLUSION OR LIMITATION OF LIABILITY FOR CONSEQUENTIAL OR INCIDENTAL DAMAGES, THE ABOVE LIMITATIONS MAY NOT APPLY TO YOU.** Apple's liability to you for actual damages from any cause whatsoever, and regardless of the form of the action (whether in contract, tort [including negligence], product liability or otherwise), will be limited to \$50.

PANTONE® Colors displayed in the software application or in the user documentation may not match PANTONE-identified standards. Consult current PANTONE Color Publications for accurate color. PANTONE® and other Pantone, Inc. trademarks are the property of Pantone, Inc. © Pantone, Inc., 2003.

Pantone, Inc. is the copyright owner of color data and/or software which are licensed to Electronics for Imaging, Inc., to distribute for use only in combination with the products, or software of Electronics for Imaging, Inc. PANTONE Color Data and/or Software shall not be copied onto another disk or into memory except as part of the delivery of the Electronics for Imaging, Inc., products or software.

This product includes software developed by the Apache Software Foundation (<http://www.apache.org/>).

**FCC Information**

WARNING: FCC Regulations state that any unauthorized changes or modifications to this equipment not expressly approved by the manufacturer could void the user's authority to operate this equipment.

**Class B Declaration of Conformity**

This equipment has been tested and found to comply with the limits for a class B digital device, pursuant to Part 15 of the FCC rules. These limits are designed to provide reasonable protection against harmful interference in a residential installation. This equipment generates, uses and can radiate radio frequency energy and if not installed and used in accordance with the instructions, may cause harmful interference to radio communications. However, there is no guarantee that interference will not occur in a particular installation.

If this equipment does cause harmful interference to radio or television reception, which can be determined by turning the equipment off and on, the user is encouraged to try to correct the interference by one or more of the following measures:

Reorient or relocate the receiving antenna.

Increase the separation between the equipment and receiver.

Connect the equipment into an outlet on a circuit different from that to which the receiver is connected.

Consult the dealer or an experienced radio/TV technician for help.

In order to maintain compliance with FCC regulations, shielded cables must be used with this equipment. Operation with non-approved equipment or unshielded cables is likely to result in interference to radio and TV reception. The user is cautioned that changes and modifications made to the equipment without the approval of manufacturer could void the user's authority to operate this equipment.

**Industry Canada Class B Notice**

This Class B digital apparatus complies with Canadian ICES-003.

**Avis de Conformation Classe B de l'Industrie Canada**

Cet appareil numérique de la Classe B est conforme à la norme NMB-003 du Canada.

**RFI Compliance Notice**

This equipment has been tested concerning compliance with the relevant RFI protection requirements both individually and on system level (to simulate normal operation conditions). However, it is possible that these RFI Requirements are not met under certain unfavorable conditions in other installations. It is the user who is responsible for compliance of his particular installation.

Dieses Gerät wurde sowohl einzeln als auch in einer Anlage, die einen normalen Anwendungsfall nachbildet, auf die Einhaltung der Funkentstörbestimmungen geprüft. Es ist jedoch möglich, dass die Funkentstörbestimmungen unter ungünstigen Umständen bei anderen Gerätekombinationen nicht eingehalten werden. Für die Einhaltung der Funkentstörbestimmungen einer gesamten Anlage, in der dieses Gerät betrieben wird, ist der Betreiber verantwortlich.

Compliance with applicable regulations depends on the use of shielded cables. It is the user who is responsible for procuring the appropriate cables.

Die Einhaltung zutreffender Bestimmungen hängt davon ab, dass geschirmte Ausführungen benutzt werden. Für die Beschaffung richtiger Ausführungen ist der Betreiber verantwortlich.

**Software License Agreement**

YOU SHOULD CAREFULLY READ THE FOLLOWING TERMS AND CONDITIONS BEFORE USING THIS SOFTWARE. IF YOU DO NOT AGREE TO THE TERMS AND CONDITIONS OF THIS AGREEMENT, DO NOT USE THE SOFTWARE. INSTALLING OR USING THE SOFTWARE INDICATES THAT YOU AGREE TO AND ACCEPT THE TERMS OF THIS AGREEMENT. IF YOU DO NOT AGREE TO ACCEPT THE TERMS OF THIS AGREEMENT YOU MAY RETURN THE UNUSED SOFTWARE FOR A FULL REFUND TO THE PLACE OF PURCHASE.

## **License**

EFI grants you a non-exclusive license to use the Software and accompanying documentation ("Documentation") included with the Product. The Software is licensed, not sold. You may use the Software solely for your own customary business or personal purposes. You may not rent, lease, sublicense or lend the Software or use the Software in any time sharing, service bureau, or similar arrangement.

You may not make or have made, or permit to be made, any copies of the Software or portions thereof, except one (1) copy for backup or archive purposes in support of your use of the Software as permitted hereunder. You may not copy the Documentation. You may not attempt to localize, translate, disassemble, decompile, decrypt, reverse engineer, discover the source code of, modify, create derivative works of, or in any way change any part of the Software.

The terms, conditions, and restrictions in the License Agreement apply to all bug fixes, patches, releases, release notes, updates, and upgrades related to the Software.

## **Proprietary Rights**

You acknowledge and agree that all rights, title and interest, including all intellectual property rights, in and relating to the Software, Documentation and all modifications and derivative works thereof are solely owned by and shall remain with EFI and its suppliers. Except for the express limited license granted above to use the Software, no right or license of any kind is granted. You receive no rights or license under any patents, copyrights, trade secrets, or trademarks (whether registered or unregistered). You agree not to adopt, register, or attempt to register any EFI trademark or trade name ("EFI Mark") or any confusingly similar mark, URL, internet domain name, or symbol as your own name or the name of your affiliates or products, and not to take any other action which impairs or reduces the trademark rights of EFI or its suppliers.

## **Confidentiality**

The Software is confidential, proprietary information of EFI and you may not distribute or disclose the Software. You may, however, permanently transfer all of your rights under this Agreement to another person or legal entity provided that: (1) such a transfer is authorized under all applicable export laws and regulations, including the U.S. Export Administration Regulations, (2) you transfer to the person or entity all of the Software and Documentation (including all copies, updates, upgrades, prior versions, component parts, the media and printed materials, and this Agreement); (3) you retain no copies of the Software and Documentation, including copies stored on a computer; and (4) the recipient agrees to the terms and conditions of this Agreement.

## **Remedies and Termination**

Unauthorized use, copying, or disclosure of the Software, or any breach of this Agreement will result in automatic termination of this license and will make available to EFI other legal remedies. In the event of termination, you must destroy all copies of the Software, Documentation, and all component parts thereof. All provisions of this Agreement relating to disclaimers of warranties, limitation of liability, remedies, damages, governing law, jurisdiction, venue, and EFI's proprietary rights shall survive termination.

## **Limited Warranty and Disclaimer**

EFI warrants to the original purchaser ("Customer") for thirty (30) days from the date of original purchase from EFI or its authorized retailer that the Software will perform in substantial conformance to the Documentation when the Product is used as authorized by EFI's specifications. EFI warrants the media containing the Software against failure during the above warranty period. EFI makes no warranty or representation that the Software will meet your specific requirements, that the operation of the Software will be uninterrupted, secure, fault-tolerant, or error free, or that all defects in the Software will be corrected. EFI makes no warranty, implied or otherwise, regarding the performance or reliability of any third party products (software or hardware). THE INSTALLATION OF ANY THIRD PARTY PRODUCTS OTHER THAN AS AUTHORIZED BY EFI WILL VOID THIS WARRANTY. IN ADDITION, USE, MODIFICATION, AND/OR REPAIR OF THE PRODUCT OTHER THAN AS AUTHORIZED BY EFI WILL VOID THIS WARRANTY.

EXCEPT FOR THE ABOVE EXPRESS LIMITED WARRANTY AND TO THE MAXIMUM EXTENT PERMITTED BY APPLICABLE LAW, EFI MAKES AND YOU RECEIVE NO WARRANTIES OR CONDITIONS ON THE SOFTWARE, EXPRESS, IMPLIED, STATUTORY, OR IN ANY OTHER PROVISION OF THIS AGREEMENT OR COMMUNICATION WITH YOU, AND EFI SPECIFICALLY DISCLAIMS ANY IMPLIED WARRANTY OR CONDITION OF MERCHANTABILITY OR FITNESS FOR A PARTICULAR PURPOSE OR NONINFRINGEMENT OF THIRD PARTY RIGHTS.

**Limitation of Liability**

TO THE MAXIMUM EXTENT PERMITTED BY LAW, EFI AND ITS SUPPLIERS SHALL NOT BE LIABLE FOR ANY DAMAGES, INCLUDING LOSS OF DATA, LOST PROFITS, COST OF COVER OR OTHER SPECIAL, INCIDENTAL, CONSEQUENTIAL OR INDIRECT DAMAGES ARISING FROM THE SALE, INSTALLATION, MAINTENANCE, USE, PERFORMANCE OR FAILURE OF THE SOFTWARE, HOWEVER CAUSED AND ON ANY THEORY OF LIABILITY. THIS LIMITATION WILL APPLY EVEN IF EFI HAS BEEN ADVISED OF THE POSSIBILITY OF SUCH DAMAGE. YOU ACKNOWLEDGE THAT THE PRICE OF THE PRODUCT REFLECTS THIS ALLOCATION OF RISK. BECAUSE SOME JURISDICTIONS DO NOT ALLOW THE EXCLUSION OR LIMITATION OF LIABILITY FOR CONSEQUENTIAL OR INCIDENTAL DAMAGES, THE ABOVE LIMITATION MAY NOT APPLY TO YOU.

You are hereby notified that Adobe Systems Incorporated, a Delaware corporation located at 345 Park Avenue, San Jose, CA 95110-2704 ("Adobe") is a third-party beneficiary to this agreement to the extent that this agreement contains provisions which relate to your use of any software, font programs, typefaces, and/or trademarks licensed or supplied by Adobe. Such provisions are made expressly for the benefit of Adobe and are enforceable by Adobe in addition to EFI. ADOBE WILL HAVE NO LIABILITY WHATSOEVER TO YOU FOR ANY ADOBE SOFTWARE OR TECHNOLOGY LICENSED HEREUNDER.

**Export Controls**

EFI's Products are subject to U.S. export laws and regulations, including the U.S. Export Administration Regulations, as well as foreign export laws and regulations. You agree that you will not use, distribute, transfer, export, or re-export any portion of the Product or the Software in any form in violation of any applicable laws or regulations of the United States or the country in which you obtained them.

**U.S. Government Restricted Rights:**

Use, duplication, or disclosure of the Software by the United States Government is subject to restrictions as set forth in FAR 12.212 or DFARS 227.7202-3 - 227.7202-4 and, to the extent required under U.S. federal law, the minimum restricted rights as set out in FAR 52.227-14, Restricted Rights Notice (June 1987) Alternate III(g)(3)(June 1987) or FAR 52.227-19 (June 1987). To the extent any technical data is provided pursuant to the Agreement, such data is protected per FAR 12.211 and DFARS 227.7102-2 and to the extent explicitly required by the U.S. Government, is subject to limited rights as set out in DFARS 252.227.7015 (November 1995) and DFARS 252.227-7037 (September 1999). In the event that any of the above referenced agency regulations are modified or superceded, the subsequent or equivalent regulation shall apply. The name of the Contractor is Electronics for Imaging.

**General**

The rights and obligations of the parties related to this Agreement will be governed in all respects by the laws of the State of California exclusively, as such laws apply to contracts between California residents performed entirely within California. The United Nations Convention on Contracts for the International Sale of Goods and any other similar convention does not apply to this Agreement. For all disputes related to this Agreement, you consent to the personal and exclusive jurisdiction and venue of the state courts in San Mateo County, California and the federal court for the Northern District of California. This Agreement is the entire agreement held between us and supersedes any other communications or advertising with respect to the Software. If any provision of this Agreement is held invalid, such provision shall be deemed modified to the extent necessary to be enforceable and the other provisions in this Agreement shall continue in full force and effect.

If you have any questions, please see EFI's web site at [www.efi.com](http://www.efi.com).

Electronics for Imaging  
303 Velocity Way  
Foster City, CA 94404

# Contents

## About the Documentation

## Introduction

About this manual	xi
-------------------	----

## Chapter 1: Connecting to the Network

<b>EB-105EX on the network</b>	1-1
<b>Stages of installation on the network</b>	1-2
<b>Quick path to installation</b>	1-4
<b>Connecting network cable to the EB-105EX</b>	1-10
Back view of the EB-105EX	1-10
Ethernet connection	1-11

## Chapter 2: Setting Up Network Servers

<b>EB-105EX on a TCP/IP network with Windows NT 4.0/2000/XP</b>	2-1
Tips for experts—Windows NT 4.0/2000/XP with TCP/IP	2-2
Configuring a Windows NT 4.0/2000 server to communicate with the EB-105EX	2-3
<b>EB-105EX on a NetWare network</b>	2-7
Tips for experts—IPX networks	2-8
Overview of IPX printing to the EB-105EX	2-9
Configuring a NetWare server for printing	2-9
<b>EB-105EX on a NetWare network with NDPS</b>	2-14
Tips for experts—NetWare networks	2-14
Configuring a NetWare server for printing	2-15
<b>EB-105EX on a network with UNIX workstations</b>	2-17
Tips for experts—UNIX workstations	2-17
Important note about the remote printer name	2-18
Setting up the EB-105EX on TCP/IP networks	2-18
Managing print jobs	2-20

## Chapter 3: Preparing for EB-105EX Setup

<b>Levels of access and control</b>	3-1
EB-105EX print connections	3-1
Passwords	3-3
Fiery WebTools	3-4
Control level scenarios	3-6
<b>About Setup</b>	3-7
Network server Setup requirements	3-8
Ensuring the copier connection	3-8

## Chapter 4: Performing Setup from the Copier Operation Panel

<b>EB-105EX Setup from the copier operation panel</b>	4-1
<b>Copier operation panel</b>	4-3
Buttons	4-3
Functions menu	4-4
Accessing Setup options	4-6
About the copier operation panel Setup interface	4-6
Types of Setup screens	4-6
<b>Server Setup options</b>	4-7
<b>Network Setup options</b>	4-9
Port Setup options	4-11
Protocol Setup options	4-11
Service Setup options	4-17
<b>Printer Setup options</b>	4-34
<b>PostScript Setup options</b>	4-35
<b>PCL Setup options</b>	4-37
<b>Administrative functions in the Setup menu</b>	4-39
Job Log Setup	4-40
Exit Setup	4-41



## Chapter 5: Performing Setup from a Windows Computer

<b>Accessing Setup</b>	5-1
Remote Fiery Setup	5-1
<b>Server Setup options</b>	5-3
Job Log Setup	5-5
<b>Network Setup</b>	5-6
Ports	5-7
Protocols	5-8
Services	5-10
Windows print sharing with Server Message Block (SMB)	5-20
<b>Printer Setup options</b>	5-26
Printer connections	5-26
PS (PostScript) Setup	5-27
<b>Exiting Setup</b>	5-28
<b>Printing the Configuration page</b>	5-29

## Chapter 6: Configuring Fiery WebTools

<b>Configuring the EB-105EX and clients for Fiery WebTools</b>	6-1
<b>Setting the WebLink destination</b>	6-3

## Chapter 7: Administering the EB-105EX

<b>Administrator functions</b>	7-1
<b>Setting passwords</b>	7-2
Passwords from the copier operation panel	7-2
Passwords from Fiery WebSetup and Command WorkStation	7-3
<b>Clearing the EB-105EX</b>	7-5
<b>Using the EB-105EX hard disk</b>	7-6

<b>Restoring the EB-105EX to factory defaults</b>	7-7
<b>Managing address books</b>	7-8
<b>Printing a Configuration page from the copier operation panel</b>	7-10
<b>Maintaining optimal EB-105EX performance</b>	7-11
<b>Shutting down, rebooting, and restarting the EB-105EX</b>	7-12
Shutting down and rebooting the EB-105EX	7-12
Restarting the EB-105EX	7-13

**Appendix A: Troubleshooting**

<b>Troubleshooting the EB-105EX</b>	C-1
Troubleshooting during Setup from the copier operation panel	C-1
Runtime error messages	C-6

**Index**

## Introduction

This manual is intended for anyone who is responsible for integrating the Printer Controller EB-105EX into a business environment that includes networked personal computers. After setting up the Printer Controller EB-105EX and client workstations, individual users can print to the Printer Controller EB-105EX as a high-performance printer.

This manual describes how to set up network servers and clients to use the Printer Controller EB-105EX and how to set up printing from Microsoft Windows and Apple Mac OS computers. For general information on using the copier, your computer, your software, or your network, see the manuals that accompany those products.

**NOTE:** The term “EB-105EX” is used in this manual to refer to the Printer Controller EB-105EX. The name “Aero” is used in illustrations to represent the EB-105EX. The term “Windows 9x” is used to represent Windows 98. The term “Windows” is used to refer to Windows 98, Windows Me, Windows NT 4.0, Windows 2000, and Windows XP, wherever appropriate.

The EB-105EX includes support for the Fiery WebTools™ and software for Command WorkStation, which allow an operator to manage all jobs sent to the EB-105EX. Although it may not be the case at all sites, the documentation for this product assumes the presence of an operator who controls and manages jobs sent by users from remote workstations.

Any additional connectivity or administrative features specific to the copier are described in the *Printing Guide* or *Release Notes*.

## About this manual

This manual covers the following topics:

- Basic configuration of the EB-105EX to support printing over AppleTalk, TCP/IP, and IPX (Novell) networks
- Administering network printing

- Configuring Novell and Microsoft Windows NT 4.0/2000 servers and UNIX systems to provide EB-105EX printing services
- Using the EB-105EX in mixed network environments

**NOTE:** The network guidelines in this book are not intended to replace the services of an experienced network engineer.

This manual is organized as follows:

- [Chapter 1](#) illustrates the supported network configurations and shows the network connectors on the EB-105EX.
- [Chapter 2](#) provides guidelines for setting up Windows network servers and UNIX systems for printing to the EB-105EX and using Fiery WebTools.
- [Chapter 3](#) describes how to prepare for EB-105EX Setup, including planning system security through access levels.
- [Chapter 4](#) describes EB-105EX Setup from the copier operation panel.
- [Chapter 5](#) describes EB-105EX Setup from a Windows computer.
- [Chapter 6](#) describes setting up the EB-105EX for Fiery WebTools.
- [Chapter 7](#) summarizes some administrative features of EB-105EX software that are available for IPX/SPX, TCP/IP, and AppleTalk networks, and offers troubleshooting hints.
- [Appendix A](#) describes issues that may occur in setting up the EB-105EX and offers solutions.

**NOTE:** Administrator features described in other manuals are summarized on [page 7-1](#).

## Chapter 1: Connecting to the Network

This chapter summarizes the stages in setting up the EB-105EX, and includes diagrams that refer you to other chapters or other manuals to complete your installation. Check those references to find the information you need quickly.

### EB-105EX on the network

When the EB-105EX is connected to a network, it behaves as a networked PCL (Printer Control Language) or PostScript printer. The built-in Ethernet interface on the EB-105EX supports the following network protocols:

- AppleTalk
- TCP/IP (the lpd, nbt, ftp, smtp, snmp, Port 9100, IMAP, POP3, and http protocols)

TCP/IP stands for Transmission Control Protocol/Internet Protocol. The lpd protocol is the standard TCP/IP printing protocol. The nbt protocol supports Windows (SMB) printing. The ftp (file transfer protocol) protocol is used to send files on the internet. The SMTP (simple mail transfer protocol) is the protocol that sends e-mail between servers. The SNMP (simple network management protocol) protocols manage complex networks. The port 9100 is the printer server port number to publish print connections between the print server and a remote workstation. The IMAP (internet message access protocol) protocol retrieves e-mail messages. The POP3 (post office protocol) protocol retrieves e-mail messages with or without SMTP. The http protocol is commonly used for Web pages on the Internet and on intranets. The http protocol also supports IPP printing.

- IPX/SPX (Novell)

IPX/SPX stands for Internetwork Packet Exchange/Sequenced Packet Exchange.

These protocols (rules that enable computers on a network to communicate with each other) are supported on Mac OS, Windows, and UNIX platforms and can run concurrently on the same cable. Workstations that use other protocols can print through a server that uses one of the protocols mentioned.

When you add the EB-105EX to a network, it is assumed that a network administrator has already installed a network cabling system and connected workstations and servers.

## Stages of installation on the network

Installation can be performed by a network or printing administrator. The stages of a successful installation are:

- **Physically connecting the EB-105EX to a functioning network**

Prepare a network node for the EB-105EX—obtain cable, route it to the location where the EB-105EX is to be installed, and attach the cable to the network interface. For details, see [page 3-8](#).

- **Configuring the network server**

When network servers are required, you must configure those servers to provide client access to the EB-105EX as a PCL or PostScript printer. For information on configuring network servers in Windows, Novell, and UNIX network environments, see [Chapter 2](#).

- **Setting up the EB-105EX**

Configure the EB-105EX for your particular printing and network environment. For details, read [Chapter 2](#) and subsequent chapters.

- **Preparing client workstations for printing**

Install the files needed for printing, install additional user software, and connect the client to the EB-105EX over the network. These steps are described in the *User Software Installation Guide*, and some information is also provided in [Chapter 2](#).

- **Administering the EB-105EX**

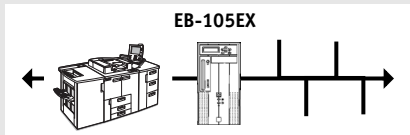
Monitor and maintain system performance and troubleshoot problems that arise. For details, see [Chapter 7](#) of this manual and the *Job Management Guide*.

# 1

## 1-3 Stages of installation on the network

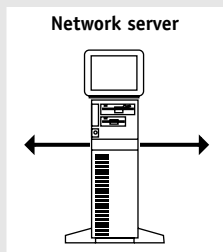
### Summary of EB-105EX network installation

#### CONNECTION



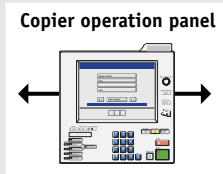
Prepare a network node. Connect the EB-105EX to the network. If you use a workstation running Command WorkStation software, connect it to the network.

#### SERVER CONFIGURATION



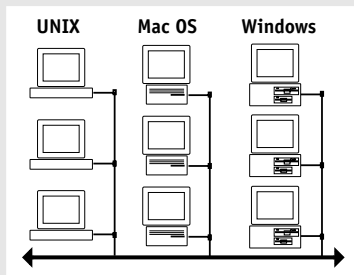
Configure UNIX, Windows NT 4.0/2000, and IPX (Novell) servers to specify EB-105EX print queues and EB-105EX users.

#### EB-105EX SETUP



On the EB-105EX copier operation panel, configure, at a minimum, the Server Setup, Network Setup, and Printer Setup. Configure the remaining Setups.

#### CLIENT SETUP



At each workstation from which users print to the EB-105EX:

- Install the appropriate printer files and connect to one or more queues.
- Install Fiery® utilities and an Internet browser for those workstations that will use them.
- Verify the EB-105EX in the list of printers and run a test print.

**EB-105EX available on the network**


## Quick path to installation


The diagrams on the following pages show typical systems you can use to print and run Fiery software from remote workstations. Find the page with your preferred platform and network type, and then look up the setup procedures referenced in the “Key to setup” in the upper-left corner of each diagram.

The diagrams describe devices that use the supported networking protocols. They are logical diagrams and are not intended to describe the physical arrangement (topology) of devices on the network. A variety of physical arrangements is possible with each logical arrangement. For example, twisted pair Ethernet networks commonly use a star configuration around a hub, rather than a bus arrangement. The design of physical networks is beyond the scope of this manual.

If your network uses more than one protocol or more than one type of workstation, combine the setups listed for each component of your system. Multiple protocols (shown in the diagrams as parallel lines) can run on the same cable. A solid connection from the EB-105EX with an arrow indicates that other supported network types can be operational at the same time.

The protocols used in these diagrams are indicated as follows:

IPX (Novell) 

TCP/IP (lpd,  
nbt, or http) 

AppleTalk 

Other 

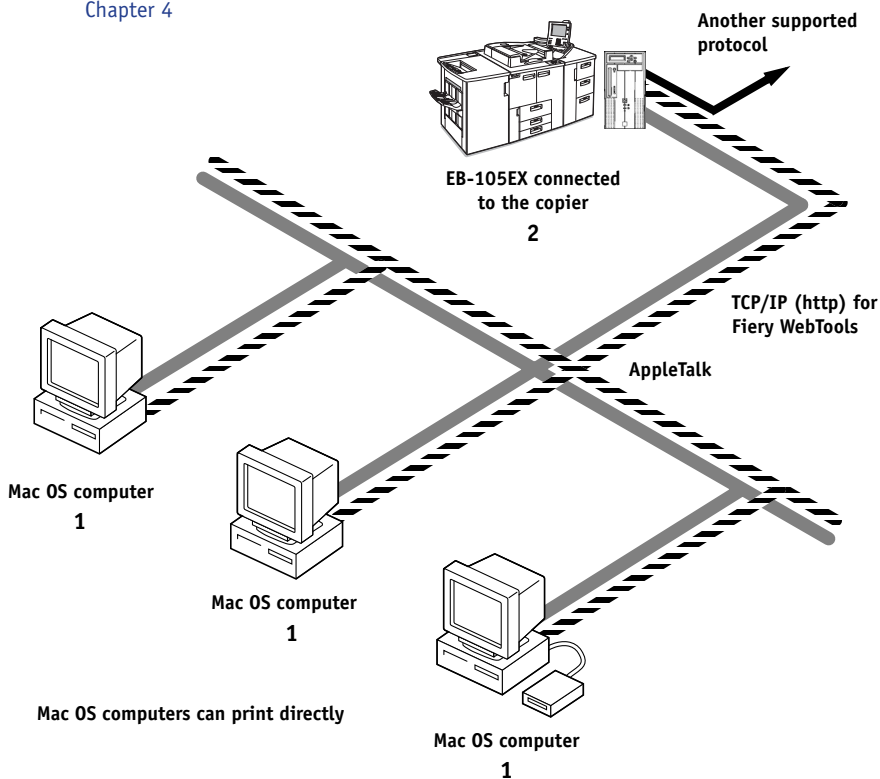


## Mac OS environment with AppleTalk

### Key to setup:

- 1 Mac OS computer
- 2 Fiery Setup

*User Software Installation Guide*  
Chapter 4



### Printing on this network

Mac OS computers print directly, using the AppleTalk and TCP/IP protocols. Mac OS X computers print using the TCP/IP protocol.

### For using Fiery utilities

Fiery Downloader™ on Mac OS computer can be used with the AppleTalk protocol. Other Fiery utilities and Fiery WebTools can be used with the TCP/IP protocol.

### For using Fiery WebTools

A Mac OS computer with TCP/IP (http) loaded.



AppleTalk protocol

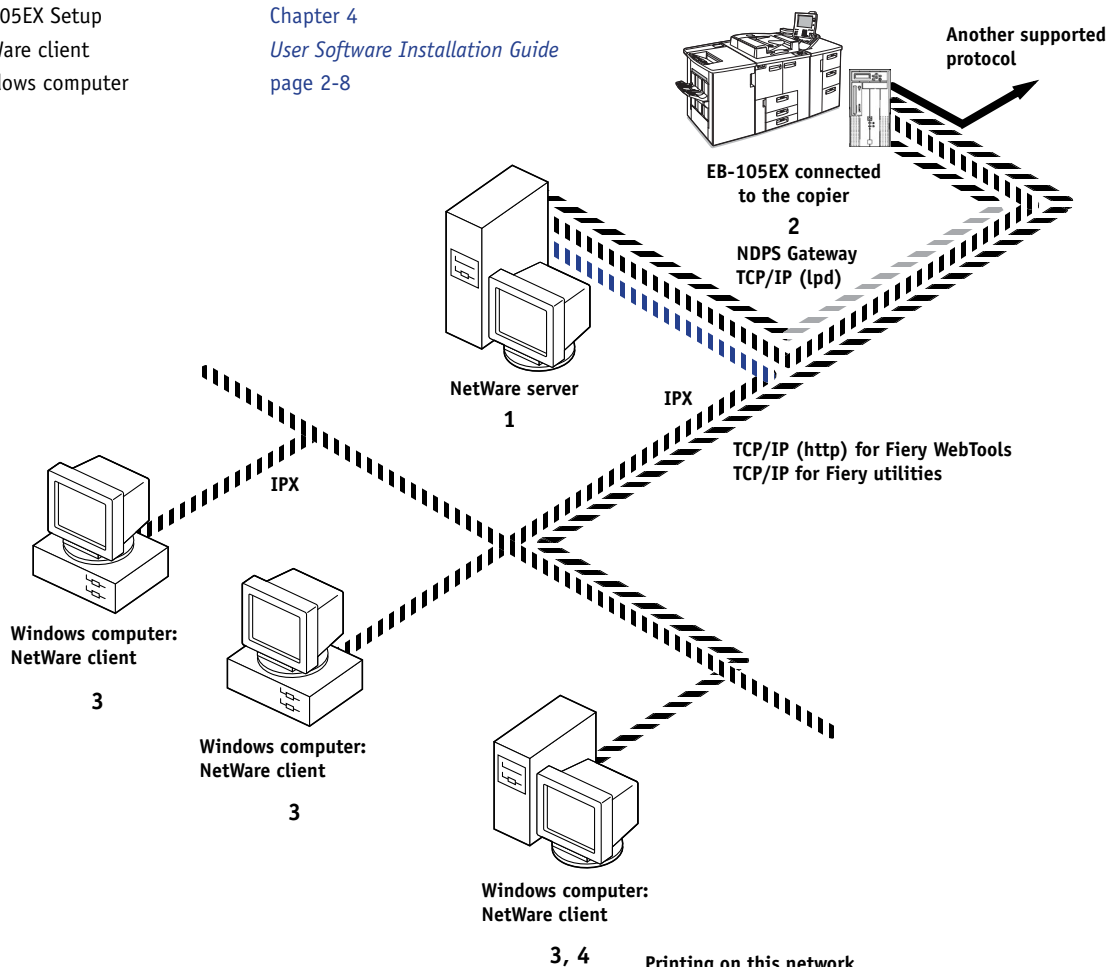


TCP/IP

## Windows computers in a Novell environment

### Key to setup:

- |                    |   |
|--------------------|---|
| 1 NetWare server   | page 2-14                               |
| 2 EB-105EX Setup   | Chapter 4                               |
| 3 NetWare client   | <i>User Software Installation Guide</i> |
| 4 Windows computer | page 2-8                                |



IPX protocol

TCP/IP or  
NDPS Gateway TCP/IP (lpd)

### Printing on this network

All Windows computers can print through the NetWare server.

#### For using Fiery utilities

A Windows computer with TCP/IP loaded.

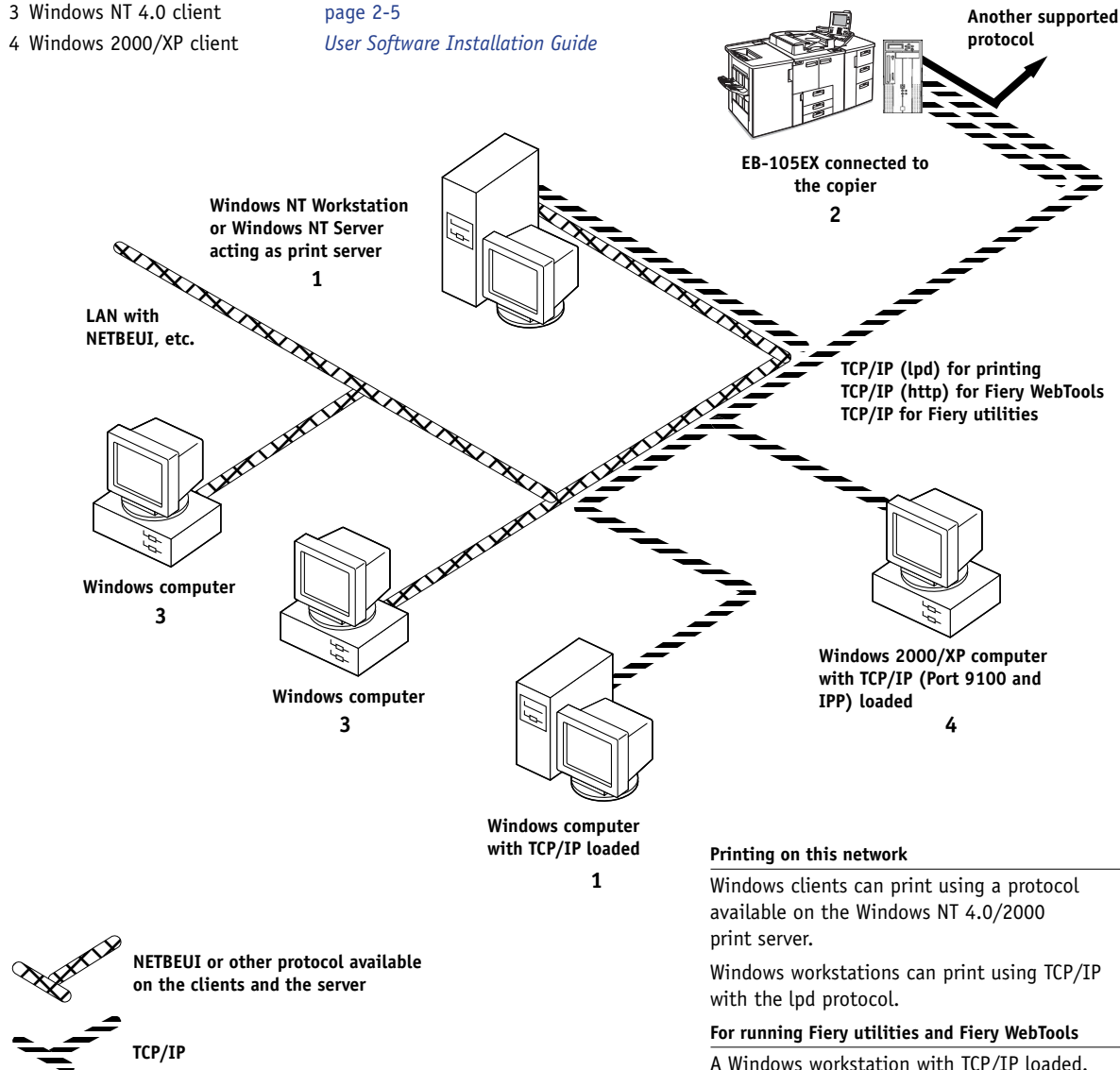
#### For using Fiery WebTools

A Windows computer with TCP/IP (http) loaded.

## Windows NT 4.0/2000 Server environment

## Key to setup:

- 1 Windows NT 4.0 Server [page 2-3](#)
- 2 EB-105EX Setup [Chapter 4](#)
- 3 Windows NT 4.0 client [page 2-5](#)
- 4 Windows 2000/XP client [User Software Installation Guide](#)



## Printing on this network

Windows clients can print using a protocol available on the Windows NT 4.0/2000 print server.

Windows workstations can print using TCP/IP with the lpd protocol.

## For running Fieri utilities and Fieri WebTools

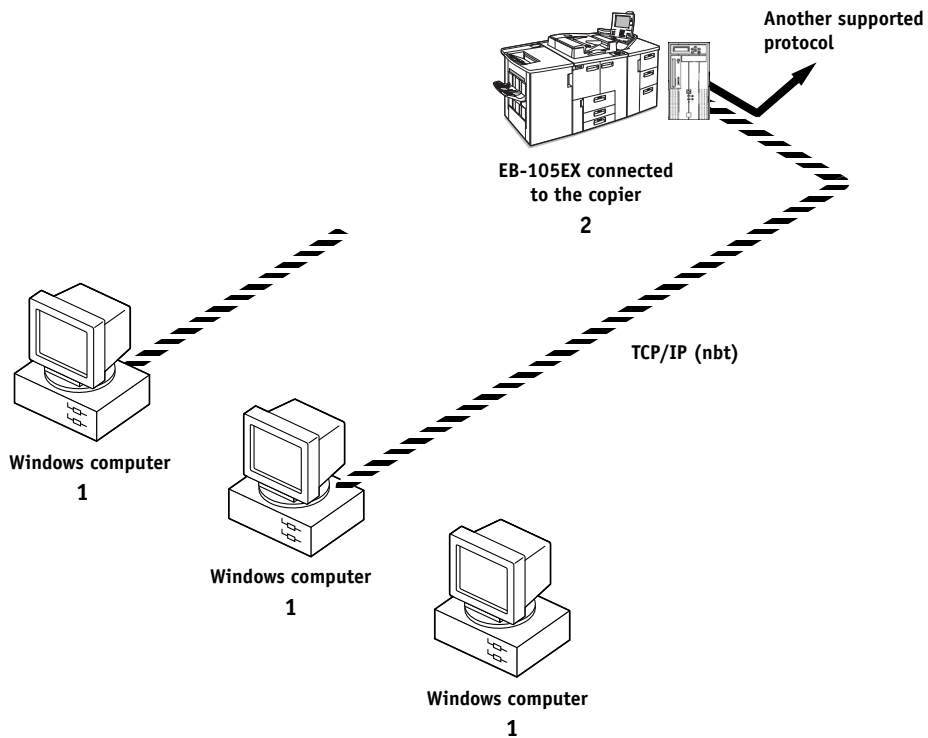
A Windows workstation with TCP/IP loaded.

## Windows computers using Windows printing

### Key to setup:

- 1 Windows computer
- 2 EB-105EX Setup

*User Software Installation Guide*  
Chapter 4



TCP/IP (nbt) protocol

### For Windows printing

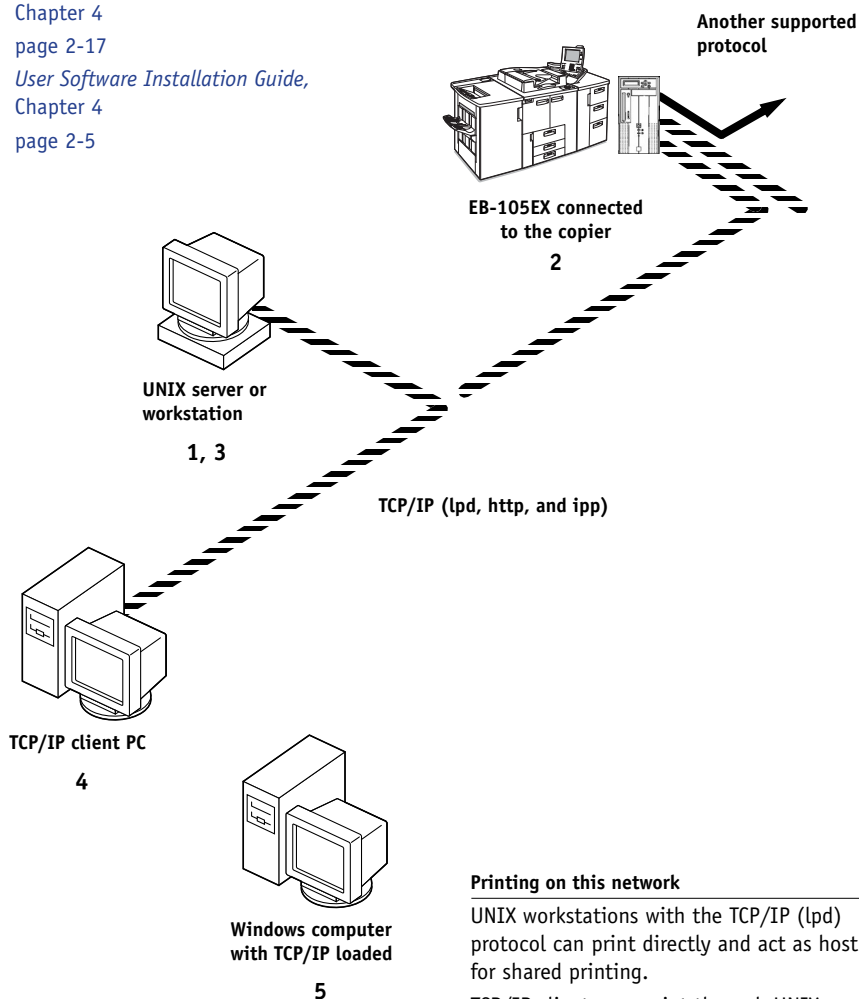
Windows (SMB) printing enabled on the EB-105EX.

Windows NetBios and TCP/IP enabled on the computer.

## UNIX workstations and Windows computers on a TCP/IP network

### Key to setup:

- |                         |   |
|-------------------------|---|
| 1 UNIX server/host      | page 2-17   |
| 2 EB-105EX Setup        | Chapter 4   |
| 3 UNIX workstation      | page 2-17   |
| 4 TCP/IP client         | <i>User Software Installation Guide,</i><br>Chapter 4 |
| 5 Windows NT 4.0 client | page 2-5  |



### Printing on this network

UNIX workstations with the TCP/IP (lpd) protocol can print directly and act as host for shared printing.

TCP/IP clients can print through UNIX server or directly; requires TCP/IP and the lpr print service loaded.

### For running Fiery utilities and Fiery WebTools

Windows computers with TCP/IP loaded can use these applications.

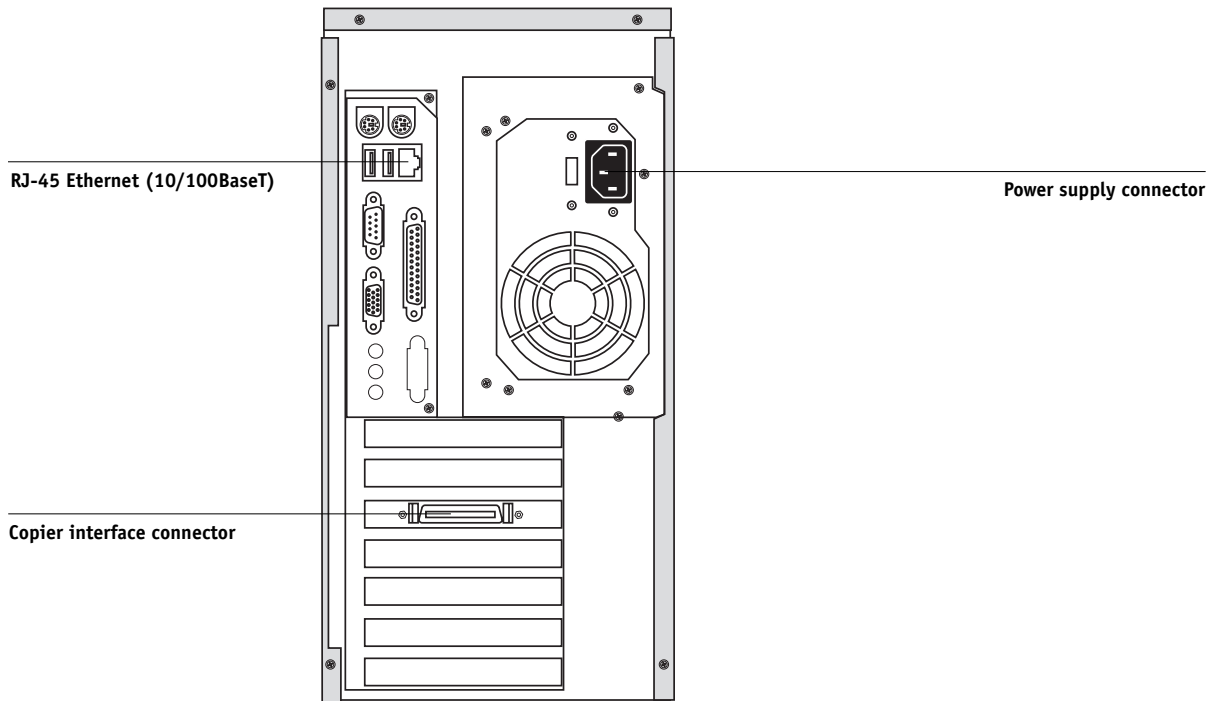


TCP/IP (lpd) protocol

## Connecting network cable to the EB-105EX

In this section, the back panel of the EB-105EX is illustrated, followed by information for connecting to the Ethernet board.

### Back view of the EB-105EX



## Ethernet connection

For Ethernet connections, the EB-105EX supports cabling defined as Category 5 for use with 100BaseT; or as Category 3, Category 4, or Category 5 for use with 10BaseT. The cable uses an 8-pin RJ-45 connector that plugs into the RJ-45 socket on the EB-105EX.

**NOTE:** The 100BaseT type supported by the EB-105EX is 100BaseTX, also known as Fast Ethernet. If an Ethernet hub is used, it must be a 100BaseTX hub. The term “100BaseT” is used to refer to 100BaseTX.

---

### TO CONNECT TO THE ETHERNET BOARD

- **Connect the network cable to the RJ-45 connector on the back of the EB-105EX.**

You must use a Category 5 unshielded twisted pair cable network cable for 100BaseT.





## Chapter 2: Setting Up Network Servers

This chapter describes environments that typically include one or more network servers—Novell NetWare servers and Windows NT 4.0/2000 servers—that share printing to the EB-105EX. It describes setting up servers that use IPX/SPX or TCP/IP protocols for communicating with the EB-105EX. In addition, it includes guidelines for setting up direct communication from Windows NT 4.0/2000/XP workstations or UNIX workstations, where a network server is optional. This chapter also outlines the requirements for users to print to the EB-105EX and run Fiery utilities and Fiery WebTools.

The EB-105EX can accept jobs concurrently from NetWare, Windows NT 4.0/2000, and AppleShare servers, as well as jobs sent directly from Windows NT 4.0/2000/XP or UNIX workstations. Because AppleShare servers require no special configuration, they are not discussed in this chapter, except for use in a Windows NT 4.0/2000 environment (see [“EB-105EX on a TCP/IP network with Windows NT 4.0/2000/XP”](#) in the following section).

If your network is based on Windows NT 4.0/2000, proceed to the following section. For information on UNIX workstations, proceed to [page 2-17](#).

### EB-105EX on a TCP/IP network with Windows NT 4.0/2000/XP

When a Windows NT 4.0/2000/XP workstation is configured to connect to the EB-105EX using TCP/IP, it can print directly to the EB-105EX. If the workstation shares the printer over the network, it is acting as a print server to Windows 9x/Me and Windows NT 4.0/2000/XP clients. Client workstations print to the EB-105EX by printing to the Windows NT 4.0/2000 print server. You can then monitor and control printing at the Windows NT 4.0/2000 server.

Typical system combinations are:

- Print server running Windows NT 4.0/2000 Server; clients running Windows NT 4.0/2000/XP Workstation and Windows 9x/Me
- Print server running Windows NT 4.0/2000/XP Workstation and clients running Windows 9x/Me

With TCP/IP protocols loaded, you can run Fiery utilities and WebTools from a Windows workstation.

### Tips for experts—Windows NT 4.0/2000/XP with TCP/IP

Setting up printing from Windows NT 4.0/2000/XP using TCP/IP protocols is similar to setting up UNIX workstations with TCP/IP. When TCP/IP network connections are established from Windows NT 4.0/2000/XP workstations, note the following:

- **Make sure you have a valid IP address for the EB-105EX and any workstations that will print to it or run the Fiery utilities.**
- **In EB-105EX Setup, enable TCP/IP and enter the IP address, subnet mask, and gateway address for the EB-105EX.**

Enter these addresses manually or use DHCP or BOOTP protocols to assign them dynamically.

- **Make sure the EB-105EX name and address are listed in a domain name server (DNS) or hosts name database used by your system.**
- **Make sure the system host table includes the correct internal name for the EB-105EX as a remote printer.**

For more information, see [page 2-18](#).

- **For Windows NT 4.0/2000/XP, install the appropriate printer driver files (PCL or PostScript) on the Windows NT 4.0/2000 server.**

For more information, see the *User Software Installation Guide*.

- **Repeat the installation for all users who print to the EB-105EX.**

Each server and workstation running the Fiery utilities with TCP/IP also needs the TCP/IP protocol and the Fiery utility software.

## Configuring a Windows NT 4.0/2000 server to communicate with the EB-105EX

To configure a Windows NT 4.0/2000 server to communicate with the EB-105EX, follow these general steps. More detail is provided in subsequent sections in this chapter and in your Microsoft documentation.

- **Load the TCP/IP network protocol on the server and configure it with an IP address, subnet mask, and gateway.**
- **Enter the host name of the EB-105EX in the host database used by your system (see [page 2-4](#)).**
- **Perform EB-105EX Setup.**
- **On the Windows NT 4.0/2000 server, create a printer for each EB-105EX print connection, install the appropriate printer drivers, and (optionally) share the printer on the network (see [page 2-5](#)).**
- **Enter the host name and remote printer name of the EB-105EX in the printer connection. For more information, see [page 2-18](#).**
- **If the Windows NT 4.0/2000 server is also a workstation, install Fiery utilities (see the [User Software Installation Guide](#)).**

### Adding the EB-105EX to the TCP/IP network

If your TCP/IP network consists of Windows NT 4.0/2000 servers and Windows NT 4.0/2000/XP clients, follow the procedures in this section. If the network also includes UNIX workstations, see the procedures on [page 2-18](#).

---

#### TO ADD THE EB-105EX TO A TCP/IP NETWORK WITH A WINDOWS NT 4.0/2000 SERVER

- 1. Register the IP address of the EB-105EX in the host name database used by your system.**

For installations that do not have a network administrator or central host name database, add the EB-105EX to the hosts file on the Windows NT 4.0/2000 server. Also add it to the hosts file on any workstations that have TCP/IP loaded and will use the Fiery utilities.

The Windows NT 4.0/2000 hosts file provides compatibility with the UNIX hosts file. The hosts file is used as a local Domain Name Services (DNS) equivalent. It has the same format as the /etc/hosts file on UNIX servers. The format of the hosts entry is:

IP Address<TAB>host name<TAB>#comments

where <TAB> indicates that you press the Tab key.

To determine the IP address and server name of your system, print a Configuration page (see [page 7-10](#)).

**NOTE:** If the EB-105EX has already been defined in an /etc/hosts file or equivalent host name database on a UNIX workstation on your network, we recommend you use the same host name here as you used for the name of the remote printer in the /etc/printcap file.

- 2. Perform EB-105EX Setup to support TCP/IP printing.**

Enter the options in Protocol Setup (IP address of the EB-105EX, subnet mask, and gateway address).

### **Installing the EB-105EX as a shared printer**

The first step in creating a printer is installing the printer driver files, which give your applications access to printer features. You can use the installation instructions in the *User Software Installation Guide* for every workstation that will print directly and independently to the EB-105EX. However, if you are an administrator running a Windows NT 4.0/2000 server or Windows NT 4.0/2000/XP workstation, you can also create a printer and share it with clients on the network. This allows clients who do not have permission to establish an independent network connection to the EB-105EX to print through the server.

You can specify sharing of the printer during installation of the EB-105EX printer files. If you have not yet installed the EB-105EX printer files on the Windows NT 4.0/2000 print server workstation, do so now, following the instructions in the *User Software Installation Guide*. During installation, enter the information necessary to share the EB-105EX.

If you have already installed the EB-105EX printer files on the workstation you are using as a Windows NT 4.0/2000 print server, see your Windows documentation for information about sharing the EB-105EX.

If more than one EB-105EX print connection is published (for example, if both the Print queue and Hold queue are published), you may want to create a printer for each print connection, so that users can print to each connection directly. When prompted to specify the printer name, enter a name that indicates the EB-105EX print connection.

### **Configuring clients of a Windows NT 4.0/2000 server**

Each client of a Windows NT 4.0/2000 server is already using a network protocol to communicate with the server. Each client can print to the EB-105EX if it has been shared by a Windows NT 4.0/2000 server or Windows NT 4.0/2000/XP workstation. The client does not have to use the same network protocol to connect to the Windows NT 4.0/2000 server as the server uses to communicate with the EB-105EX.

---

**TO CONNECT AND PRINT TO THE EB-105EX SHARED  
BY A WINDOWS NT 4.0 SERVER**

- **Windows 9x/Me: Before printing, double-click the Windows NT 4.0/2000 server icon in the Network Neighborhood window and double-click the printer name.**

You are prompted to set up the printer. When you choose to set it up, the Add Printer Wizard dialog box appears. Follow the procedures in the *User Software Installation Guide*.

- **Windows NT 4.0: Before printing, connect to the print server workstation and select the EB-105EX. Right-click and choose Open.**

When prompted, click Yes to have Windows set up the printer.

- **Windows 2000/XP: Before printing, install the printer driver from the User Software CD and configure the port.**

After clients have selected the printer, they can choose it from the Print Setup, Page Setup, or Print dialog boxes of their applications. Clients can change printing options for their own job, but printer properties appear dimmed, and unavailable for changing. When a client chooses Print, the job is transmitted to the Windows NT 4.0/2000 print server, and from there to the selected print connection on the EB-105EX. The job is listed in the Print Manager on the client workstation, and the administrator can track it in the EB-105EX window in the Print Manager on the Windows NT 4.0/2000 print server.

**Configuring Windows computers without a Windows NT 4.0/2000 server**

If your network does not have a Windows NT 4.0/2000 server, Windows 9x/Me and Windows NT 4.0/2000/XP computers can print to the EB-105EX using Windows, or SMB, printing. In this type of network environment, computers running Windows 9x/Me and Windows NT 4.0/2000/XP computers operate in a peer-to-peer environment and communicate directly with the EB-105EX when users send print jobs.

Many of the prerequisites for setting up printing through a Windows NT 4.0/2000 server also apply to setting up Windows printing where a server is not present. The prerequisites are summarized in the following list. More details are available in your Microsoft documentation.

- **Print a Configuration page (see [page 7-10](#)).**  
Use the information on this page to determine the current EB-105EX settings.
- **Load the TCP/IP network protocol on the computer. (For Windows 9x/Me, load File and printer sharing for Microsoft Network. For Windows 2000/XP, load Client for Microsoft Networks).**
- **Verify the Workgroup name of the computer in the Windows Network control panel.**  
Make sure the Workgroup name is the same as the one listed in EB-105EX Setup.
- **For Windows 9x/Me, in the File and printer sharing for Microsoft Network Properties dialog box, specify Automatic or Enabled for Browse Master, and select Yes for LM Announce.**
- **For Windows 2000/XP, in the Client for Microsoft Networks Properties dialog box, configure the computer to allow file sharing, and then restart the computer.**
- **Ping the EB-105EX to verify TCP/IP communication is successful (see [page 2-19](#)).**

## EB-105EX on a NetWare network

The NetWise™ features built into the EB-105EX support the following network operating environments:

- NetWare—NDS (Novell Directory Services)
- Servers running NetWare in bindery emulation mode

For Ethernet-based networks, the IPX/SPX protocol is supported.

**NOTE:** Setting up a NetWare environment correctly requires the presence and active cooperation of the Novell network administrator. You must have administrator privileges on the network to create new NDS or bindery objects.

The term “bindery server” is used to refer to a Novell file server running NetWare in emulation mode. The term “NDS” is used to describe components of a NetWare operating system running NetWare in native mode.

NetWare clients print to the EB-105EX through the Novell network server. Server setup and client network setup are outlined in this chapter, client printing setup is described in the *User Software Installation Guide*, and printing is described in the *Printing Guide*.

The EB-105EX can receive print jobs from NetWare clients over Ethernet network topologies. During EB-105EX Setup, you select the frame type or types to be used for communication between the EB-105EX and network servers. Frame type refers to the format of a communications packet; frame types are specified in a startup file when the NetWare server (or any other workstation) loads its network drivers.

### Tips for experts—IPX networks

Setting up the EB-105EX is similar to setting up any other PCL or PostScript printer on the network.

The EB-105EX with IPX connections has the following characteristics:

- **A minimum connection to the EB-105EX consists of a NetWare file server, a NetWare print server, and a NetWare queue.**
- **A single directory tree and up to eight bindery servers can be configured simultaneously.**
- **The EB-105EX looks for print jobs on one NetWare print server per bindery server.**
- **Each print server can store jobs for any print connection on the EB-105EX.**



## Overview of IPX printing to the EB-105EX

NetWare file servers support the creation of print queues, which are storage areas for print jobs. When a client on a remote workstation decides to print, the job is directed to a print queue on the NetWare file server and spooled to the NetWare server disk, freeing up the client workstation.

You must assign the NetWare queue names a specific extension that corresponds to the EB-105EX print connection, as follows:

\_print  
\_hold  
\_direct

**NOTE:** These extension names must be in English and in all lowercase letters.

You do not need to rerun Setup when you add or remove a NetWare queue; however, you should restart the EB-105EX after you create or remove a queue.

When the EB-105EX is configured to connect to a NetWare server, it polls the NetWare server for jobs in each of its queues. If jobs are found, they are automatically transferred over the network to the matching connection on the EB-105EX. For example, jobs from the NetWare queue with the \_print extension are sent to the EB-105EX Print queue. While a job is processed and printed, a record of the job is being created. You can access the Job Log containing these records at any time.

## Configuring a NetWare server for printing

The following sections explain how to set up a NetWare file server so networked users can print to the EB-105EX from their workstations, and the EB-105EX can obtain print jobs from the NetWare server.

For *each* NetWare file server that you configure, follow these general steps. More detail is provided in subsequent sections and in your NetWare documentation.

- Make sure the server is connected to a functioning IPX network.
- Log in as the Supervisor on a Windows workstation connected to the NetWare file server.
- For NetWare installations, set up an NDS connection (see [page 2-12](#)).
- For NetWare in emulation mode, set the bindery context (see [page 2-12](#)).
- For NetWare in bindery emulation, set up a file server, print server, and print queue for the EB-105EX (see [page 2-13](#)).

With bindery services, you can route all EB-105EX print jobs through the same NetWare file server or configure more than one file server to handle EB-105EX jobs.

The functions you perform on the Novell server, the EB-105EX, and the client workstation are summarized in the following tables. The first table applies to NDS connections, and the second to bindery connections. Complete the operations in the left column, then the center column, then the right column.

## Configuring an NDS connection

### Abbreviations:

FS = file server

PS = print server

PQ = print queue (on the NetWare server)

On NDS FS	In Setup from Command WorkStation	On client workstation
<b>In NETADMIN:</b> Create NDS PQs Create NDS printer and assign PQs Create PS and assign the printer Configure users of the PQs	<b>Port Setup</b> Ethernet Setup <b>Protocol Setup</b> IPX/SPX Setup—select frame types <b>Service Setup</b> PServer Setup and NDS Setup Select Root Browse to select PS Specify PQ search root (optional) Set Polling Interval	Install user software.  For printing: Connect client to PQs that you set up on the NetWare FS (associated with the PS selected in NDS Setup).  For running Fiery utilities: Configure the connection to the EB-105EX.

## Configuring a bindery connection

On Bindery FS	In Setup from Command WorkStation	On client workstation
<b>In PCONSOLE:</b> Select NetWare FS (up to 8) For each FS: Configure PS Configure PQ Configure users of the PQ	<b>Port Setup</b> Ethernet Setup <b>Protocol Setup</b> IPX/SPX Setup—select frame types <b>Service Setup</b> PServer Setup and Bindery Setup Add FS (up to 8) Set Polling Interval	Install user software.  For printing: Connect client to PQs that you set up on the NetWare FS (associated with the PS selected in Bindery Setup).  For running Fiery utilities: Configure the connection to the EB-105EX.

### Setting up an NDS connection

In NDS, all NetWare entities (objects) are organized in a hierarchical tree structure. Objects have a name, properties, and a context that defines the location of the object in the directory tree. For the EB-105EX, you are mainly concerned with defining a printer, a print server object, and one or more print queue objects. Objects are created in NetWare administrator programs such as PCONSOLE, NETADMIN, or NetWare Administrator.

The top-level tree object is known as the [Root] object. The name of the [Root] object is also the name of the tree. Below the [Root] are other objects: either containers (which consist of other objects) or leaf objects (which do not contain other objects). Access to objects is controlled by rights that are defined as properties of each object. Rights are established by network administrators.

### Setting the NetWare bindery context

You can connect only one directory tree to the EB-105EX. If you need to connect additional NetWare servers, do so by using bindery emulation. You can connect up to eight bindery servers to the EB-105EX.

**NOTE:** The file server you select must not be in the same tree as the one you selected in NDS Setup.

In order to set up the NetWare server in bindery emulation mode for printing to the EB-105EX, the network administrator must do the following:

- Determine the Directory Services path to the container in which the print server and the print queue for the EB-105EX will be created.

The container defines the “bindery context” for your network structure.

- Edit the network startup file to set the bindery context.
- Activate the new bindery context.

### Setting up a NetWare print queue for bindery

For NetWare in emulation mode, the NetWare print server and print queue for the EB-105EX are created and configured from NetWare Print Console (PCONSOLE), a NetWare utility that is stored in the NetWare PUBLIC directory.

As with NDS, you can create several NetWare entities on a Novell server and then select them in Network Setup (see [page 4-17](#)).

### Setting up NetWare Windows clients for printing

Before setting up client workstations for printing, perform Network Setup (see [page 4-9](#)), and verify that the settings reflect the entities you created in the NetWare administrator utilities (see [page 2-9](#)).

**NOTE:** For printing to the EB-105EX, connect all Windows clients to a NetWare server and permit them to connect to the Netware print server or servers on which you defined a NetWare print queue for the EB-105EX.

After the Novell server and the EB-105EX have been set up, client setup consists of:

- Installing the networking protocol, binding it to the network adapter card, and permitting the client to log in to the NetWare file server.

On Windows 9x/Me workstations, loading both the IPX/SPX-compatible protocol and the Client for NetWare Networks from the Network Control Panel.

On Windows NT 4.0/2000/XP workstations, installing Client Services for NetWare. Use the CSNW option in the Control Panel to set printing options and specify a preferred NetWare server.

- Setting up the EB-105EX as a PostScript or PCL printer by installing a PostScript or PCL printer driver and printer description files.
- Adding a network port and connecting the workstation to one or more NetWare queues that have been defined for the EB-105EX.
- Installing EB-105EX software.

For details, see the *User Software Installation Guide*.

## EB-105EX on a NetWare network with NDPS

The EB-105EX supports printing over a NetWare network running either the TCP/IP protocols or the IPX protocol. For pure IP printing, the EB-105EX takes advantage of features in NDPS (Novell Distributed Print Services). For IPX printing, the EB-105EX supports the PServer service in Bindery emulation or through NDS (Novell Directory Services). For more information on IPX-based printing, see [“EB-105EX on a NetWare network”](#) on page 2-7.

**NOTE:** Setting up a NetWare environment correctly requires the presence and active cooperation of the Novell network administrator. You must have administrator privileges on the network to create new NDS or bindery objects.

NDPS is not like earlier queue-based versions of NetWare printing. Instead, you use an NDPS Manager and a Printer Agent, which control the tasks previously handled by a print queue, print server, and spooler. You can also make the printer driver available for clients to download from Windows 9x/Me and Windows NT 4.0/2000/XP workstations.

During EB-105EX Setup, you select the frame type or types to be used for communication between the EB-105EX and network servers. Frame type refers to the format of a communications packet; frame types are specified in a startup file when the NetWare server (or any other workstation) loads its network drivers.

### Tips for experts—NetWare networks

Setting up the EB-105EX in an NDPS environment is similar to setting up any other PostScript printer on the network. When setting up the EB-105EX in such an environment, see the following information:

- **Make sure you have a valid IP address for the EB-105EX and for any workstations that will print to it or run Fiery utilities.**
- **In EB-105EX Setup, enable TCP/IP and enter the IP address, subnet mask, and gateway address for the EB-105EX. You can enter these manually or use DHCP or BOOTP protocols to assign the addresses dynamically.**
- **Bidirectional communication features in NDPS are not supported on the EB-105EX.**

## Configuring a NetWare server for printing

### Before you begin

The following procedure assumes NDPS has been installed during NetWare installation and that a Broker is running on the server. Unless you have manually unloaded the Broker, it loads and runs when you install NDPS. Make sure you are using the latest NetWare service pack and Novell gateway. Finally, create an NDPS Manager. For more information, see your NetWare documentation.

In EB-105EX Setup, make sure you have enabled TCP/IP (see [page 4-12](#)) and LPD printing (see [page 4-17](#)) on the EB-105EX. You can ping the EB-105EX (see [page 2-19](#)) to verify that TCP/IP communication is successful.

### Setting up the EB-105EX printer driver

Create a directory for Windows NT 4.0/2000/XP or a folder for Windows 9x/Me in the NetWare server for NDPS to install the corresponding printer driver files from the User Software CD.

---

#### TO SET UP THE PRINTER DRIVER FOR WINDOWS NT 4.0/2000/XP

1. Log on to the Novell file server as a superuser or Administrator.
2. In the `SYS:ndps\resdir\Prndrv\NT4/2000/XP` directory, create a directory called `Fiery`.
3. From the User Software CD, copy the contents of the `ENGLISH\INSTALRS\PS_DRV\WIN_NT/2000/XP` folder to the `Fiery` directory.

---

#### TO SET UP THE PRINTER DRIVER FOR WINDOWS 9X/ME

1. Log on to the Novell file server as a superuser or Administrator.
2. In the `SYS:ndps\resdir\Prndrv\Win9x/Me` directory, create a folder called `Fiery`.
3. From the User Software CD, copy the contents of the `ENGLISH\INSTALRS\PS_DRV\WIN_9x/Me` folder to the `Fiery` directory.

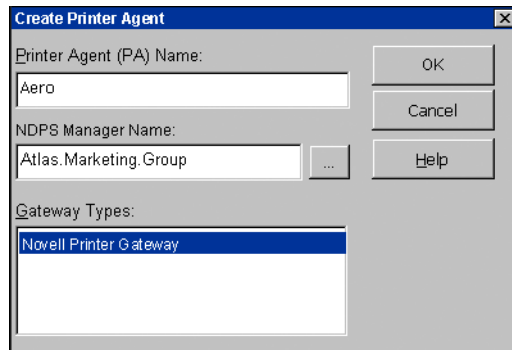
### Setting up the EB-105EX on a NetWare network

Depending on the security needs at your organization, you can set up the EB-105EX as a Public Access printer or a Controlled Access printer. The following procedure describes setting up a Public Access printer. You can then convert the printer to Controlled Access, if necessary. For more information, see your NetWare documentation.

---

#### TO SET UP THE EB-105EX AS A PUBLIC ACCESS PRINTER

1. In NetWare Administrator, double-click the NDPS Manager object you created.
2. In the Details window for the NDPS Manager object, click Printer Agent List.  
The list of Printer Agents appears.
3. Click New.
4. In the Printer Agent (PA) Name field, type a name.



5. Under Gateway Types, select Novell Printer Gateway and click OK.
6. In the Configure Novell PDS for Printer Agent dialog box, select “((NONE))” and click OK.
7. In the Configure Port Handler dialog box, choose “Remote LPR on IP” as the connection type and click Next.



8. **For Host Address, enter the IP address of the EB-105EX.**
9. **For Printer Name, enter the name of the EB-105EX print connection you want users to print to, and click Finish.**

This name must be either print or hold.
10. **In the Select Printer Drivers dialog box, select the printer driver for Windows 9x/Me and the driver for Windows NT 4.0/2000/XP.**
11. **Click Continue, and then click OK.**

## **EB-105EX on a network with UNIX workstations**

When a UNIX workstation is configured with the lpd protocol and connected to the EB-105EX over a TCP/IP network, it can print directly to the EB-105EX.

Setting up UNIX workstations requires an administrator with root privileges. After the initial configuration, UNIX users simply submit print jobs to a named printer.

The job management tools, along with the other Fiery utilities and Fiery WebTools, are unavailable on the UNIX platform. A Windows or Mac OS workstation on the same network as the UNIX workstation that is set up to use TCP/IP for printing to the EB-105EX can use the job management tools to manage print jobs that originate from all workstations on the network.

### **Tips for experts—UNIX workstations**

Setting up the EB-105EX in a UNIX environment has the same requirements as setting up any printer or new device:

- **A distinct IP address is required for the EB-105EX, as well as for each workstation on the network.**
- **A name must be selected for the EB-105EX that goes with the IP address.**
- **The IP address of the EB-105EX must be registered for the network in a host database and on the EB-105EX.**
- **At least one print connection (Print, Hold, or Direct) must be published.**

The following information applies especially to the EB-105EX:

- **The EB-105EX is a printer controller that understands lpd protocols.**
- **The EB-105EX has a remote printer name you must use in order to communicate with it successfully.**

For details, see the following section.

### **Important note about the remote printer name**

Whichever UNIX system you use, the name used for the remote printer (or `rp` in the `/etc/printcap` file) in configuring the EB-105EX must be one of the following:

`print`  
`hold`  
`direct`

The remote printer name is also used when setting up your Windows NT 4.0/2000 Server or Windows NT 4.0/2000/XP Workstation to connect to the EB-105EX over TCP/IP. Enter the remote printer name when you set up your Windows NT 4.0/2000 printer, as the “Name of printer or print queue on that (lpd host) server” in the Add LPR Compatible Printer dialog box.

For the Windows 2000/XP printer driver, enter the remote printer name for Queue Name under LPR Settings in the Configure Standard TCP/IP Port Monitor dialog box.

### **Setting up the EB-105EX on TCP/IP networks**

Every machine (host) on a TCP/IP network, including the EB-105EX, must have a unique 32-bit internet address (IP address). Contact your network administrator to obtain an address for the EB-105EX. Workstations on a TCP/IP network can print directly to the EB-105EX as a remote printer, or can print to a Windows NT 4.0/2000 server or UNIX workstation acting as a print server. Since the EB-105EX spools jobs and acts as a print server, there is no advantage in placing another print server between a workstation and the EB-105EX. If you choose to do so, however, there is no difference in setup, except that a client workstation does not have its own spooling area.

---

**TO SET UP EB-105EX PRINTING ON UNIX SYSTEMS****1. Specify the appropriate settings in EB-105EX Server Setup.**

To access EB-105EX Setup, see [page 4-6](#).

**2. Specify the appropriate settings in EB-105EX Network Setup.**

Enter a valid IP address, subnet mask, and gateway address for the EB-105EX.

**3. Specify the appropriate settings in EB-105EX Printer Setup.**

Publish the Print queue, Hold queue, or Direct connection.

---

**TO SET UP TCP/IP FOR COMMUNICATION WITH THE EB-105EX**

- 1. A superuser (with root login) must add the EB-105EX to the network's IP host table or other system database of network printers.**
- 2. In the file or utility used by your network, specify the remote printer name, the print server protocol, the queue, and the spool file for the EB-105EX name you assigned.**
- 3. Make the EB-105EX available as a printer to other network users.**
- 4. To verify the TCP/IP connection, ping the IP address or the host name. From any workstation on the network, at the command prompt, type:**

```
ping <IP address>
```

Type the EB-105EX IP address assigned in EB-105EX Network Setup.

After the EB-105EX is set up as a network printer, you can also ping the name you gave to the EB-105EX:

```
ping <hostname>
```

The server should respond with a message such as:

```
Reply from <IP address> ...
```

Some systems will respond with a continuous display of output from the IP address. To stop the output, type Control-C. You can use the ping command at any time.

---

## TO PRINT TO THE EB-105EX

- On a UNIX system running SunOS 4.x or other BSD-based variant, use the `lpr` command to send a job to the EB-105EX.
- On a UNIX system running Solaris 2.x or any System V implementation of UNIX, use the `lp` command to send a job to the EB-105EX.
- Windows NT 4.0/2000/XP users with the TCP/IP protocol loaded can send print jobs to the EB-105EX from their applications or from a command prompt.

When Windows NT 4.0/2000/XP users print from applications, they can set print options with the driver but not from the UNIX command line.

## Managing print jobs

UNIX network administrators can use UNIX utilities for viewing the list of jobs, and for printing and removing jobs that are spooled on UNIX servers. If the network includes a Windows NT 4.0/2000/XP workstation that has TCP/IP protocols loaded, you can use Command WorkStation or Fiery Downloader to download fonts and files.

The job management tools also allow you to manage jobs from remote workstations. For more information, see the *Job Management Guide*.

Even without the Command WorkStation or Fiery utilities, you can:

- Set up the EB-105EX to print a log of printed jobs automatically after every 55 jobs (see Job Log Setup on [page 4-40](#)).
- Print a Job Log manually at any time from the Command WorkStation Functions menu (see the *Job Management Guide*).

## Chapter 3: Preparing for EB-105EX Setup

To prepare for printing at your site, you must do some initial EB-105EX configuration, or Setup, to specify the network environment and the kind of printing you do. Before you perform Setup, you must decide the levels of access you will implement for your site. Administrators and operators must also understand how EB-105EX system software is structured in order to configure and use the EB-105EX system correctly.

### Levels of access and control

When you configure the EB-105EX during Setup, you (as system administrator) implement a particular level of control by enabling or disabling print connections, passwords, and access to Fiery WebTools. The level of control you implement can range from minimum to moderate to maximum—or none at all.

- Minimum control might be appropriate for a small site where anyone on the local network can control all printing and EB-105EX functions. Although there may be an administrator or operator charged with certain duties, all users have equal access to the system and job management tools.
- Maximum control might be appropriate for a high-volume printing environment where an administrator or operator controls the job flow and all printing; jobs sent by users are spooled (stored) to the EB-105EX disk until the operator decides it is time to print them. In addition, only the administrator and operator have access to job management tools. This is the recommended level of control.

**NOTE:** The term “job management tools” is used in this manual to refer to Command WorkStation, Fiery Spooler™, and Fiery WebSpooler™.

### EB-105EX print connections

The EB-105EX supports three print connections: Hold queue, Print queue, and Direct connection. These print connections can be enabled, or “published,” to users on the network when you configure Printer Setup. All published connections are constantly checked for the presence of jobs. The Print queue and Direct connection give remote users more direct access to the EB-105EX than the Hold queue. Do not publish the Print queue and the Direct connection in environments where maximum control is desired.

In addition, you can enable the Printed queue, which is a storage area for the most recent jobs from the Print queue. The Printed queue makes it convenient to reprint those jobs. In Setup, you can enable the Printed queue and specify the maximum number of jobs retained in the queue (see [page 4-8](#)). Reprinting jobs in the Printed queue requires the job management tools.

To use the Fiery utilities and WebTools, you must enable at least one print connection.

### Hold queue

Jobs sent to the Hold queue are spooled to the EB-105EX hard disk for printing at a later time or for reprinting. Because the Hold queue is a storage area, jobs sent to it cannot proceed through the printing process until the operator intervenes using the job management tools (see the *Job Management Guide*).

### Print queue

This is the standard EB-105EX queue. Jobs sent to the Print queue are processed and printed in the order in which they are received. Jobs prioritized by an operator with the job management tools and jobs sent via the Direct connection take priority over jobs sent to the Print queue.

### Direct connection

The Direct connection transmits jobs directly to the EB-105EX, but only when the EB-105EX is Idle. If the EB-105EX is busy, the job remains at the user workstation until the EB-105EX is ready. The job is processed as soon as the previous job is finished and before the next queued job is processed.

Jobs sent to the Direct connection are not stored on the EB-105EX hard disk, and cannot be selected for reprinting, moving, or deletion. The Direct connection provides a measure of security for sensitive files. Jobs sent to the Direct connection *do* appear in the Job Log, for management purposes.

**NOTE:** To download fonts to the EB-105EX, you must publish the Direct connection.

## Passwords

Implement passwords as a means of controlling access to EB-105EX functions. The EB-105EX allows you to set the following passwords in Setup:

- Administrator—remotely from Command WorkStation, or locally from the copier operation panel
- Operator—from Command WorkStation

**NOTE:** By default, *no* passwords are set on the EB-105EX. If you do not specifically set passwords, all users have administrator privileges, which include access to important functions such as Setup (including setting passwords) and job control. We *strongly recommend* that you set *at least* an Administrator password to protect the EB-105EX from random or accidental changes to Setup.

## Administrator privileges

Administrator control, which confers control of Setup, is the highest level of control, since the person who has access to Setup can control the printing and job management environment. Administrator privileges include publishing print connections, setting passwords, deleting fonts, controlling print jobs from the job management tools, overriding job settings, clearing the EB-105EX of all job data, and setting default values for print options.

When performing a function from the EB-105EX copier operation panel that prompts you for the Administrator password, you must enter it promptly. Otherwise, the EB-105EX copier operation panel returns to Idle, and you must start over again.

## Operator privileges

Operator control includes control of print jobs from the job management tools, including the ability to override job settings.

## Guest privileges (no password)

No password is needed for a user to log in as a Guest from the job management tools. A Guest can view the status of active jobs but cannot make changes to jobs or to the EB-105EX state.

## Fiery WebTools

The EB-105EX supports Internet or intranet access with Fiery WebTools from Windows and Mac OS computers. To enable the use of Fiery WebTools, do the following in Setup:

- Enable TCP/IP.
- Set an IP address, subnet mask, and gateway address for the EB-105EX.
- Enable Web Services.

For more information, see [Chapter 6](#).

You can set passwords to control access to Fiery WebTools features. If you do not specifically set these passwords, all users have access to all Fiery WebTools functions (see [page 3-3](#)). Fiery WebTools include Status, WebSpooler, WebLink, WebScan™, WebDownloader™, WebSetup™, and Installer™.

### Status

The Status WebTool provides you with current information on the jobs processing and printing on the EB-105EX. It is not affected by passwords. For more information, see the [Printing Guide](#).

### WebSpooler

The WebSpooler interface is very similar to that of Command WorkStation. It allows remote users to preview, manipulate, reorder, reprint, and delete jobs currently spooling, processing, or printing on the EB-105EX. It also allows the administrator and operator to edit and merge jobs (Thumbnails A and B) and view, print, or delete the Job Log.

You control WebSpooler access by setting an Operator password in Setup. If you set a password, only users with that password can manipulate jobs from WebSpooler. A user who does not have the password can still log in to WebSpooler as a Guest with view-only access (see [page 3-3](#)). For more information, see the [Job Management Guide](#).



### WebLink

WebLink provides all users with a link to an address on the Internet. To change the WebLink Internet address, see [page 6-3](#). This function requires the Administrator password, if one has been set (see “[Passwords](#)” on page 3-3).

**NOTE:** If you do not set the Administrator password, any user can change the WebLink address, which affects all users. For this reason, we *strongly recommend* that you set an Administrator password.

### WebScan

With WebScan, you can retrieve scanned documents from a computer on the Internet or your organization’s intranet. It is not affected by passwords. For more information, see the [Printing Guide](#).

### WebDownloader

WebDownloader allows you to print PostScript, EPS, PDF, and TIFF files directly to the EB-105EX without first opening the file in an application. It is not affected by passwords.

### WebSetup

WebSetup allows you to view and modify EB-105EX Setup options from a remote workstation. This function requires an Administrator password. For more information, see [Chapter 5](#).

**NOTE:** WebSetup is supported on Windows computers only.

### Installer

The Installer WebTool allows users to download installers for printer drivers directly from the EB-105EX. It is not affected by passwords. For more information, see the [User Software Installation Guide](#).

## Control level scenarios

Typical scenarios of access and control, ranging from minimum control to maximum control, are described in this section. Choose the scenario that best matches your site requirements, and refer to the corresponding number in the following table for guidance on configuring your system for those requirements.

**NOTE:** We *strongly recommend* that you set *at least* an Administrator password to prevent unauthorized changes to system settings.

**1. No designated administrator or operator (Minimum control—*not recommended*)**

All users have equal access to all system functions including Setup, clearing the EB-105EX, deleting printer fonts, setting the WebLink address, printing to all EB-105EX print connections, and managing all jobs from the job management tools.

**2. An administrator but no operator**

Only an administrator can perform Setup and other administrator functions, but all other system functions are accessible to all users, including printing to all EB-105EX print connections, and managing all jobs from the job management tools.

**3. An administrator and an operator**

Only an administrator can perform Setup and other administrator functions, and only an operator or administrator can control jobs from the job management tools. Users can print to all EB-105EX print connections.

**4. An administrator and an operator; no WebTool access**

Only an administrator can perform Setup and other administrator functions, and only an operator or administrator can control jobs from the job management tools; users can print to the Hold queue and Print queue, but not to the Direct connection; the operator controls all job flow, but jobs sent to the Print queue may not require operator intervention; no access to Fiery WebTools.

**5. An administrator and an operator; operator controls all jobs; no WebTool access (Maximum control)**

Only an administrator can perform Setup and other administrator functions, and only an operator or administrator can control jobs from the job management tools; users can print only to the Hold queue; the administrator and the operator have complete control of job flow; no access to Fiery WebTools.

Use these settings in Setup	1 (Minimum)	2	3	4	5 (Maximum)
Enable Direct connection	✓	✓	✓		
Enable Print queue	✓	✓	✓	✓	
Enable Web Services	✓	✓	✓		
Set an Administrator password ( <i>strongly recommended</i> )		✓	✓	✓	✓
Set an Operator password			✓	✓	✓

## About Setup

Setup configures the EB-105EX to communicate with other devices and manage print jobs. You must perform Setup the first time you turn on the EB-105EX after new system software is loaded, or any time Server software is reinstalled. An initial Setup using default settings is adequate for allowing users to print to the EB-105EX and use Fiery WebTools. When your network or user printing environment changes, you can change Setup options accordingly.

The first time you perform Setup, you must use the copier operation panel. Configure, at a minimum, Server Setup, Network Setup, and Printer Setup, in that sequence. After the initial Setup, you can change Setup options from the copier operation panel (see [page 4-3](#)) or Command WorkStation. Most Setup options can be set using any of these methods.

If you do not configure the remaining Setups, the EB-105EX uses default settings. You must make settings appropriate for the printing environment at your site.

## Network server Setup requirements

For Novell and Windows NT 4.0/2000 (using TCP/IP) networks, you must configure the network servers for printing to the EB-105EX *before* you configure EB-105EX network settings in Setup. For chapter references to information about network server Setup, see the diagrams in [Chapter 1](#).

To configure network settings in Setup, you must have a live network connection, so that the EB-105EX can query the network for zones, servers, and server-based queues.

Whenever the configuration of the EB-105EX, the copier, or the network changes at your site, you can alter settings to correspond to the changed environment. Changing network or port settings may require that you make changes to other Setup options, as well.

**NOTE:** You must configure the EB-105EX with the correct Windows NT/2000 domain name. This is especially important for Windows printing, also known as SMB printing.

**NOTE:** The EB-105EX does not support the Windows 2000 Active Directory Service. When you use the EB-105EX in a Windows 2000 server environment, assign the EB-105EX to a domain or workgroup.

## Ensuring the copier connection

Complete the following steps *before* you configure the EB-105EX and the computers that will print to the EB-105EX. A service technician will have performed some initial installation.

---

**TO PREPARE FOR EB-105EX CONFIGURATION**

1. **Print a copier Test Page to verify the copier is functioning normally.**
2. **Turn off the copier and connect the interface cable from the copier to the EB-105EX.**
3. **To confirm this connection, turn on the copier and the EB-105EX, and print a Test Page from the copier operation panel.**

To print a Test Page, press the Menu/Cancel button on the copier operation panel Touch Panel to display the Functions menu. Choose Print Pages, and then choose Test Page.

4. **Turn off the copier and connect the network cable to the EB-105EX, as described in Chapter 1.**

The network should already be installed and operational.

5. **Turn on the copier, and then turn on the EB-105EX.**

Proceed to EB-105EX Setup, described in Chapter 4.



# 4

## 4-1 EB-105EX Setup from the copier operation panel

### Chapter 4: Performing Setup from the Copier Operation Panel

Setup is required the first time the EB-105EX is turned on after new system software is loaded. In this initial Setup, you (or the service technician who loads the software) choose a language for the copier operation panel menus and messages. If you do not configure a particular Setup option, the EB-105EX uses default settings. Make sure the settings are appropriate for your printing environment.

### EB-105EX Setup from the copier operation panel

Setup performed from the copier operation panel allows you to configure the EB-105EX to communicate with other devices and manage the print jobs sent to it.

Setup provides the following groups of options:

- Server Setup to specify system options
- Network Setup to specify all the active network systems that transmit print jobs to the EB-105EX
- Printer Setup to specify how print jobs and queues are managed
- PS Setup to specify PostScript settings
- PCL Setup to specify PCL settings
- Job Log Setup to specify how the EB-105EX handles its log of printed jobs

In addition, the Change Password, Clear Server, and Factory Defaults options are available from the main Setup menu. The Change Password option in the Setup menu allows you to create and change the Administrator password on the EB-105EX. For more information, see [“Setting passwords”](#) on page 7-2. For information on Clear Server, see [“Clearing the EB-105EX”](#) on page 7-5, and for information on Factory Defaults, see [“Restoring the EB-105EX to factory defaults”](#) on page 7-7.

# 4

## 4-2 Performing Setup from the Copier Operation Panel

The copier operation panel allows you to set options and view information about jobs printed to the EB-105EX. It comprises the following parts:

- Touch Panel—displays status information and options for setting up the EB-105EX.
- Document Server button—allows you to access the Document Server feature. For more information, see the *Printing Guide* and *Operating Instruction Copy Reference* manual.
- Printer button—allows you to access the EB-105EX.
- Up and down arrow buttons—allow you to scroll menus, options, and settings.
- Menu/Cancel button—allows you to cancel without saving changes; also toggles to the Functions menu.

### Copier operation panel

Touch Panel

Up and down arrow buttons

Menu/Cancel button

Document Server button

Printer button



## Copier operation panel

Use the copier operation panel to view status information, print special pages, and set up printing. While most elements in the copier operation panel Touch Panel have counterparts in Command WorkStation, you can view current functions on the copier operation panel when Command WorkStation is not connected to the server or is not running.

### Buttons

Up and down arrow buttons	Use these buttons to scroll to different screens in multi-screen lists, select Setup options from a list of available options, and scroll through alphanumeric characters.
Menu/Cancel button	Press this button to view other screens. Under normal operation, the copier operation panel displays the Info, RIP, or Print Status screen with information about the status of the EB-105EX. If you press the Menu/Cancel button, the Functions menu appears and you can perform additional operations (see <a href="#">page 4-4</a> ). If a job is processing or printing, press the Menu/Cancel button to cycle through the active screens.

## Functions menu

The Functions menu provides many of the options available from Command WorkStation. From this menu, choose the following options:

### Print Pages

Print special pages from the EB-105EX. You can print the following pages from the submenu that appears:

**PS Test Page/PCL Test Page**—A Test Page allows you to confirm that the EB-105EX is properly connected to the copier. The settings on the Test Page may include: Server Name, Printer Model, date and time the Test Page was printed.

**Configuration**—Prints the Configuration page, which provides the current server and device configuration. This page lists general information about the EB-105EX hardware and software configuration, the current options for all Setup settings, and the Ethernet addresses of the EB-105EX.

**Job Log**—Prints a log of the last 55 jobs. For information about the fields in the Job Log and printing it in other forms, see the *Job Management Guide*.

**PS Font List/PCL Font List**—Prints a list of all fonts currently on the EB-105EX hard disk.

**E-mail Log**—Prints an E-mail Log of recent e-mail activity.

**FTP Log**—Prints an FTP Log of recent FTP activity.

**NOTE:** To print an E-mail or FTP Log, you must enable E-mail Service or FTP Service.

### Scan Job

Scan a document placed on the copier glass or document feeder. For more information on this option, see the *Printing Guide*.

# 4

## 4-5 Copier operation panel

Suspend Printing	Suspend communication between the EB-105EX and the copier. You <i>must</i> suspend printing to interrupt the current EB-105EX job and use the copier for making copies or printing another job. Jobs continue to process on the EB-105EX. After you make the copies, choose Resume Printing to continue printing jobs from the EB-105EX.
Resume Printing	Resume communication between the copier and the EB-105EX after you have finished making copies or printing other jobs.
Shut Down	<p>Shut down all EB-105EX activity in the correct manner and then restart. Use this option instead of the power switch on the back of the EB-105EX. The following options are available from the submenu that appears:</p> <p>Restart Server—Restarts the server without shutting down the EB-105EX hard disk.</p> <p>Shut Down System—Shuts down the EB-105EX hard disk.</p> <p>Reboot System—Restarts the system after shutting down the EB-105EX hard disk.</p>
Run Setup	Access the Setup menu and change Setup option settings.

## Accessing Setup options

### TO ACCESS SETUP WHEN THE EB-105EX IS IDLE

1. **Make sure the copier operation panel Touch Panel reads Idle.**

If Printing or RiPPing appears, the EB-105EX is processing, and you must wait until the system finishes and reaches the Idle state.

2. **Press Menu/Cancel on the copier operation panel Touch Panel.**

3. **Use the down arrow button to scroll to Run Setup.**

4. **Press OK in the Touch Panel.**

At the main Setup menu, press the button for the Setup you want to access.

For first-time Setup, you must perform the following Setups, in this order: Server Setup, Network Setup, Printer Setup. After performing these Setups, you can continue with the remaining Setups, or exit Setup and save your changes.

## About the copier operation panel Setup interface

When you perform Setup from the copier operation panel, you select one menu after another and enter information about your EB-105EX and your network and printing environment.

## Types of Setup screens

Two types of Setup options are available:

### **Multiple choice questions**

You are given choices that appear as buttons on the Touch Panel. To make another selection, press the button for the desired option on the Touch Panel.

After displaying your desired option, press OK.

### **Information entry options**

You must specify the information for your site (the printer name or IP address). Use the up and down arrow buttons to scroll through the alphanumeric symbols to make your selection.

# 4

## 4-7 Server Setup options

When you have entered the settings, you must save the changes. You are usually prompted to do so. If you choose Yes, your settings overwrite previous settings. If you choose No, your previous settings are retained. If necessary, the EB-105EX restarts after you exit the Setup menu.

### Server Setup options

The Server Setup menu lets you specify system information that pertains to the EB-105EX and all users. To access the menu, follow the instructions on [page 4-6](#).

When you choose Server Setup, the options appear in sequence, as follows. Default values, where applicable, appear in square brackets. *Words shown in italics* indicate that a product- or site-specific value is displayed.

#### **Server Name**

***Default server name***

Enter a name for the EB-105EX (up to 15 characters long). This name appears in the Chooser on an AppleTalk network.

#### **Print Start Page**

**Yes/No [No]**

Specify whether the EB-105EX should print a start page every time it restarts. The start page displays information about the EB-105EX, including the server name, current date and time, amount of memory installed in the EB-105EX, network protocols enabled, and connections published.

#### **Use Character Set**

**Macintosh/DOS/Windows [Windows]**

Specify whether the copier operation panel and Command WorkStation should use the Macintosh, DOS, or Windows character set for displaying file names. This is important if file names include accented or composite characters (such as é or æ).

For mixed-platform networks, choose the option that gives the best overall representation of the special characters you use.

# 4

## 4-8 Performing Setup from the Copier Operation Panel

### **Enable Printing Groups**

**Yes/No [Yes]**

Specify whether to enable printer groups for Member Printing. If you enable this option, you must use Command WorkStation to define user groups and passwords. Users must then enter their group name and password when they print.

### **Enable Printed Queue**

**Yes/No [Yes]**

Specify whether to enable the Printed queue, which creates a storage location on the EB-105EX hard disk for recent jobs that were printed from the Print queue. Users with Administrator or Operator access to the job management tools can reprint jobs from the Printed queue without resending them to the EB-105EX. If you select No, jobs are deleted from the EB-105EX hard disk immediately after they are printed.

### **Jobs Saved in Printed Queue**

**1-99 [10]**

This option appears only if Enable Printed Queue is set to Yes. Specify the number of jobs to be stored in the Printed queue. Jobs in the Printed queue take up space on the EB-105EX hard disk. If disk space is low, use a smaller value for saved jobs.

### **Clear Each Scan Job**

**After 1 day/Manually/After 1 week [After 1 day]**

Specify how you want to remove scanned data from the hard disk. If you select Manually, the scanned data remains on the hard disk until specifically deleted, or until all scanned jobs are cleared by the Administrator.

### **Clear Each Scan Job Now**

**Yes/No [No]**

Specify whether to clear scan jobs now.

### **Save Changes**

**Yes/No [Yes]**

Select Yes to activate any changes made in the Server Setup; select No to return to the main Setup menu without making any changes.

## Network Setup options

When you perform Network Setup, you configure the EB-105EX to receive print jobs over the network systems that are used at your site.

Choose Network Setup from the Setup menu to specify network addresses and names to be used by workstations, servers, and the EB-105EX when they communicate with each other.

The Network Setup menu includes three submenus that allow you to choose port types, protocols, and network services. You must perform Port Setup and enable at least one port.

For each item you enable, you are prompted to enter settings for that item. Default values, where applicable, appear in this manual with square brackets.

Display and select options only for the network systems that are currently used at your site. If your network requirements change, you can change Network Setup at any time.

If the EB-105EX is configured to enable more than one protocol, it automatically switches to the correct protocol when it receives a print job.

The available network types, and the Setup areas that pertain to them, are summarized in the following table.

For this Network or Connection Type	Use this Port Setup	Use this Protocol Setup	Use this Service Setup
AppleTalk over Ethernet	Ethernet Setup	AppleTalk Setup	AppleTalk printing (PAP) is enabled automatically.
TCP/IP over Ethernet	Ethernet Setup	TCP/IP Setup: Ethernet Setup	LPD Setup Web Services Setup Windows Setup Port 9100 Setup IPP Setup (Windows 9x/Me/2000/XP)
IPX/SPX over Ethernet	Ethernet Setup	IPX/SPX Setup	PServer Setup (NDS, Bindery, or both)

# 4

## 4-10 Performing Setup from the Copier Operation Panel

### TO ACCESS NETWORK SETUP OPTIONS

1. **Confirm that the network cable is connected to the EB-105EX.**

During Network Setup, the EB-105EX queries the network for zones, servers, and server-based queues. If you perform Network Setup without a connected and functioning network, default settings are used that may not meet your needs.

2. **Choose Network Setup from the main Setup menu.**
3. **Choose Port Setup.**
4. **To use Ethernet, choose Ethernet Setup, and enter the appropriate settings.**
5. **When you have finished entering port settings, choose Exit Port Setup, and then choose Protocol Setup.**
6. **Enter the appropriate settings for the protocol or protocols you use.**
7. **When you have finished entering protocol settings, choose Exit Protocol Setup, and then choose Service Setup.**
8. **Enter the appropriate settings for the services you use.**

The Network Setup options are described in detail in the following pages.

### TO EXIT NETWORK SETUP

1. **When you have finished entering service settings, choose Exit Network Setup.**
2. **Choose Yes when prompted to save changes.**
3. **From the main Setup menu, choose another Setup or choose Exit Setup.**



Network Setup  
Port Setup

## Port Setup options

### Ethernet Setup

#### Enable Ethernet Yes/No [Yes]

Select Yes if you have Ethernet cabling connected to the EB-105EX.

#### Ethernet Speed Auto Detect/100 Mbps/10 Mbps [Auto Detect]

Select Auto Detect if your network environment is mixed or if you do not know the network speed. If you know the speed of the network to which the EB-105EX is attached (10 Mbps or 100 Mbps), select it.

## Protocol Setup options

To configure the EB-105EX, choose each protocol and enter the settings for that protocol. You can enable AppleTalk, TCP/IP, and IPX/SPX communication simultaneously.

Network Setup  
Protocol Setup

### AppleTalk Setup

#### Enable AppleTalk Yes/No [Yes]

Select Yes if you make the EB-105EX available on an AppleTalk network.  
This setting enables the EB-105EX to communicate over AppleTalk networks.

#### AppleTalk Zone *List of zones*

The EB-105EX searches the network for AppleTalk zones in your network segment. Scroll through the list to select the AppleTalk zone in which you want the EB-105EX to appear. If your segment has only one zone, the EB-105EX is assigned to that zone automatically.

The message “No AppleTalk zone found” may mean your network has no zones, or the network cable is not connected (see [Appendix A](#)). Choose OK to dismiss the message.

### TCP/IP Setup options

To configure the EB-105EX for TCP/IP, choose TCP/IP Setup.

Choose Ethernet Setup and enter the appropriate settings. Choose each network type you use (Ethernet) and enter the appropriate settings.

When you set an IP address, subnet mask, or gateway address for the EB-105EX during Setup, you can allow the EB-105EX to get these addresses automatically from a DHCP or BOOTP server. Turn on or restart the EB-105EX and allow it to reach Idle. Make sure the DHCP or BOOTP server is running, and then perform EB-105EX Setup.

### TCP/IP Setup with Ethernet

Network Setup  
Protocol Setup  
TCP/IP Setup

#### Ethernet Setup

##### Enable TCP/IP for Ethernet

Yes/No [Yes]

Select Yes if you make the EB-105EX available on a TCP/IP network over Ethernet cabling.

**NOTE:** If you are using TCP/IP for printing from Windows computers, enabling TCP/IP here also enables you to use Fiery utilities from Windows computers using TCP/IP protocols.

##### Enable Auto IP Configuration

Yes/No [Yes]

Select Yes to allow the EB-105EX to obtain its Ethernet IP address by searching the network. Depending on your network and the protocol you select in the following option (DHCP or BOOTP), the IP address can change. Select No to assign the EB-105EX a static IP address. If you select No, you proceed to the IP Address option, where you manually set the IP address.

**Select protocol**  
**DHCP/BOOTP [DHCP]**

This option appears only if you answered Yes to Enable Auto IP Configuration. Select the protocol over which the EB-105EX should search for its IP address. Both DHCP and BOOTP allow the EB-105EX to obtain the Ethernet IP address and Subnet Mask automatically.

Depending on your network, the EB-105EX may be assigned a different address after you restart the EB-105EX. With DHCP selected, the EB-105EX can be assigned a different address even if it is not restarted. Make sure the network is already configured properly for the protocol you select.

**Get Gateway Address Automatically**  
**Yes/No [Yes]**

This option appears only if you answered Yes to Enable Auto IP Configuration. This option allows you to automatically assign the gateway address for printing with TCP/IP.

**IP Address**  
**[127.0.0.1]**

This option appears only if you answered No to Enable Auto IP Configuration. Enter the EB-105EX IP address for Ethernet. This IP address, unlike an IP address set automatically, remains the same if you restart the EB-105EX. You must change the default to a valid address for your network. For information about setting up printing with TCP/IP, see [Chapter 2](#).

**Subnet Mask**  
**[255.255.255.0]**

This option appears only if you answered No to Enable Auto IP Configuration. This option allows you to modify the subnet mask for printing with TCP/IP over Ethernet. To set the subnet mask, enter one of the following values:

- 255.0.0.0 if the IP address starts with a number less than 128
- 255.255.0.0 if the IP address starts with a number from 128 through 191
- 255.255.255.0 if the IP address starts with a number greater than 191

**NOTE:** Confirm the subnet mask setting with your network administrator before proceeding. In some cases, the required setting may be different from that listed.

# 4

## 4-14 Performing Setup from the Copier Operation Panel

### Gateway Address [127.0.0.1]

This option appears only if you answered No to Get Gateway Address Automatically or No to Enable Auto IP Configuration.

Use this option to set the gateway address for printing with TCP/IP. If your network uses a gateway, you must change the default to a correct gateway address for your network.

### DNS Setup

Network Setup  
  Protocol Setup  
    TCP/IP Setup  
      DNS Setup

### DNS Setup

#### Enable DNS Yes/No [No]

Select Yes to allow the EB-105EX to use the EB-105EX features and resolve a name to an IP address.

#### Get DNS Address Automatically Yes/No [No]

Select Yes to allow the EB-105EX to resolve a name to an IP address automatically.

#### Primary DNS Server IP Address [255.255.255.255]

This option appears only if you selected No to Get DNS Address Automatically. Specify the IP address of the primary DNS server.

#### Secondary DNS Server IP Address [0.0.0.0]

Specify the IP address of the secondary DNS server.

**Domain Name**

Enter the DNS domain name.

**Host Name*****Default Name***

Enter the DNS host name of the EB-105EX. The default name is the same as the server name assigned in Server Setup (see [page 4-7](#)).

**IPX/SPX Setup options**

To specify the frame types the EB-105EX uses for IPX/SPX protocols, choose IPX/SPX Setup from the Protocol Setup menu. You must choose at least one frame type to enable IPX/SPX protocols. The EB-105EX supports the following frame types for IPX/SPX:

- For Ethernet—Ethernet 802.2, Ethernet 802.3, Ethernet II, and Ethernet SNAP

For protocols other than IPX/SPX, the frame type is automatically enabled and does not require Setup, as follows:

With this protocol	And these printing services	This frame type is automatically enabled
AppleTalk	PAP (Printer Access Protocol)	Ethernet SNAP
TCP/IP with Ethernet	LPD (Line Printer Daemon)	Ethernet II

### Select Frame Types

#### Enable IPX Auto Frame Type

Yes/No [No]

Specify whether the EB-105EX should try to bind to all available frame types automatically. The EB-105EX does so whether or not all frame types are appropriate. To determine the frame types that were successfully bound, save your changes, exit Setup, restart the EB-105EX, and print a Configuration page. The Configuration page lists only one of the frame types that were successfully bound.

If you answer No to this option, you can select frame types manually. You must choose at least one frame type to enable IPX/SPX protocols.

The frame selection screen allows you to make multiple selections. Depending on your Port Setup selection, only Ethernet frame types or all frame types are displayed.

Press the line selection button beside each frame type used on your IPX/SPX network, and then press OK. An asterisk (\*) appears beside each selected frame type. Press the button again to cancel a selected frame type. Use the up and down arrow buttons to scroll to additional frame types. The EB-105EX binds to each frame type as you select it.

When you have selected all the frame types used, choose Exit IPX/SPX Setup.

### Clear Frame Types

To clear all frame types at once, choose Exit IPX/SPX Setup>IPX/SPX Setup>Clear Frame Types.

#### Clear All IPX/SPX Frame Types

Yes/No [No]

To clear all frame types at once, choose Yes.

## Service Setup options

PServer is a program in the EB-105EX software that services the Novell print queues assigned to the Novell print servers set up for printing to the EB-105EX. When you choose PServer Setup and enable PServer, you can set up NDS (Novell Directory Services), Bindery Services, or both. NDS is used with NetWare; Bindery Services are used with NetWare in bindery emulation mode.

### LPD Setup options

Network Setup  
Service Setup  
LPD Setup

#### Enable LPD Yes/No [Yes]

Select Yes to allow lpd printing. For more information, see [“Setting up the EB-105EX on TCP/IP networks”](#) on page 2-18.

### PServer Setup options

Network Setup  
Service Setup  
PServer Setup

#### Enable PServer Yes/No [No]

Select Yes if you connected the EB-105EX to a Novell network.

Choose NDS Setup if your network uses NetWare in native mode. Choose Bindery Setup if your network uses NetWare in bindery emulation mode.

If your network uses *both* NDS and Bindery, set up NDS first. If you set up NDS after Bindery, you will overwrite Bindery Setup.

If your network uses both NDS and Bindery, and uses NetWare servers in bindery emulation, note that the EB-105EX cannot service NDS and bindery emulation servers on the same NDS tree.

# 4

## 4-18 Performing Setup from the Copier Operation Panel

Network Setup  
Service Setup  
PServer Setup

### NDS Setup

Before entering NDS settings, make sure that the EB-105EX is connected to the network and that you have configured an NDS directory tree with a Printer, Print Server, and one or more Print Queue objects for EB-105EX jobs (see [page 2-13](#)). To perform NDS Setup, you may need permission to browse the NDS tree. If access to the Print Server is restricted, you need a login password.

The main objective of NDS Setup is to specify the Print Server object. In addition, you can indicate the location of the EB-105EX print queues.

**NOTE:** The terms NetWare server, Novell server, and IPX server are in common use and are used here interchangeably to mean the server on an IPX network running Novell NetWare networking software.

#### Enable NDS

##### Yes/No [No]

Select Yes if the NetWare servers you use to print to the EB-105EX are running NetWare in Native mode.

#### Select NDS Tree

##### List of trees

Use the up and down arrow buttons to browse through the list of NDS trees available to the EB-105EX. Choose OK when you have displayed the tree that contains the Printer, Print Server, and Print Queue objects you previously defined for the EB-105EX.

Your new NDS tree selection automatically overwrites any previous tree selection. If you change the NDS tree selection and there are also current Bindery settings, you are alerted that they will be deleted. If you continue with NDS Setup, you can replace Bindery settings later. If you do not want to continue, press Menu/Cancel to exit NDS Setup.



**Is user login needed to browse NDS tree?****Yes/No [No]**

Select No if no password is required to browse the tree. You can proceed to navigate to the Print Server object.

Select Yes if network permissions require that you log in to browse the NDS tree and see the Print Server object you want to select. If you select Yes, you are prompted to navigate to the User Login object.

**Navigate the NDS tree to User Login object.**

This message is displayed if you selected Yes for the previous option. Choose OK and browse the NDS tree, as described in the following paragraphs.

***NDS Tree name******Object list, “..”***

Browsing to find the User Login object begins with the NDS tree that you selected previously (with Select NDS Tree). Use the up and down arrow buttons to scroll through a list of objects in the tree beneath the [Root] in the hierarchy, or use the navigation symbol “..” to go up one level at a time.

In each subsequent browse screen, the top line represents your current location. The second line contains:

- A list of objects in the current container directly below your current location

The symbol “..” to go up one level

With an object selected, choose OK to travel down the tree, or choose “..” to go up the tree. When you select an object and choose OK or choose “..”, that object is displayed on the top line, and the second line lists objects directly below it.

Continue to browse the NDS tree until the User Login object is displayed in the second line. Choose OK.

**Enter Password**

Enter the login password for the NDS tree, using the up and down arrow buttons to select characters, and the left and right arrow buttons to move the cursor. Choose OK.

**Navigate NDS Tree to the Print Server.**

Choose OK to browse the NDS tree to the Print Server object.

Browsing to find the Print Server object begins with the NDS tree that you selected previously (with Select NDS Tree). In each subsequent browse screen, the top line represents your current location. The second line contains:

- A list of objects in the current container directly below your current location
- The symbol “..” to go up one level

With a container object selected, choose OK to travel down the tree or “..” to go up the tree. When you select an object and choose OK or “..”, that object is displayed on the top line, and the second line lists objects directly below it.

When the Print Server is displayed in the second line, choose OK.

**Enter Print Server Password**

Enter the Print Server password, using the up and down arrow buttons to enter characters, and the left and right arrow buttons to move the cursor. Choose OK. (If no password is required, choose OK.)

**Server should look for print queues in:****Entire NDS Tree/Specif. Subtree [Entire NDS Tree]**

By default, the EB-105EX searches the entire NDS tree for EB-105EX print connections. This option lets you restrict the search for EB-105EX print jobs to a subtree (the Print Queue root) in which the EB-105EX print connections have been defined. This makes the search more efficient. Select Entire NDS Tree if the tree is small. Select Specif. Subtree to restrict the search and specify the subtree.

If you select Entire NDS Tree, choosing OK returns to PServer Setup. Proceed with Bindery Setup (see [page 4-22](#)), set the Polling Interval (see [page 4-27](#)), or choose Exit PServer Setup to return to the Service Setup menu.

**Browse to the root of the Print Queue Subtree.**

This message is displayed if you selected Specified Subtree in the previous option. Choose OK to browse the NDS tree to the Print Queue subtree.

Browsing to find the container object begins with the NDS tree that you selected previously (with Select NDS Tree). In each subsequent browse screen, the top line represents your current container. The second line contains:

- A list of objects in the current container directly below your current location
- The symbol “..” to go up one level
- The symbol “.” to select the current container object (displayed in the top line) without traveling down the tree

With an object selected, choose OK to travel down the tree or “..” to go up the tree. When you select an object and choose OK or “..”, that object is displayed on the top line, and the second line lists objects contained within.

When the container that contains print queues is displayed in the second line, choose OK. In the next screen, choose “.” and choose OK to select the object in the top line.

When the EB-105EX displays the container name, choose OK to return to PServer Setup.

Proceed with Bindery Setup (see [page 4-22](#)), set the Polling Interval (see [page 4-27](#)), or choose Exit PServer Setup to return to the Service Setup menu.

Network Setup  
Service Setup  
PServer Setup

## Bindery Setup options

### Bindery Setup

Use Bindery Setup if you have already configured one or more bindery servers (file servers running NetWare in bindery emulation) with a Print Server and a Print Queue for EB-105EX jobs. Before entering bindery settings, be sure that the EB-105EX is connected to the network and the NetWare file server is running. If Guest Login is not supported, you need a valid user name and password.

**NOTE:** The terms NetWare server, Novell server, and IPX file server are in common use and are used here interchangeably to mean the server on an IPX network running Novell NetWare networking software.

### Bindery Setup menu

Because you can set up more than one Novell server to handle EB-105EX print jobs, an additional menu is displayed for this purpose. The options are:

- Add File Server—creates a new file server connection to the EB-105EX. You can set up a maximum of eight file server connections. After you have finished adding a new server, you return to the Bindery Setup menu, where you can set up another server.
- View Server List—displays the list of file servers that have already been selected to communicate with the EB-105EX.
- Edit Connection—lets you change the NetWare Print Server that will print to the EB-105EX.
- Remove File Server—lets you disconnect the EB-105EX from a file server to which it is currently connected. Remove a file server when you want to reduce the number of connections to the EB-105EX or reassign the connection to a different NetWare file server.
- Exit Bindery Setup—lets you exit this menu after you have added all servers, viewed a list of file servers, or removed a file server from the list.

**NOTE:** If you change your mind about any of the menus you have selected, press Menu/Cancel to escape and return to the main Bindery Setup menu. To cancel all changes, exit Network Setup and select No to Save Changes.

Network Setup  
Service Setup  
PServer Setup  
Bindery Setup

## Add File Server

This option provides two methods to add a Novell NetWare file server.

### Select File Server

#### From List/Search by Name [From List]

You may select the file server from a scrollable list or by a name search. Choose From List if your network does not have a large number of file servers. Choose Search by Name if the number of file servers is so large that scrolling through the list is time-consuming.

If you selected **From List**:

#### Add Server

##### *List of all servers*

The EB-105EX obtains a list of NetWare file servers by querying the IPX network. Use the up and down arrow buttons to select a NetWare file server from the list. Choose the server on which you have configured a print server and print queue to handle EB-105EX print jobs.

If you selected **Search by Name**:

#### Enter First Letters of Server Name

Use the up and down arrow buttons to enter the first letters of the name of the file server you want to use, and then choose OK.

#### Add Server

##### *List of servers matching the search*

This option is displayed if you entered letters to search. Scroll through the list to select the server you want.

Once you have chosen a file server, the EB-105EX immediately tries to log in as a guest without a password. If it succeeds, it skips to the NetWare Print Server option.

If you try to add a file server but all EB-105EX connections are already in use, you are prompted to remove a file server (see “[Remove File Server](#)” on page 4-26).

**File Server Login****administrator/supervisor/Enter Login Name [supervisor]**

This option appears only if a password is required for login, if there is no guest account, or if the guest account is restricted. Choose Enter Login Name to enter your own login name and password or log in as a guest. Choose administrator or supervisor if you have those privileges.

**Enter Your Login Name****[guest]**

This option and the next appear only if you selected Enter Login Name for the File Server Login. Enter your login name or select guest.

**Enter Your File Server Password**

Enter the password for logging in to your NetWare file server.

**NetWare Print Server*****Print Server Name***

Select the name of the print server that you configured in the NetWare utility PCONSOLE. This print server routes print jobs to the EB-105EX from computers on IPX networks.

**Print Server Password**

This option appears only if your NetWare print server is set up to require you to log in with a password. Enter your print server password.

Choose Add Server again until you have connected each NetWare file server you configured for printing to the EB-105EX. When you have added all the IPX file servers for your site, choose Exit Bindery Setup.

Network Setup  
Service Setup  
PServer Setup  
Bindery Setup

### **View Server List**

#### ***Supported servers***

This option allows you to view the list of file servers currently connected to the EB-105EX—that is, servers you have added in Bindery Setup. You are notified if there are none. When you choose OK, you return to the Bindery Setup menu.

Network Setup  
Service Setup  
PServer Setup  
Bindery Setup

### **Edit Connection**

On each connected NetWare file server, you defined a print server to handle EB-105EX print jobs. Choose this option to change the print server assigned to the EB-105EX.

#### **Choose File Server**

##### ***File server name***

From the list of connected NetWare file servers, choose the file server whose print server you want to change.

#### **NetWare Print Server**

##### ***List of print servers on selected file server***

Choose the name of the print server you want to use. This print server routes print jobs to the EB-105EX from computers on IPX networks.

If you do not want to make any changes, press Menu/Cancel to return to the Bindery Setup menu.

**Enter Your Print Server Password**

This option appears only if your NetWare print server is password-protected. Enter your print server password.

The Bindery Setup menu is displayed again. You can edit other connections, choose another Bindery Setup option, or choose Exit Bindery Setup.

Network Setup  
Service Setup  
PServer Setup  
Bindery Setup

**Remove File Server****Remove support for  
*File server name***

This option allows you to select a NetWare file server from a list of connected file servers and remove the connection to it. You are notified that you have removed the connection, and the Bindery Setup menu is displayed again. If you change your mind and do not want to remove any of the file servers, press Menu/Cancel.

Choose another Bindery Setup option (such as adding another file server) or choose Exit Bindery Setup and proceed to set the polling interval.

Network Setup  
Service Setup  
PServer Setup  
Bindery Setup

**Exit Bindery Setup**

Press Exit Bindery Setup to exit Bindery Setup after you view a list of IPX file servers, remove a file server from the list, or connected all the configured NetWare file servers. After you exit Bindery Setup, you return to the PServer Setup menu.



## Polling Interval options

Network Setup  
Service Setup  
PServer Setup

### Polling Interval

Whether you use NDS or Bindery services, choose Polling Interval from the main PServer Setup menu. If you do not reset the interval, the default value is 15 seconds.

#### NetWare Server Poll Interval in Seconds 1–3600 [15]

Specify the interval, in seconds, at which the EB-105EX communicates with the Novell print server to see if there are print jobs waiting.

**NOTE:** If you select a short interval, the amount of network traffic increases. This may slow down other network jobs.

## Windows Setup options

Network Setup  
Service Setup  
Windows Setup

### Enable Windows Printing Yes/No [No]

Enabling Windows Printing enables Server Message Block (SMB), the file and printer sharing protocol built into Windows. Enabling SMB allows the EB-105EX to be listed on the network so that Windows clients can print to a particular print connection (Hold, Print, or Direct) on the EB-105EX without any other networking software. For information on setting up a Windows computer for Windows printing, see the *User Software Installation Guide*. Windows printing runs via TCP/IP, so you must configure TCP/IP on the EB-105EX and on all computers that use Windows printing.

**Use Automatic Configuration****Yes/No [No]**

This option appears if you chose DHCP or BOOTP as the protocol for automatically obtaining the IP address of the EB-105EX.

Choose Yes and the EB-105EX uses a WINS name server and automatically obtains its IP address. Make your choice and proceed to the Server Name option.

Choose No to proceed to the Use WINS Name Server option, where you specify whether to use a WINS name server, and then to the WINS IP Address option, where you specify its IP address.

**Use WINS Name Server****Yes/No [No]**

This option appears if you chose No for Use Automatic Configuration. Broadcasts from SMB devices cannot pass across a router without a WINS name server. Setting up the WINS name server is outside the scope of this manual. To find out if a name server is available, contact your network administrator.

**WINS IP Address****[127.0.0.1]**

This option appears only if you chose Yes for Use WINS Name Server. Change the default address to the correct IP address for the WINS Name Server. Obtain the correct address from your network administrator.

**Server Name*****Default Name***

The server name is the name that appears on the network for accessing the EB-105EX via SMB. The default name is the same as the server name assigned in Server Setup (see [page 4-7](#)).

**Server Comments**

Server comments (optional) can contain information about the printer. These comments are listed in the EB-105EX Properties in Network Neighborhood. You can enter a maximum of 15 characters.

**Set Domain Name****Select from list/Enter manually [Select from list]**

This option provides two ways to specify the workgroup or domain in which you want the EB-105EX to appear.

If you selected **Select from list:**

**Choose Domain*****List of domains***

Select the workgroup or domain from the list.

If you selected **Enter manually:**

**Workgroup or Domain**

Enter the name of the workgroup or domain. For more information about entering text and characters, see “[Types of Setup screens](#)” on page 4-6.

**Web Services Setup**

Network Setup  
Service Setup  
Web Services Setup

**Enable Web Services****Yes/No [No]**

Select Yes to make Fiery WebTools available to clients (see [page 6-1](#)). TCP/IP must be enabled on the EB-105EX and on client workstations. The WebTools include WebSpooler, Status, WebLink, WebScan, WebDownloader, WebSetup, and Installer.

Each user must have a Java-enabled Web browser and a valid IP address or DNS host name. For details on browser choice and workstation requirements, see the [User Software Installation Guide](#).

# 4

## 4-30 Performing Setup from the Copier Operation Panel

### IPP Setup

Network Setup  
Service Setup  
IPP Setup

#### Enable IPP Yes/No [Yes]

Select Yes to enable printing with the Internet Printing Protocol (IPP). You must enable Web Services. For information on setting up client workstations to use IPP printing, see the *User Software Installation Guide*.

### Port 9100 Setup

Network Setup  
Service Setup  
Port 9100 Setup

#### Enable Port 9100 Yes/No [No]

This option enables applications to open a TCP/IP socket to the EB-105EX at Port 9100 to download a print job.

#### Port 9100 Queue Direct/Print Queue/Hold Queue [Print Queue]

Specify the EB-105EX print connection for downloading jobs to Port 9100. Only the print connections you have enabled in Printer Setup are available.

### E-mail Setup

Network Setup  
Service Setup  
E-mail Setup

#### Enable E-mail Services Yes/No/Restore Settings [No]

This option enables the EB-105EX to use e-mail as a means of communication for a variety of purposes. The EB-105EX serves as a messenger between the copier and the e-mail recipient. Choose Restore Settings to restore the previous settings.

**Enable Print via E-mail****Yes/No [Yes]**

Choose Yes to enable printing via e-mail and scanning through e-mail and to print an E-mail Log.

**Enable Remote Diagnostics****Yes/No [No]**

Enabling this option allows the service technician to remotely run diagnostics through e-mail. For more information, see your copier documentation.

**Outgoing Server****[127.0.0.1]**

Enter the IP address or DNS name of the server (SMTP) on your network that handles outgoing e-mail.

**Incoming Server****[127.0.0.1]**

Enter the IP address or DNS name of the server (POP3/IMAP) on your network that handles incoming e-mail.

**Server Type****POP3/IMAP [POP3]**

Choose the type of mail server.

**Fiery E-mail Address*****youremail@yourdomain.com***

Enter the Fiery e-mail address.

**Account Name*****youraccount***

Enter the mailbox name specified on the mail server. The client mail service acknowledges e-mails sent to the EB-105EX E-mail Service using this account name.

This is the internal name your network recognizes, which is not necessarily the same as the User Name. Use the following characters for the account name:

0-9 A-Z, ! # \$ % & ' \* + - / = ? ^ \_ { | } ~

You can enter a maximum of 14 characters.

**Enter Password**

Enter the password for the e-mail account.

**Administrator Email Address**

*youremail@yourdomain.com*

Enter the Administrator e-mail account. For more information, see your copier documentation.

**Timeout (sec)**

**30–300 [60]**

Enter the length of time, in seconds, the EB-105EX should try to connect to each e-mail server before determining that the connection is unsuccessful.

**Polling Interval (sec)**

**5–3600 [15]**

Enter the interval in seconds at which the EB-105EX should automatically check for new e-mail.

**Max Scan File Size**

**0–15000 [1000]**

Specify the maximum file size the EB-105EX can send scans as an attachment. If the scan file exceeds this maximum, the file is automatically sent as a URL.

**FTP Setup**

Network Setup  
Service Setup  
FTP Setup

**Enable FTP Services**

**Yes/No [Yes]**

This option enables users to scan jobs from the EB-105EX to an FTP site and print an FTP Log.

**Enable Proxy Setup**

**Yes/No [No]**

Select Yes to enable the following proxy server setup options for security purposes when scanning to an FTP site. Selecting No returns you to the main Network Setup menu.

**Proxy Server IP Address****[127.0.0.1]**

Enter the IP address of the proxy server on your network. This option appears only if you have selected Yes to Enable Proxy Setup.

**Proxy Server Port Number****1-65535 [21]**

Enter the port number of the proxy server on your network. This option appears only if you have selected Yes to Enable Proxy Setup. This port number must be entered at the EB-105EX when scanning jobs to a secure FTP site.

The default is “21”. The port number is required for sending scan jobs to an FTP server. When you change the port number to send a scan job, you must enter the same port number used for sending that particular scan job.

**Proxy Server Timeout (sec)****1-999 [30]**

Enter the length of time, in seconds, that the EB-105EX should try to connect to each proxy server before determining that the connection is unsuccessful. This option appears only if you have selected Yes to Enable Proxy Setup.

**Proxy Server User Name**

Enter the user name for the proxy server. This option appears only if you selected Yes to Enable Proxy Setup.

**Proxy Server User Password**

Enter the user password for the proxy server. This option appears only if you selected Yes to Enable Proxy Setup.

**Exit Service Setup**

Press Exit Service Setup to exit Service Setup.

## Printer Setup options

Printer Setup configures the connections and printing behavior associated with a particular printing device. For more information on EB-105EX print connections, see [page 3-1](#).

### TO ACCESS PRINTER SETUP OPTIONS

1. **Choose Printer Setup from the main Setup menu.**
2. **Enter the options appropriate to the printing requirements at the site.**
3. **When you have finished, save changes.**

In the following list of options, default values, where applicable, appear in brackets.

**NOTE:** For users to use the Fiery utilities and WebTools or print to the EB-105EX over a TCP/IP network, you must publish, at a minimum, the Hold queue or Print queue.

#### **Publish Direct Connection**

**Yes/No [Yes]**

This option allows users to print (or download) jobs to the EB-105EX without spooling. Jobs printed to the Direct connection are not saved in the Printed queue.

If you plan to download fonts to the EB-105EX, you must publish the Direct connection.

#### **Publish Print Queue**

**Yes/No [Yes]**

This option allows users to print (or download) jobs to the Print queue. Jobs that are printed to the Print queue are spooled to the EB-105EX hard disk and printed on a first-in, first-out basis. Only queues published in the Printer Setup are available to users.

#### **Publish Hold Queue**

**Yes/No [Yes]**

This option allows users to print (or download) jobs to the Hold queue. Jobs in the Hold queue can only be printed by copying or moving the jobs to the Print queue with the job management tools.



**Personality****Auto/PCL/PostScript [Auto]**

In PCL or PostScript mode, the EB-105EX is restricted to PCL or PostScript jobs, respectively. Jobs that do not match the personality selected on the EB-105EX are not printed. In Auto mode, the EB-105EX switches to the appropriate page description language for each job.

**Save Changes****Yes/No [Yes]**

Select Yes to activate any changes made in the Printer Setup; select No to return to the main Setup menu without making any changes.

## PostScript Setup options

PS (PostScript) Setup allows you to set defaults for the EB-105EX. Users can override most of these defaults on a job-by-job basis. However, users printing from UNIX or DOS command lines cannot override defaults from their applications. You must set defaults in PostScript Setup. For information about these defaults, see the *Printing Guide*.

### TO ACCESS POSTSCRIPT SETUP OPTIONS

1. In the main Setup menu, choose PS Setup.
2. Enter the options appropriate to the printing requirements at the site.
3. When you have finished, save changes.

In the following list of options, default values, where applicable, appear in square brackets.

**Default Paper Sizes****US/Metric [See Note below]**

Specify whether to print on US paper sizes (for example, Letter, Legal, 11x17), or Metric paper sizes (for example, A4 or A3) by default. When no page size is defined within a PostScript file, jobs are printed on Letter size paper if you selected US; or A4 paper if you selected Metric.

**NOTE:** The default value varies depending on your selections in the Select Language and Select Market Region options. These options appear when you turn on the EB-105EX for the first time or restore the factory default settings. For more information, see [“Restoring the EB-105EX to factory defaults”](#) on page 7-7.

#### **Convert Paper Sizes**

**No 8.5x11/11x17->A4/A3 A4/A3->8.5x11/11x17 [No]**

Specify whether to convert paper sizes in documents automatically to the default paper sizes specified. For example, if you select 8.5x11/11x17->A4/A3, a letter size document is automatically printed on A4 paper.

**NOTE:** This option works in conjunction with the Default Paper Sizes option. For example, if Convert Paper Sizes is set to 8.5x11/11x17->A4/A3 and Default Paper Sizes is set to US, jobs are printed A4/A3 size. This also applies to EB-105EX system pages such as the Start Page, Test Page, and Job Log.

#### **Allow Courier Substitution**

**Yes/No [Yes]**

Specify whether to substitute Courier for fonts that are unavailable when you download files to the EB-105EX, or when you print a document for which you do not have the corresponding printer font. If this option is set to No, jobs with fonts that are unavailable on the EB-105EX hard disk generate a PostScript error and do not print. This setting does not apply to PDF files; font substitution occurs automatically in PDF files.

#### **Print to PS Error**

**Yes/No [No]**

Specify whether the EB-105EX should print the available portion of a print job when it encounters a PostScript error. Select Yes to print the portion of the job that was processed before the error occurred; select No to cancel the print job entirely when a PostScript error is encountered. Select No unless you encounter printing problems.

#### **Save Changes**

**Yes/No [Yes]**

Select Yes to activate any changes made in PS Setup; select No to return to the main Setup menu without making any changes.

## PCL Setup options

PCL Setup allows you to set defaults to control printer output. These defaults can be overridden by the user from within an application, but they determine how a job prints in the absence of other information.

**NOTE:** PCL printing is supported for Windows computers only. Mac OS computers must use the PostScript driver.

### TO ACCESS PCL SETUP OPTIONS

1. Choose PCL Setup from the main Setup menu.
2. Enter the options appropriate to the printing requirements at the site.
3. When you have finished, save changes.

In the following list of options, default values, where applicable, appear in square brackets.

#### Paper Size

**Letter/Legal/11x17/12x18/16K/8K/8x13/8.5x13/8.25x13/JIS B5/JIS B4/A5/A4/A3/5.5x8.5/Executive [See Note Below]**

Specify the default paper size that the EB-105EX uses to print PCL jobs.

**NOTE:** The default value varies depending on your selections in the Select Language and Select Market Region options. These options appear when you turn on the EB-105EX for the first time or restore the factory default settings. For more information, see [“Restoring the EB-105EX to factory defaults”](#) on page 7-7.

#### Default Orientation

**Portrait/Landscape [Portrait]**

This option determines whether the text or image will be oriented along the short edge of the paper (Portrait) or the long edge of the paper (Landscape).

#### Form Length (lines)

**5-128 [60]**

This option sets the number of lines printed per page.

**Font Size (pt)****4.0-999.75 [012.00]**

When the number selected in Font Number represents a proportionally spaced scalable font, the Font Size option appears, allowing you to determine the point size (height) of the default font.

**Font Pitch (char/in)****0.44-99.99 [010.00]**

When the number selected in Font Number represents a fixed pitch scalable font, the Font Pitch option appears, allowing you to determine the width of scalable type. Pitch is measured by characters per inch, so 10-pitch type fits ten characters per inch.

**Symbol Set****ASCII/ROMAN-8/ECMA-94 L1/PC\_8... [ROMAN-8]**

Choose the symbol set that best matches the needs of users printing to the EB-105EX.

**Font Source****INTERNAL/SOFTFONT [INTERNAL]**

Specify the font source to be enabled.

**Font Number****0-999 [0]**

The font number designates the default font for the EB-105EX.

To determine font numbers, print the internal PCL Font List. The standard fonts are listed in order. The font numbers, however, are not displayed.

**Append CR to LF****Yes/No [Yes]**

Specify whether to execute a carriage return (CR) upon a line feed (LF).

**Paper Size for System Pages****US/Metric [See Note Below]**

Specify the paper size on which PCL system pages print. System pages are pages that you print from the copier operation panel, such as the PCL Font List.

**NOTE:** The default value varies depending on your selections in the Select Language and Select Market Region options. These options appear when you turn on the EB-105EX for the first time or restore the factory default settings. For more information, see [“Restoring the EB-105EX to factory defaults”](#) on page 7-7.

### Save Changes

#### Yes/No [Yes]

Select Yes to activate any changes made in PCL Setup; select No to return to the main Setup menu without making any changes.

## Administrative functions in the Setup menu

The remaining choices in the Setup menu are intended to help you manage print jobs, but are not required for printing.

- **Job Log Setup** allows you to specify whether the EB-105EX prints and clears its log of printed jobs automatically.
- **Change Password** allows you to create or change an Administrator password on the EB-105EX so that casual users cannot enter the Setup menus and change settings without permission. The Administrator password also controls many functions available from the job management tools.
- **Clear Server** clears all queued print jobs from the server—jobs in the EB-105EX Print, Hold, and Printed queues. Clear Server also clears the Job Log, all jobs archived on the EB-105EX hard disk, the index of archived jobs, and all Fiery FreeForm™ masters and the index of Fiery FreeForm masters.
- **Factory Defaults** clears all queued jobs and resets the EB-105EX Setup options to the factory defaults. Once the EB-105EX is reset, you select the language in which to display Setup menus and system messages.

### TO SET JOB LOG OPTIONS

1. In the main Setup menu, choose **Job Log Setup**.
2. Enter the options, as described in the following section.
3. When you have finished, save changes.

## Job Log Setup

The Job Log is a record of all jobs processed or printed on the EB-105EX, whether they originate from a client workstation, a networked server, or the EB-105EX. Print the Job Log from the copier operation panel or from the job management tools.

The printed Job Log lists accounting information about each job, including user name, document name, time and date printed, and number of pages. Windows and Mac OS users can enter job-specific notes that appear in the Job Log.

**NOTE:** You must enter an Administrator password to print or delete the Job Log.

Default values for the following options, where applicable, appear in square brackets.

### Auto Print Job Log Every 55 Jobs

Yes/No [No]

Use this option to specify whether the EB-105EX prints the Job Log after every 55 jobs. Setting the Job Log for automatic printing is useful if accounting for each printed page is important at your site.

### Auto Clear Job Log Every 55 Jobs

Yes/No [No]

Use this option to specify whether to clear the Job Log after every 55 jobs. If you do not enable this option, and do not clear the Job Log from the EB-105EX or from a remote workstation, the EB-105EX saves a record of all jobs.

**NOTE:** If Auto Print Job Log Every 55 Jobs is set to No, setting this option to Yes has no effect.

# 4

## 4-41 Administrative functions in the Setup menu

### **Job Log Page Size**

**11x17/A3 Letter/A4 [11x17/A3]**

Select the paper size for printing the Job Log. Regardless of page size, 55 jobs are listed on a page. The paper size used depends on the Default Paper Sizes setting in PS Setup. If the Default Paper Sizes setting is US, the Job Log is printed on Tabloid or Letter size paper, with Tabloid the default.

### **Save Changes**

**Yes/No [Yes]**

Select Yes to activate any changes made in Job Log Setup; select No to return to the main Setup menu without making any changes.

### **Exit Setup**

Choose Exit Setup from the first screen of the main Setup menu when you have finished making Setup changes.

The EB-105EX restarts and any changes you saved during Setup take effect.





## Chapter 5: Performing Setup from a Windows Computer

After you perform initial Setup (Server, Network, and Printer Setup) from the copier operation panel, you can change most Setup options from a Windows computer.

### Accessing Setup

In addition to using the copier operation panel, you can set up the EB-105EX remotely. Perform remote Setup from a Windows computer using Command WorkStation.

To use the Setup applications (Command WorkStation), you must enter the EB-105EX Administrator password. This is set during local Setup at the copier operation panel or remote Setup from Command WorkStation.

### Remote Fiery Setup

Perform Remote Setup from a Windows computer using Command WorkStation.

---

#### TO ACCESS WEBSETUP

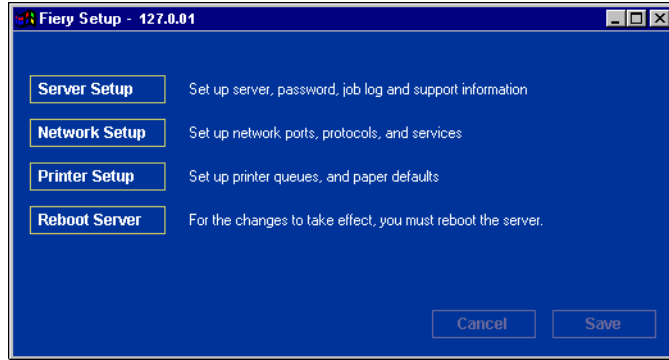
1. Start your Internet browser and enter the IP address of the EB-105EX.
2. Log in as Administrator.
3. When the EB-105EX home page appears, click WebSetup.

---

#### TO ACCESS SETUP FROM COMMAND WORKSTATION

1. Start Command WorkStation.
2. Log on as Administrator.
3. Choose Setup from the Server menu.

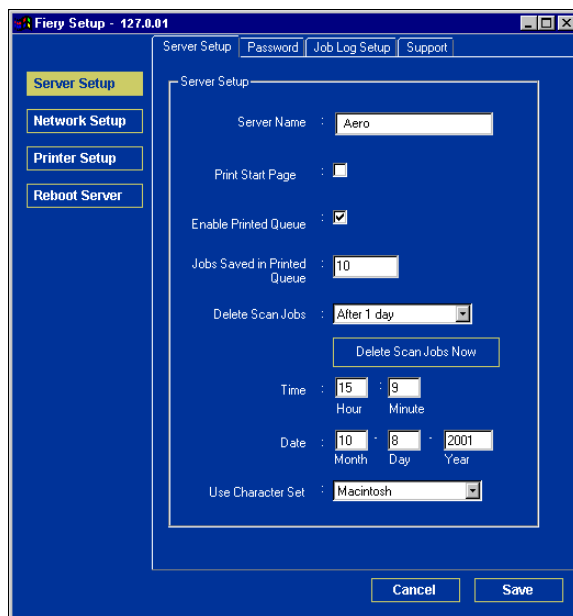
Regardless of how you access Setup remotely, the following dialog box appears.



**NOTE:** The remote Setup interface is identical from Command WorkStation and WebSetup. The Setup illustrations in this chapter are from Command WorkStation.

## Server Setup options

Server Setup options allow you to specify EB-105EX system settings that affect all users, such as the name of the EB-105EX, system date and time, passwords, and Job Log printing.



**Server Name**—Enter a name for the EB-105EX. This name appears in the Chooser on an AppleTalk network.

**NOTE:** Do not enter the device name (EB105EX) as the Server Name. If more than one EB-105EX is in use at your site, do not assign them the same name.

**Print Start Page**—Specify whether the EB-105EX should print a Start Page when turned on or restarted. The Start Page displays information such as the Server Name, current date and time, amount of memory installed, network protocols enabled, and print connections published.

**Enable Printed Queue**—Specify whether to enable the Printed queue, a storage location on the EB-105EX hard disk for recently printed jobs. You can reprint jobs from the Printed queue without resending them to the EB-105EX. If the Printed queue is not enabled, jobs are deleted from the EB-105EX hard disk immediately after they are printed.

**Jobs Saved in Printed Queue**—Specify the number of jobs to be stored in the Printed queue. Jobs in the Printed queue take up space on the EB-105EX hard disk.

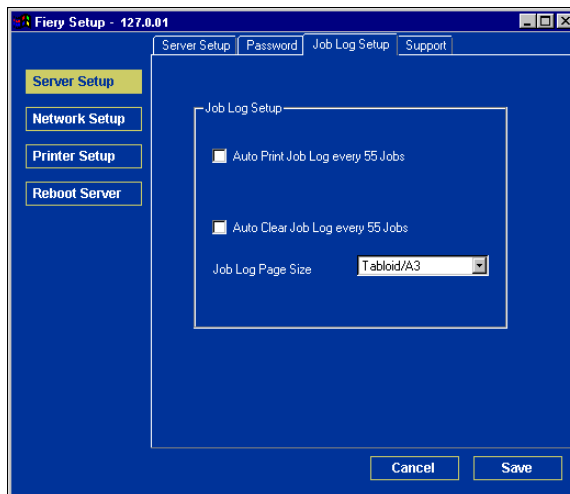
**Delete Scan Jobs**—Specify how often to delete scan jobs from the EB-105EX hard disk. Choose Manually to delete scan jobs on a job-by-job basis. Click Delete Scan Jobs Now to delete all scan jobs immediately.

**Date and Time**—Specify the system date and time, which are recorded on the Job Log.

**Use Character Set**—Specify whether the copier operation panel and the job management tools use the Macintosh, DOS, or Windows character set for displaying file names. This is important if a file name includes accented or composite characters (such as é or æ). For mixed-platform networks, select the setting with the best overall representation of the special characters you use.

**NOTE:** For more information about password Setup, see [“Setting passwords”](#) on page 7-2.

## Job Log Setup



**Auto Print Job Log Every 55 Jobs**—Specify whether the EB-105EX prints the Job Log after every 55 jobs. The Job Log lists the last 55 jobs processed on the EB-105EX, with accounting information including user name, document name, time and date printed, number of pages, and other job information.

**Auto Clear Job Log Every 55 Jobs**—Specify whether the EB-105EX clears the Job Log after every 55 jobs. If you do not select this option, the EB-105EX saves a file containing a record of all jobs ever printed. Since this file uses available space on the EB-105EX hard disk, clearing the Job Log frees disk space.

**Job Log Page Size**—Select a paper size for the printed Job Log.

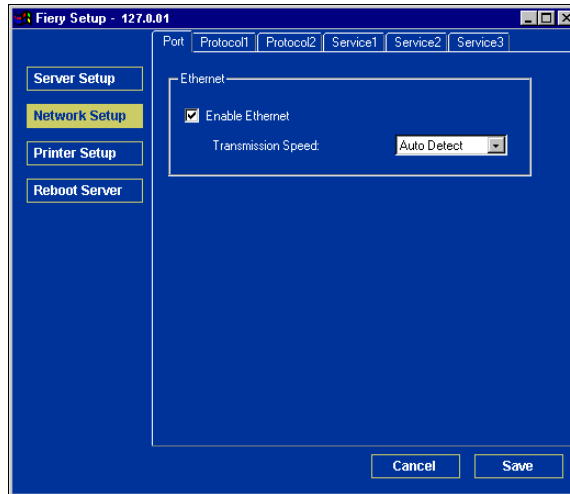
## Network Setup

Network Setup configures the EB-105EX to receive print jobs over the networks used at your site. If the EB-105EX is configured to enable more than one protocol, it automatically switches to the correct protocol when it receives a print job. When two network ports are enabled, both ports receive print jobs at the same time.

You can view and specify the following network settings in Network Setup:

- Ports—currently configured network port settings
- Protocols—including AppleTalk, IPX/SPX, and TCP/IP
- Print Services—including LPD printing (TCP/IP), NetWare printing (PServer), Windows print sharing (SMB), HTTP support (WWW), Internet Printing Protocol (IPP) printing, Port 9100 printing, E-mail Service, and FTP Service

## Ports

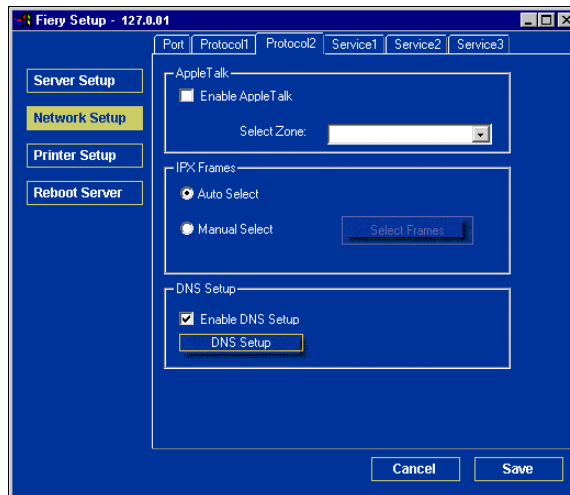
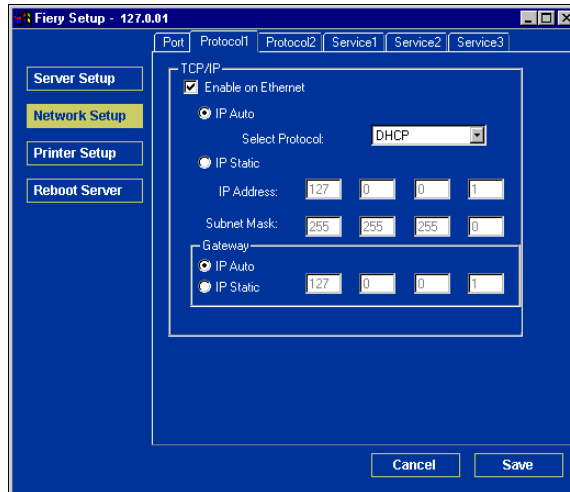


### Ethernet (Port Setup)

**Enable Ethernet**—Select this option to connect the EB-105EX to an Ethernet network.

**Transmission Speed**—Allows you to choose the speed of the network to which the EB-105EX is attached (10 Mbps or 100 Mbps). Choose Auto Detect if your network environment is mixed.

## Protocols



Change AppleTalk, IPX/SPX, and TCP/IP protocol settings for the EB-105EX on the Protocol1 and Protocol2 tabs.



**AppleTalk**

The current AppleTalk zone is displayed.

**IPX/SPX**

This option allows you to specify IPX/SPX frame types.

The EB-105EX supports the following Ethernet frame types for IPX/SPX: Ethernet 802.2, Ethernet 802.3, Ethernet II, and Ethernet SNAP. You can also configure the EB-105EX to select the frame type automatically.

**DNS**

Select Enable DNS Setup to allow the EB-105EX to use the copier features and also to resolve a name to an IP address.

**TCP/IP**

Specify TCP/IP settings. The current settings for IP address, subnet mask, and default gateway address are displayed. For information about setting up printing with TCP/IP, see [Chapter 2](#).

The EB-105EX requires a unique, valid IP address. You can set a static address or specify that the EB-105EX obtain the IP addresses automatically.

**NOTE:** If you specify the DHCP or BOOTP protocol, the EB-105EX restarts when you save your changes and exit Setup. Allow the EB-105EX to restart and return to Idle before printing a Configuration page or proceeding with any other operations.

To set the subnet mask, enter one of the following values:

255.0.0.0 if the IP address starts with a number less than 128

255.255.0.0 if the IP address starts with a number from 128 through 191

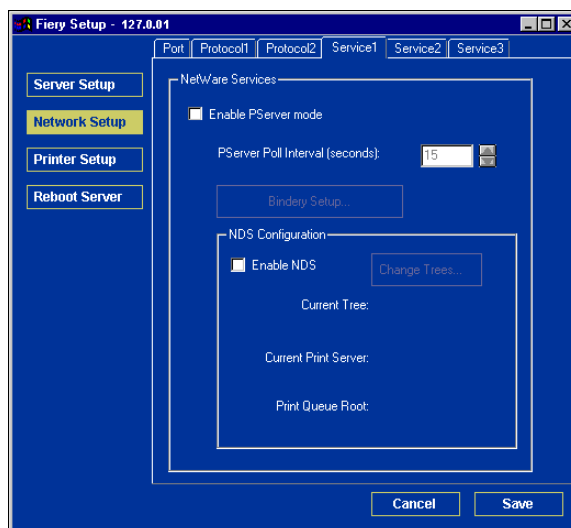
255.255.255.0 if the IP address starts with a number greater than 191

**NOTE:** Confirm the subnet mask setting with your network administrator before proceeding. In some cases, the required setting may be different from that listed.

If your TCP/IP network has a gateway and users outside the gateway plan to print to the EB-105EX using TCP/IP, enter the gateway address.

**NOTE:** The EB-105EX stores assigned IP addresses, even if you later disable TCP/IP. If you must assign the EB-105EX IP address to another device, set the EB-105EX address to a null address.

## Services



Settings on the Service tab allow you to configure the following network services:

- LPD Printing (TCP/IP)—Enable or disable LPD print services.
- NetWare Printing (PServer)—Specify NDS and Bindery services.
- Windows Print Sharing (SMB)—Enable or disable SMB print services.
- HTTP Support (WWW)—Enable or disable support for Fiery WebTools.
- Port 9100—Enable or disable support for Port 9100 printing.
- E-mail Service—Specify the Fiery E-mail Service.
- FTP Service—Enable or disable FTP services.

## LPD Printing

Fiery Setup - 127.0.0.1

Server Setup  
Network Setup  
Printer Setup  
Reboot Server

Port Protocol1 Protocol2 Service1 Service2 Service3

Windows Printing Service

☒ Enable Windows Printing Service

Server Name:

Comment:

Domain or Workgroup:

☐ Auto IP

☐ Use WINS Server

IP Address: 127 0 0 1

Enable Services

☒ Enable LPD Printing Service

☒ Enable Port 9100

Port 9100 Queue:

☒ Enable FTP Services

☒ Enable Web Services

☒ Enable IPP

Cancel Save

**Enable LPD Print Services**—Enable or disable LPD printing services.

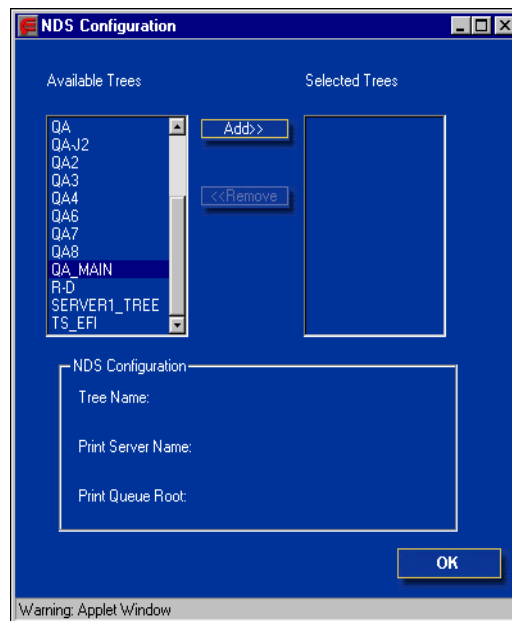
### NetWare Printing options

This option allows you to specify NDS and Bindery services.

---

#### TO SPECIFY THE NDS TREE SETTING FROM REMOTE EB-105EX SETUP

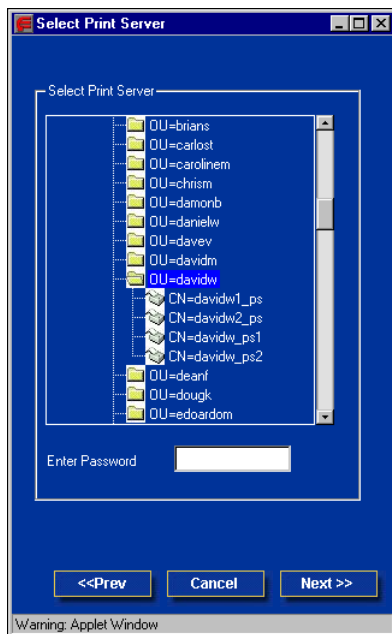
1. Select Enable PServer mode from the Service 1 tab.
2. Select Enable NDS and click Change Trees.
3. In the NDS Configuration dialog box, double-click an NDS tree in the Available Trees list.



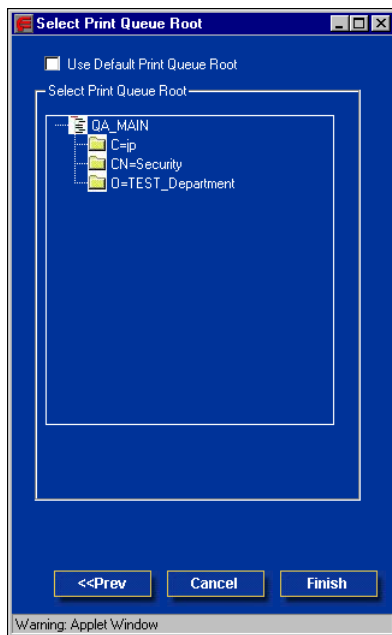
4. In the Select User Login dialog box, select Use Default User Information or enter your password, and click Next.

5. Navigate to the NDS container, select it, and click Next.

If necessary, enter the password.

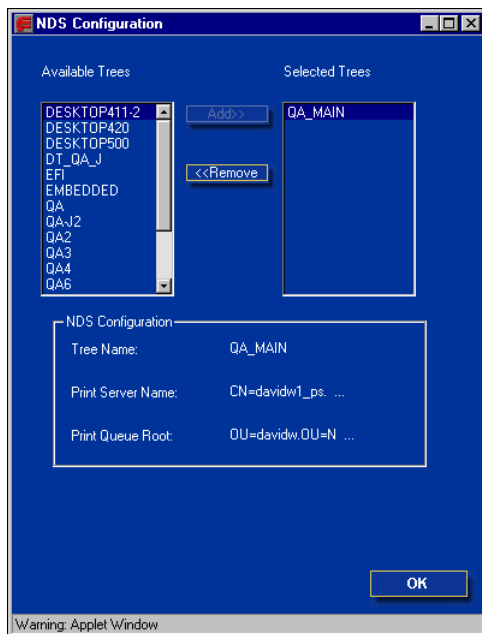


6. Select Use Default Print Queue Root or navigate to the Print Queue Root and click Finish.



**7. Click OK.**

The NDS Configuration dialog box displays information about the print server.



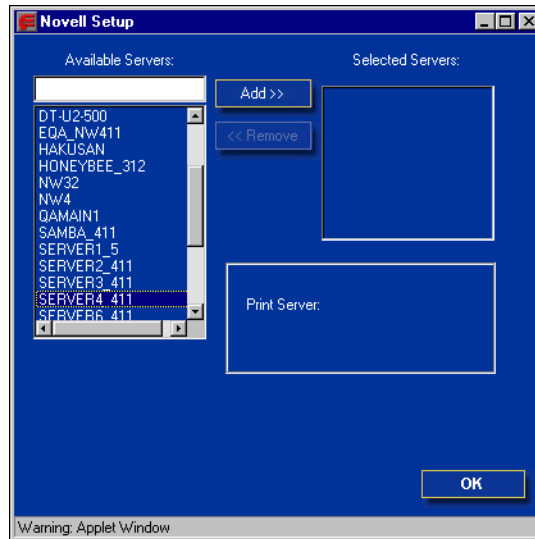
### Bindery Setup

This option allows you to specify Bindery services.

---

#### TO ADD BINDERY CONNECTIONS FROM REMOTE EB-105EX SETUP

1. Select Enable PServer mode from the Service1 tab.
2. Click Bindery Setup.
3. Select a file server from the Available Servers list.



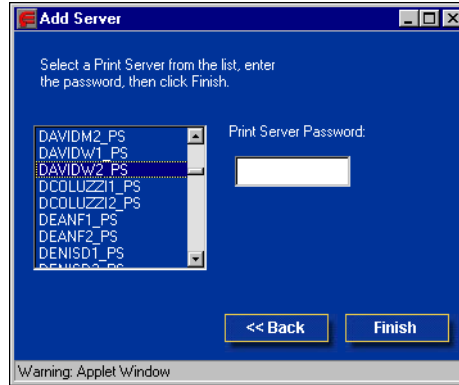
If the File Server User Name and Password dialog box appears, enter the appropriate user name and password to log on to the selected file server.



**4. Select a print server from the list and click Finish.**

If necessary, enter the appropriate password in the Print Server Password dialog box to log on to the selected file server.

The name of the newly added server appears in the Selected Servers list.

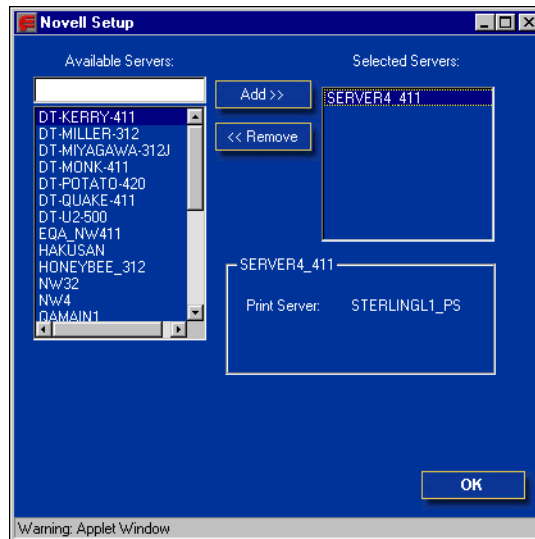


**5. When you finish adding servers, click Finish.**

---

**TO REMOVE BINDERY CONNECTIONS FROM REMOTE EB-105EX SETUP**

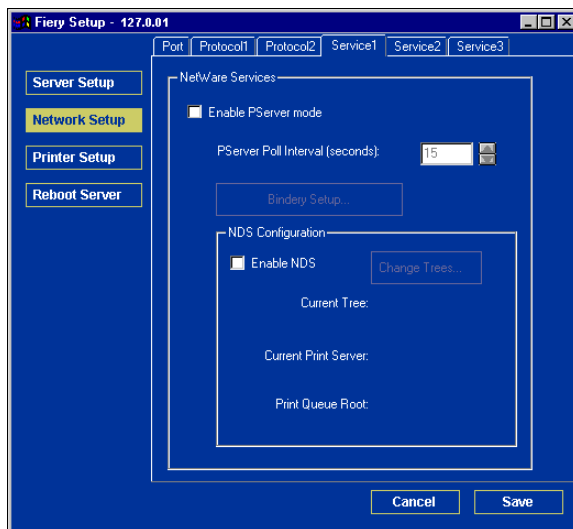
1. Select Enable PServer mode from the Service1 tab.
2. Click Bindery Setup.  
The Novell Setup dialog box appears.
3. Make your selection in the Selected Servers list.



4. With the file server selected in the Selected Servers list, click Remove.
5. Click OK.

### PServer Poll Interval

Specify the polling interval (in seconds) for NetWare printing.

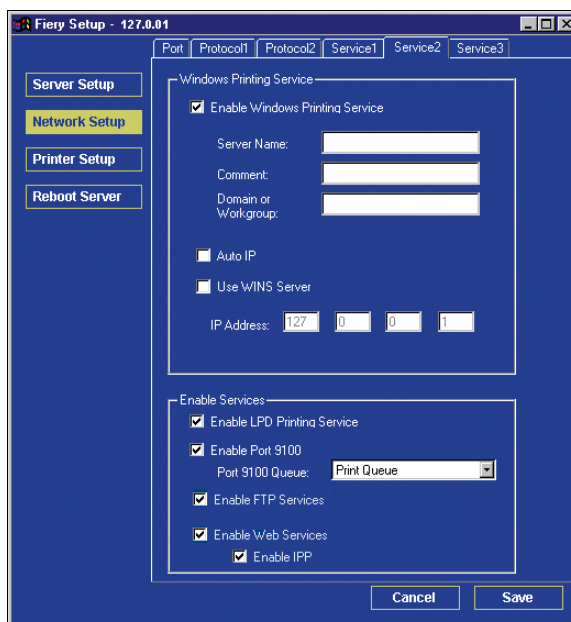


## Windows print sharing with Server Message Block (SMB)

To set up the Windows printing service, text fields may include uppercase letters, numerals, spaces, and the following characters:

- \_ . ~ ! @ # \$ % ^ & ( ) { } \ ' , "

**NOTE:** Lowercase letters are *not* allowed, except in the Comment field.



**Enable Windows Printing Service**—Select to enable SMB (Server Message Block), the file and printer sharing protocol built into Windows. Enabling SMB lists the EB-105EX on the network so that Windows clients can print to a particular print connection (Hold, Print, or Direct) on the EB-105EX without any other networking software. For information on setting up a Windows client for Windows printing, see the [User Software Installation Guide](#).

**NOTE:** Windows (SMB) printing runs over TCP/IP, so you must configure TCP/IP on the EB-105EX and any computers that use Windows printing.

**Server Name**—Enter the server name that appears on the network. Use the same name as the server name assigned to the EB-105EX (see [page 5-3](#)) or choose another name.

**Comment**—Enter information about the printer, up to 15 characters. These comments are listed in the Properties of the EB-105EX in Network Neighborhood. Lowercase letters are allowed in this field.

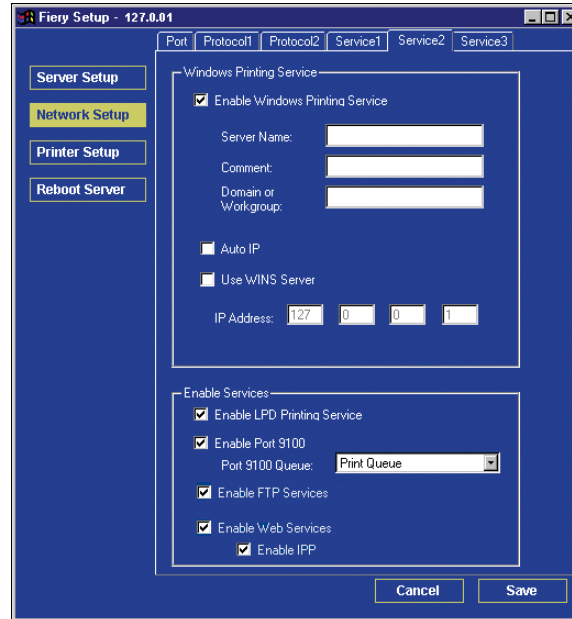
**Domain or Workgroup**—Enter the workgroup or domain in which the EB-105EX should appear.

**Auto IP**—If you have already enabled IP Auto in Protocol Setup, and selected DHCP or BOOTP as the protocol for obtaining an IP address, select this option to allow the EB-105EX to obtain the IP address automatically for the WINS Name Server. If you do not select this option, use the following two options to specify whether to use a WINS Name Server and its IP address.

**Use WINS Server**—Select to use a WINS name server. Broadcasts from SMB devices cannot be routed beyond their original network segment without a WINS name server. Setting up the WINS name server is outside the scope of this manual. To determine if a name server is available, contact your network administrator.

**IP Address**—Enter the IP address of the WINS name server.

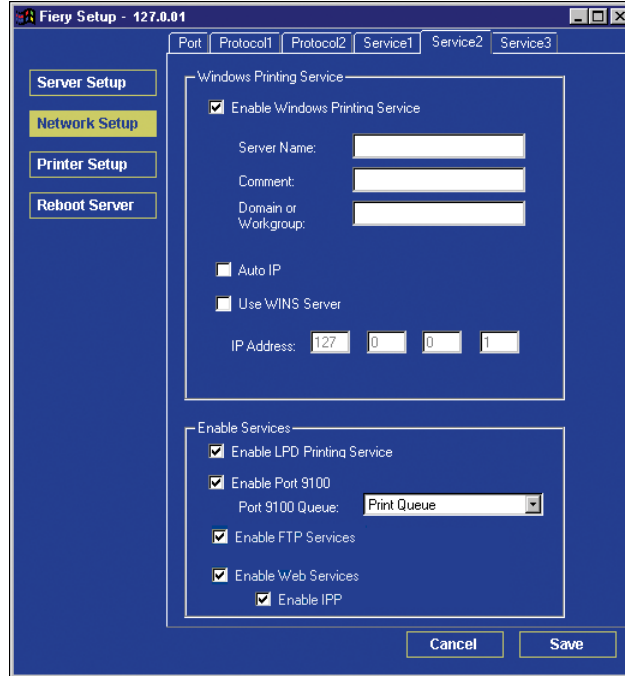
## HTTP Connection Support (WWW)



**Enable Web Services**—Select to make the Fiery WebTools available to users (see [page 6-1](#)). TCP/IP must already be enabled on the EB-105EX and on users' computers. The Fiery WebTools include WebSpooler, Status, WebLink, WebSetup, WebDownloader, WebScan, and Installer. A Java-enabled Web browser and a valid IP address are required for each user. For details on supported browsers and workstation requirements, see the *User Software Installation Guide*.

**Enable IPP (Internet Printing Protocol)**—Enable printing with the IPP. You must enable Web Services. For information on setting up users' computers to use IPP printing, see the *User Software Installation Guide*.

## Port 9100 printing



**Enable Port 9100**—Enable applications to open a TCP/IP socket to the EB-105EX at Port 9100 to download a print job.

**Port 9100 Queue**—Attach Port 9100 to any of the published EB-105EX print connections.

## FTP Services

**Enable FTP Services**—Allow users to send jobs to an FTP server where other users can retrieve them.

## E-mail Service Setup

**Fiery Setup - 127.0.01**

Port Protocol1 Protocol2 **Service1** Service2 Service3

**Server Setup**  
**Network Setup**  
**Printer Setup**  
**Reboot Server**

**E-mail Service**

☒ E-mail Service Setup

☒ Enable Print via E-mail?  
☐ Enable Remote Diagnostics

Incoming Mail Server:  
10.11.136.36

Server Type:  
POP3

Outgoing Mail Server:  
10.11.136.36

Timeout: 60 Sec Polling Interval: 15 Sec Attachment Maximum Size: 1000 (KB)

Mailbox Account Name:

Fiery E-mail Address:

Password:

Verify Password:

Administrator E-mail Address:

**Cancel** **Save**

**E-mail Service Setup**—Enable E-mail Service; E-mail Service is required for all e-mail client services.

**Enable Print via E-mail**—Select to accept print jobs sent via e-mail. If this option is cleared, print jobs sent via e-mail are ignored.

**Enable Remote Diagnostics**—Select to allow the service technician to remotely run diagnostics through e-mail.

**Incoming Mail Server**—Specify the IP address or server name that communicates the appropriate mail server and contact information to the EB-105EX.

**Server Type**—Specify the e-mail protocol used to communicate with the incoming mail server.

**Outgoing Mail Server**—Specify the IP address or server name that communicates the appropriate mail server and contact information to the EB-105EX.



**NOTE:** You must define both an Incoming and Outgoing mail server. If you do not define an Outgoing mail server, the E-mail Service assumes that the incoming and outgoing server names are the same.

**Timeout (seconds)**—Specify the maximum amount of time that is to elapse as the EB-105EX attempts to connect to the mail server.

**Polling Interval**—Specify how often the EB-105EX checks the mail server for relevant e-mail.

**Attachment Maximum Size**—Specify the maximum file size of a scan sent by the EB-105EX as an attachment. If the scan file exceeds this maximum, it is automatically sent as a URL.

**Mailbox Account Name**—Enter the mailbox name specified on the mail server. This name tells the client mail service which account contains e-mail messages for the EB-105EX.

This is the internal name your network recognizes, which is not necessarily the same as the User Name.

Use the following characters for the account name:

0-9 A-Z, ! # \$ % & ' \* + - / = ? ^ \_ ' { | } ~

You can enter a maximum of 14 characters.

**NOTE:** The account name entered in this field must first be specified on the mail server by the administrator.

**Fiery E-mail Address**—Enter the name of the e-mail account. For example, pat@test.com.

**Password**—Enter a password for accessing the mailbox account on the mail server.

**Verify Password (remote Setup only)**—Reenter your password.

**Administrator E-mail Address**—Enter the Administrator's e-mail address specified in EB-105EX Setup.

The administrator authorizes a unique e-mail address to remotely administer e-mail services. If an error occurs while you are performing a job to e-mail, E-mail Service sends an error message to the Administrator E-mail Address specified. The administrator can authorize additional administrator e-mail addresses from this e-mail address.

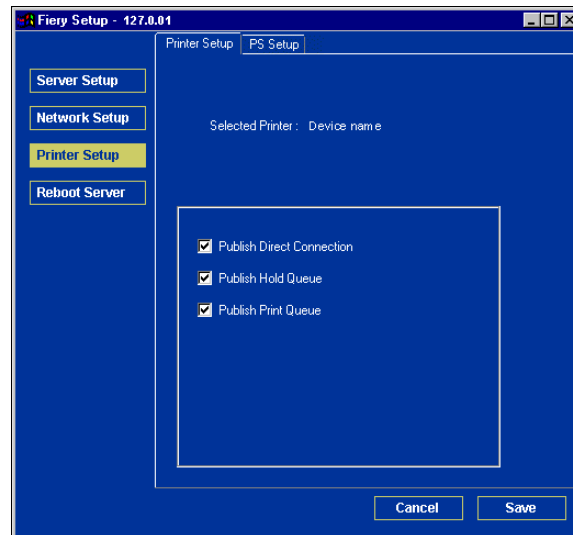
## Printer Setup options

From this dialog box, you can access the Printer Setup and PS Setup tabs.

**NOTE:** In the following illustrations, “Device name” represents the model of the copier connected to the EB-105EX, which is EB105EX.

## Printer connections

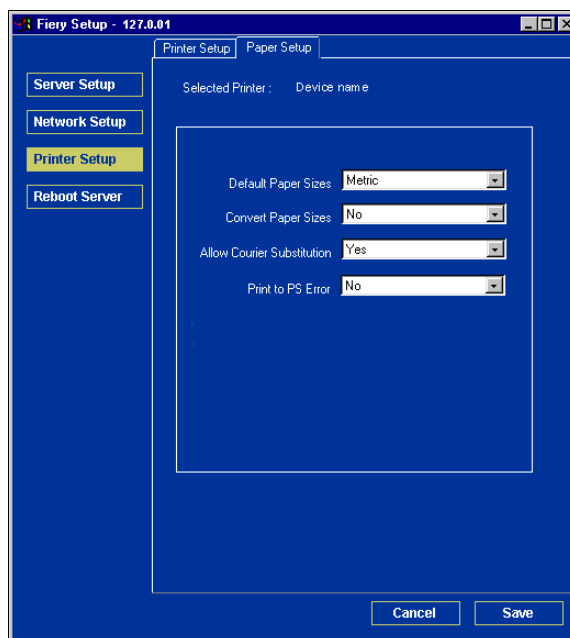
Specify whether to publish the Print queue, Hold queue, or Direct connection.



## PS (PostScript) Setup

The options in the PS Setup menu in local Setup are located on the PS Setup tab in remote Setup.

**NOTE:** In the following illustrations, “Device name” represents the model of the copier connected to the EB-105EX, which is EB105EX.



**Default Paper Sizes**—Specify whether to print on U.S. paper sizes (for example, Letter, Legal, or Tabloid), or Metric paper sizes (for example, A4 or A3) by default. When no paper size is defined within a PostScript file, jobs are printed on Letter-size paper if you select US, or A4 paper if you select Metric.

**Convert Paper Sizes**—Specify whether to convert paper sizes automatically to the default paper sizes specified. For example, if you select 8.5×11/11×17→A4/A3, a Letter size job is automatically printed on A4 paper.

**Allow Courier Substitution**—Specify whether to substitute Courier for unavailable fonts. When you choose Off, jobs requiring fonts unavailable on the EB-105EX hard disk generate a PostScript error and do not print. This setting does not apply to PDF files; font substitution occurs automatically for PDF files.

**Print to PS Error**—Specify whether the EB-105EX prints the available portion of a print job when it encounters a PostScript error. In general, this option is No.

- When you choose No, the printing of the entire job is canceled when a PostScript error occurs, but the processed portion of the job and the PostScript error information are stored on the EB-105EX. You can view the job and the error information from the job management tools.
- When you choose Yes, the portion of the job processed before the error occurred is printed.

## Exiting Setup

When you have finished specifying Setup options, click OK and close the Setup dialog box. You are notified that the EB-105EX must be restarted for the new settings to take effect. You can restart now or later. If Command WorkStation is running, the connection to the EB-105EX is lost and you must log on again when the server restarts.

When you have completed Setup and restarted the EB-105EX for the first time, install the user software for printing on remote workstations, as described in the *User Software Installation Guide*. To confirm the network connection and your Setup, print a test job from a remote workstation.

## Printing the Configuration page

The Configuration page lists the settings in effect for the current Setup. After you perform Setup, print a Configuration page to confirm your settings.

The other pages you can print from Command WorkStation include the PS Test Page, PCL Test Page, Job Log, PS Font List, PCL Font List, E-Mail Log, and FTP Log. For more information on these pages, see the *Job Management Guide*.

---

### TO PRINT THE CONFIGURATION PAGE

1. In Command WorkStation, choose **Print Pages from the Server menu**.
2. Click **Configuration**.
3. Click **Print**.

Post the current Configuration page near the server for quick reference. Users need the information on this page, such as the current printer default settings.



## Chapter 6: Configuring Fiery WebTools

Fiery WebTools allow you to manage your EB-105EX remotely from the Internet or from your company's intranet. Fiery WebTools has its own home page, from which you can select a variety of functions, including Status, WebSetup, WebSpooler, WebLink, Installer, WebScan, and WebDownloader.

For more information on using Fiery WebTools, see the *Printing Guide*.

### Configuring the EB-105EX and clients for Fiery WebTools

Fiery WebTools provide access to many EB-105EX functions via the Internet (or intranet), providing additional flexibility in remote management. You can access the Fiery WebTools from a Windows or Mac OS computer.

In order for network users to access and use Fiery WebTools, you must set certain EB-105EX options in Network Setup and Printer Setup from the EB-105EX copier operation panel. You also must prepare each user's computer to communicate with the EB-105EX over the Internet or intranet.

For more information about Network Setup, see [Chapter 2](#).

---

#### TO SET UP FIERY WEBTOOLS ON THE EB-105EX

1. Set Enable Ethernet to Yes in Network Setup>Port Setup>Ethernet Setup.
2. Set Enable TCP/IP for Ethernet to Yes in Network Setup>Protocol Setup>TCP/IP Setup>Ethernet Setup.
3. Set Enable Web Services to Yes in Network Setup>Service Setup>Web Services Setup.
4. Exit Network Setup, and choose OK to Save Changes.
5. Confirm Publish Print Queue is set to Yes in Printer Setup.
6. Exit Printer Setup, and choose OK to Save Changes.

---

**TO SET UP FIERY WEBTOOLS ON A WORKSTATION**

1. **Enable TCP/IP networking.**
2. **Assign the workstation a valid, unique IP address, a subnet mask, and a gateway address, if required.**
3. **Install an Internet browser that supports the Java language and frames.**

Make sure Java is enabled. For more information about supported browsers and Fiery WebTools requirements, see the *User Software Installation Guide*.

---

**TO ACCESS FIERY WEBTOOLS**

1. **Start your Internet browser.**
2. **Enter the IP address or DNS name of the EB-105EX.**
3. **Press Enter.**

The Fiery WebTools home page appears.
4. **Click the name of a particular WebTool.**
5. **Click Configure to enable specific Fiery WebTools for users.**



## Setting the WebLink destination

You can change the pre-set WebLink destination; this function requires the Administrator password, if one has been set.

---

### TO CHANGE THE WEBLINK DESTINATION

1. **Start your Internet browser.**
2. **Enter the IP address or the DNS name of the EB-105EX.**  
The Fiery WebTools home page appears.
3. **Enter the Administrator password, if required, and click OK.**
4. **Press the Control key (Mac OS) or Ctrl key (Windows) as you click WebLink.**  
The Update WebLink dialog box appears.
5. **Enter the new WebLink address (URL) and click OK.**



## Chapter 7: Administering the EB-105EX

This chapter provides tips on managing EB-105EX printing.

### Administrator functions

Administration features are included with the user software and are built into the EB-105EX. The following table describes where to find information on these features (page references refer to this manual).

For these operations	And these tasks	See
Setting up network servers	Setting up servers to manage and share printing services	This manual
Connecting and setting up the EB-105EX	Connecting the EB-105EX and performing EB-105EX Setup	This manual
	Setting up the EB-105EX to allow user access to Fiery WebTools	This manual <i>Release Notes</i>
Setting up the printing environment	Setting printer defaults, including modes, imaging, paper size handling, error handling	Printer Setup, <a href="#">pages 4-34 and 5-26</a> PS Setup, <a href="#">pages 4-35 and 5-27</a> PCL Setup, <a href="#">page 4-37</a> <i>Printing Guide</i>
Setting up the job environment	Publishing the Direct connection, Print queue, or Hold queue to end users on various platforms	Printer Setup, <a href="#">Chapter 2, pages 4-34 and 5-26</a>
Protecting integrity of users' jobs, maintaining consistency of EB-105EX settings	Setting the Administrator password	Passwords, <a href="#">page 7-2</a> <a href="#">Chapter 3</a>
Setting up all new users	Setting up printing, including installing PostScript printer drivers and PPD files for the printer Installing optional user software Preparing users to access Fiery WebTools	This manual <i>Release Notes</i> <i>User Software Installation Guide</i>
Getting users started with printing	Printing to the EB-105EX Setting job-specific options Using Fiery utilities	<i>Printing Guide</i>  <i>Job Management Guide</i>

For these operations	And these tasks	See
Controlling the job flow	Using Fiery WebTools, Command WorkStation, and Fiery utilities, managing job priorities, tracking current jobs, canceling jobs, printing jobs in the Hold queue, and reprinting from the Printed or Hold queue	<i>Printing Guide</i> <i>Job Management Guide</i> <i>Release Notes</i>
Job accounting	Viewing, printing, and exporting the Job Log and user notes Setting automatic printing and clearing for the Job Log	<i>Job Management Guide</i> page 5-5
Maintaining optimal EB-105EX performance	Tips Deleting jobs, clearing queues	page 7-11, also <i>Job Management Guide</i>
Troubleshooting	Troubleshooting EB-105EX Setup	Appendix A

## Setting passwords

You can set or change the Administrator password for the EB-105EX. Anyone with the Administrator password can modify the Setup options, and control the flow and order of print jobs with the job management tools.

When the EB-105EX is installed, there is no password. If you do not create an Administrator password, users are not required to enter a password to modify the Setup or use the administrator functions in the job management tools. If an Administrator password has been set previously, you are required to enter it when you run Setup. Use the up and down arrow buttons to select the characters and the left and right arrow buttons to move between them (see “Types of Setup screens” on page 4-6).

## Passwords from the copier operation panel

For more information on Administrator access privileges, see [page 3-3](#). For information on controlling print jobs with the job management tools, see the *Job Management Guide*.

**NOTE:** The Operator password can be set and changed only from WebSetup or Command WorkStation.

---

**TO CHANGE THE EB-105EX PASSWORD FROM THE COPIER OPERATION PANEL**

1. **Scroll through the main Setup menu and choose Change Password.**
2. **Enter and confirm the password, as follows.**

**New Password**

Use the up and down arrow buttons to select the characters and the left and right arrow buttons to move between them. Enter characters from left to right, since the left arrow button is also a Delete key. The password can be any combination of letters and numbers up to 19 characters. Choose OK when you are done. Be sure to keep track of the password.

**NOTE:** The only way to remove a password that you cannot remember is to reinstall the system software.

**Verify New Password**

Reenter the new password, exactly as you entered it initially. If you make a mistake, you are prompted to reenter the password. The new password is effective when you save changes and restart the EB-105EX.

**Passwords from Fiery WebSetup and Command WorkStation**

You can set, change, and remove passwords for the EB-105EX. These passwords, specific to the Server process, have different uses than the Windows NT Administrator and Operator passwords. Keep track of the passwords you set for each.

**Administrator**—Controls access to Setup; Administrator privileges also include Operator privileges. Passwords set from the EB-105EX copier operation panel are for the Administrator privileges.

**Operator**—Controls access to job management functions via the job management tools.

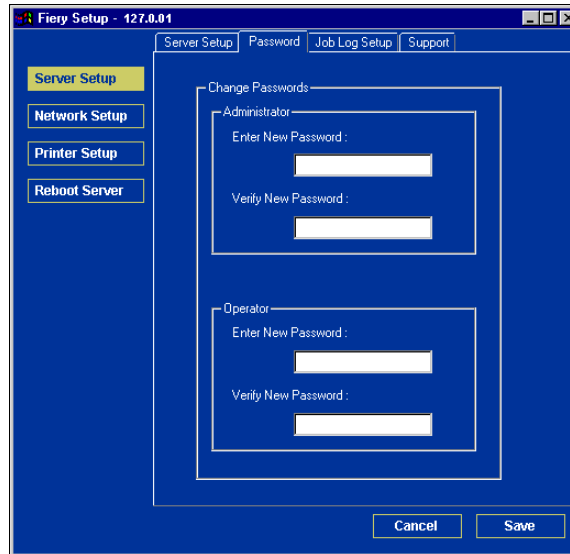
**NOTE:** For more information on EB-105EX passwords and the access privileges they allow, see [page 3-3](#).

By default, *no* passwords are set. If you do not specifically set passwords, all users will have access to important functions such as Setup (including setting passwords) and job control. We *strongly recommend* that you set at least an Administrator password to protect the EB-105EX from unauthorized changes to Setup.

---

**TO SET OR CHANGE A PASSWORD FROM FIERY WEBTOOLS OR  
COMMAND WORKSTATION**

1. In the WebSetup or Fiery Setup dialog box, choose **Server Setup** and click the **Password** tab.



2. Select the password you want to change.
3. Type the password in both the **Enter New Password** and **Verify New Password** fields.

Passwords are case-sensitive and can be any combination of letters and numbers up to 19 characters. You must enter the password *exactly* the same way both times. The new password remains in effect until you change it.

4. Click **Save**.

---

**TO REMOVE A PASSWORD FROM FIERY WEBTOOLS OR COMMAND WORKSTATION**

1. In the WebSetup or Fieri Setup dialog box, choose **Server Setup** and click the **Password** tab.
2. Select the password you want to delete.
3. Delete the asterisks (\*) in both the **Enter New Password** and **Verify New Password** fields.
4. Click **Save**.

If you forget the Administrator password, contact your authorized service representative to reinstall EB-105EX system software. This clears the Administrator password and allows you to set a new one.

## Clearing the EB-105EX

The Clear Server option allows you to delete all queued print jobs from the EB-105EX—jobs in the Print, Hold, and Printed queues. Jobs can also be deleted, individually or as a group, using the job management tools. Clear Server also deletes all jobs archived on the EB-105EX hard disk, the index of archived jobs, all Fieri FreeForm masters, and the index of Fieri FreeForm masters. The following table shows differences between Clear Server, Factory Defaults (see [page 7-7](#)), and system software reinstallation:

Deleted items	Clear Server	Factory Defaults	System Software reinstallation
Job Log	Deleted	Deleted	Deleted
Queued Jobs	Deleted	Deleted	Deleted
Scanned Jobs	Deleted	Deleted	Deleted
Mailbox	Deleted	Deleted	Deleted
Archived Jobs	Deleted	Deleted	Deleted
FreeForm Master	Deleted	Deleted	Deleted
Resident Fonts	Not Deleted	Not Deleted	Deleted
Downloaded Fonts	Not Deleted	Deleted	Deleted

Deleted items	Clear Server	Factory Defaults	System Software reinstallation
Language Selection	Not Deleted	Deleted	Deleted
Setup Options	Not Deleted	Deleted	Deleted
E-mail Address Books	Not Deleted	Deleted	Deleted
Patches	Not Deleted	Not Deleted	Deleted

To clear the EB-105EX, scroll through the main Setup menu and choose Clear Server. You are asked to confirm your selection. If the Administrator password has been set, you are prompted to enter it.

## Using the EB-105EX hard disk

Be sure to back up your original data on your own media at the same time you store and save data on the EB-105EX hard disk. Never damage the EB-105EX hard disk. Do not turn off the system while accessing the EB-105EX hard disk. For instructions on how to turn on and off the EB-105EX, see [page 7-12](#).

If the EB-105EX hard disk or system software experiences technical difficulties, data stored and saved on the EB-105EX hard disk may be irretrievably lost. Extended storage of the following data on your EB-105EX hard disk cannot be assured if unexpected events occur:

- Third party fonts installed on the EB-105EX hard disk
- Print jobs stored on the EB-105EX hard disk
- Job notes and instructions
- Scanned image data
- Jobs edited with DocBuilder Pro
- Variable data documents
- E-mail Service Address Book
- EB-105EX configuration information that lists all the settings in effect from the current system Setup



You can restore the system on the EB-105EX hard disk should anything happen to the print server hard disk. However, system settings that were changed or specified prior to hard disk breakdown are not restored. When a system is restored or the EB-105EX hard disk is replaced, the E-mail Service Address Book settings are lost.

## Restoring the EB-105EX to factory defaults

When EB-105EX system software is first installed, a backup copy is made automatically. You can recover the system from this backup without having to reload the software from CDs.

All job data is cleared when you restore the backup. For information about the items that are deleted, see [“Clearing the EB-105EX”](#) on page 7-5. You must perform Setup again because the EB-105EX is restored with default settings.

---

### TO RESTORE THE EB-105EX

1. **Make sure the EB-105EX is Idle.**
2. **Press Menu/Cancel on the copier operation panel.**
3. **Scroll down and select Run Setup.**
4. **Press OK to Continue to Setup.**
5. **Scroll down and select Factory Defaults.**
6. **Select Yes to Reset server to factory settings, and press OK.**

The system backup recovery begins.

**NOTE:** Before you can begin the EB-105EX Setup, you must specify the Select Language or Select Market Region options. If you choose English in Select Language, you must choose US or UK in Select Market Region. Make your selections carefully, as they may affect default paper sizes.

## Managing address books

The E-mail Service feature allows an administrator to import a list of e-mail addresses by sending messages to the EB-105EX via e-mail. This list is added to the Fiery Address Books. Using the Fiery Address Books, the administrator can control user access to print or scan through the E-mail Service feature.

**NOTE:** E-mail messages can be sent only from an Administrator account.

The EB-105EX supports the following address books:

- **User**—a generic address book used primarily for Scan to E-mail from the EB-105EX copier operation panel. This address book is used for outgoing e-mail only.
- **Admin**—includes users with administrative access. Administrative access allows you to modify the address book, get the current address book from the EB-105EX, and cancel or status any print job.
- **Print**—includes users who have print access. Only users whose e-mail addresses are in the Print address book are authorized to submit jobs via e-mail to the EB-105EX. Unauthorized users receive an e-mail reply that their job was not accepted by the EB-105EX for printing.

E-mail Service also allows the administrator to overwrite the address book, append new addresses, remove addresses, and retrieve current addresses on the EB-105EX.

When a print job is submitted via e-mail, the EB-105EX first checks the Print address book. If the user's e-mail address does not match any entry in the Print address book, the job will not print. Instead, the user will receive an e-mail stating that the print job was not accepted.

The default wildcard character "@" is stored in the Print address book. This allows any user to print to the EB-105EX until the administrator adds the first entry in the Print address book.

The administrator can manage the address books by sending an e-mail to the EB-105EX with command codes in the Subject and Message fields. The EB-105EX responds by e-mail to these commands with information about each request. When managing address books, see the following table.

Task	Administrator subject field	Administrator message field	Fiery e-mail response subject field	Fiery e-mail response message field
To retrieve a specific address book	#GetAddressBook <i>name of address book</i>  For example: #GetAddressBook Admin		Address Book <i>name of address book</i>  For example: Address Book Admin	List of addresses in the specified address book.
To add addresses to an address book	#AddAddressTo <i>name of address book</i>  For example: #AddAddressTo Print	name@domain, or “display name” <name@domain> end  For example: name1@domain name2@domain ... end	Added to Address Book <i>name of address book</i>  For example: Added to Address Book Print	List of addresses added to the address book.  The EB-105EX also lists any addresses that cannot be added and includes the reason.
To clear an address book	#ClearAddressBook <i>name of address book</i>  For example: #ClearAddressBook User		Address Book <i>name of address book</i> cleared or Address Book <i>name of address book</i> not cleared  For example: Address Book User cleared	If the address book is not cleared, the reason is given.

Task	Administrator subject field	Administrator message field	Fiery e-mail response subject field	Fiery e-mail response message field
To delete an address from an address book	#DeleteAddressFrom <i>name of address book</i>  For example: #DeleteAddressFrom User	name@domain, or “display name” <name@domain> end  For example: name1@domain name2@domain ... end	Removed from Address Book <i>name of address book</i>  For example: Removed from Address Book User	Deleted Address 1 Deleted Address 2 The EB-105EX also lists any addresses that cannot be deleted and includes the reason.
To receive help for EB-105EX e-mail services	#Help		RE: Help	Provides troubleshooting e-mail syntax.

## Printing a Configuration page from the copier operation panel

The Configuration page lists all the settings in effect in the current Setup. When you finish Setup, print a Configuration page to confirm your settings. You can print the Configuration page from Command WorkStation. For details, see [page 5-29](#).

When you make changes to Setup and choose Exit Setup, the EB-105EX restarts, allowing the EB-105EX to recognize the new settings and display them properly on the Configuration page. Allow the EB-105EX to restart and return to Idle before you print a Configuration page, particularly if you specified the DHCP or BOOTP protocol to obtain an IP address automatically for the EB-105EX.

Post the current Configuration page near the server for quick reference. Users need the information on this page, such as the current printer default settings.

Other pages you can print from the copier operation panel of the EB-105EX or from Command WorkStation include the PS Test Page, PCL Test Page, Job Log, PS Font List, PCL Font List, E-Mail Log, and FTP Log. For information on these pages, see the [Job Management Guide](#).

---

**TO PRINT THE CONFIGURATION PAGE**

1. **Make sure the information screen on the copier operation panel reads Idle.**

If Printing or RIPping appears, the EB-105EX is processing, and you must wait until the system finishes and reaches the Idle state.

2. **Press Menu/Cancel on the copier operation panel.**
3. **Select Print Pages.**
4. **Choose Configuration.**

## **Maintaining optimal EB-105EX performance**

The EB-105EX does not require maintenance. Beyond the obvious requirements of servicing and maintaining the copier and replenishing consumables, you can improve the overall performance of your system by doing the following:

- **Make the best use of your network connections**

Publish only connections that will be used; the EB-105EX constantly checks all published connections, even if they are inactive. Match the NetWare polling interval and the number of queues or connections to the demand for printing.

Review the published connections by printing a Configuration page. Eliminate the connections that are not being used. It is easy to re-establish them when needed.

- **Leave less urgent jobs to times when there is less network traffic or printing**

You can print recurring print jobs or jobs that are not urgent to the Hold queue. At low-traffic times, the administrator or a user of the job management tools with Operator privileges can move (or copy) all the Hold queue jobs to the Print queue for printing.

- **Reduce unnecessary Two-way Communication**

Large numbers of users running Fiery utilities, especially with frequent updates, may have a significant effect on EB-105EX performance.

- **Make sure you have adequate disk space on the EB-105EX**

Periodically review the list of jobs in the Hold queue, and the number of jobs being retained in the Printed queue.

An administrator can print or delete jobs that are in the Printed queue and Hold queue. Consider printing or offloading inactive jobs. If disk space on the EB-105EX is frequently low, you can disable the Printed queue (in Server Setup) and choose not to publish the Hold queue (in Printer Setup).

To move or remove queued jobs, use the job management tools. When you free up available disk space by removing inactive jobs, new jobs spool and print faster.

## Shutting down, rebooting, and restarting the EB-105EX

Generally, you can leave the EB-105EX and the copier running all the time. This section describes how to reboot, shut down, and restart the EB-105EX when necessary.

### Shutting down and rebooting the EB-105EX

You may need to shut down the EB-105EX for service, or reboot the entire EB-105EX system. When you do so, fonts that have been downloaded to the hard disk are not deleted. Print jobs in the Hold queue, the Printed queue, and jobs that have been processed but not printed are not deleted; they will be available for printing when you restart the EB-105EX.

---

#### TO SHUT DOWN THE EB-105EX

1. **Make sure the information screen on the copier operation panel reads Idle.**

If Printing or RIPping appears, the EB-105EX is processing, and you must wait until the system finishes and reaches the Idle state.

2. **Press Menu/Cancel on the copier operation panel.**
3. **Scroll down and select Shut Down.**
4. **Select Shut Down System.**
5. **When “It is now safe to turn off the EB-105EX” appears on the copier operation panel, turn it off using the main power switch.**

**NOTE:** After turning off the EB-105EX, turn off the copier’s main power also. Before turning it back on, wait at least three seconds.

---

## TO REBOOT THE EB-105EX

1. **Make sure the information screen on the copier operation panel reads Idle.**

If Printing or RIPping appears, the EB-105EX is processing, and you must wait until the system finishes and reaches the Idle state.

2. **Press Menu/Cancel on the copier operation panel.**
3. **Scroll down and select Shut Down.**
4. **Select Reboot System.**

The EB-105EX restarts after shutting down the EB-105EX hard disk.

## Restarting the EB-105EX

Restarting the EB-105EX resets the EB-105EX system software, but does not reboot the entire system. Network access to the EB-105EX is temporarily interrupted and all currently processing jobs are aborted.

---

## TO RESTART THE EB-105EX

1. **Make sure the information screen on the copier operation panel reads Idle.**

If Printing or RIPping appears, the EB-105EX is processing, and you must wait until the system finishes and reaches the Idle state.

2. **Press Menu/Cancel on the copier operation panel.**
3. **Scroll down and select Shut Down.**
4. **Select Restart Server.**

The EB-105EX system restarts without shutting down the EB-105EX hard disk.







## Appendix A: Troubleshooting

This chapter provides troubleshooting tips.

### Troubleshooting the EB-105EX

Startup diagnostics are described in the *Installation and Service Guide* for service technicians. Contact your authorized service/support center if you see startup error messages on Command WorkStation or if the EB-105EX does not reach the Idle state.

### Troubleshooting during Setup from the copier operation panel

The following section explains some error and alert messages you may see during Setup that might not be self-explanatory.

#### Network Setup messages

After this Setup screen	This message	Means
Enable AppleTalk (Network Setup>Protocol Setup>AppleTalk Setup)	No AppleTalk zone found.	The Ethernet network cable is not attached to the connector on the EB-105EX, or the network cable is not plugged into the hub or network. If your AppleTalk network has zones, and you want to specify a zone for the EB-105EX, you must connect the network cable to the EB-105EX before performing AppleTalk Setup. Could also mean the AppleTalk network does not have zones. Zones are not required for printing to the EB-105EX. Press OK to continue.
Protocol Setup or Service Setup (Network Setup)	You must first enable a network port.	Enable at least one network port (Ethernet) in Port Setup before beginning Protocol Setup or Service Setup.
Frame Type selection (Network Setup>Protocol Setup>IPX/SPX Setup)	Invalid frame size.	The network hub is not connected to a Novell computer when the EB-105EX tries to bind.
	Warning! IPX network number is zero.	No other IPX computer can be found on the network, or the network hub is not connected to the network when the EB-105EX tries to bind. When this occurs, the network number defaults to zero.

After this Setup screen	This message	Means
Enable NDS (Network Setup>Service Setup>PServer Setup>NDS Setup)	No NDS trees found.	No NDS trees were found on the Novell network. Check to see that the frame types on the EB-105EX are properly configured.
Select NDS Tree (Network Setup>Service Setup>PServer Setup>NDS Setup)	Warning! Selecting a new NDS tree deletes Bindery setup.	<p>You have previously connected the EB-105EX to a different NDS tree. NetWise supports only a single NDS tree connection. To avoid a potential conflict with an existing tree connection (for example, if the connection was made through a NetWare server in emulation mode), all bindery settings will be deleted.</p> <p>If you choose OK, and choose Yes in the following message (Delete Bindery setup and continue?), bindery settings are deleted and must be reentered in Bindery Setup.</p> <p>To avoid deleting the bindery settings, press Menu/Cancel, or select OK and choose No in the following message (Delete Bindery setup and continue?).</p> <p>Repeat NDS Setup without changing the NDS tree, or exit to Bindery Setup to review your current bindery settings.</p>
Navigating NDS tree (Network Setup>Service Setup>PServer Setup>NDS Setup)	___ is empty.	The chosen container contains no subcontainers or objects relevant to the current mode of navigation.
Bindery Setup (Network Setup>Service Setup>PServer Setup>Bindery Setup)	If you also plan to use NDS, set up NDS before Bindery.	No NDS settings are present. You are reminded to perform NDS Setup before Bindery Setup in case your network includes both NDS and bindery servers.
Select File Server From List (Network Setup>Service Setup>PServer Setup>Bindery Setup)	Error. Cannot open bindery connection to NDS server.	Select this server through NDS setup or disable NDS and select it through bindery.
	No NetWare file server found.	<p>No file server was found when EB-105EX queried the network to create a list of supported servers or a list of all servers.</p> <p>Check cable connections and make sure the NetWare server is turned on.</p>



After this Setup screen	This message	Means
Enter First Letters of Server Name (Network Setup>Service Setup>PServer Setup>Bindery Setup)	File server name not found. Try again?	No file server with those letters was found when EB-105EX queried the network. Check the name of the NetWare file server, check cable connections, and make sure the NetWare server is turned on.
View Server List, Edit Connection (Network Setup>Service Setup>PServer Setup>Bindery Setup)	No file server is selected.	No file server has been added in Bindery Setup.
Add File Server (Network Setup>Service Setup>PServer Setup>Bindery Setup)	All connections used. Remove server?	You have added the maximum number of bindery servers, which is eight. You now have the option of disconnecting one of those servers, so as to add another.
Add Server, Enter Your Login Name, Enter Your File Server Password (Network Setup>Service Setup>PServer Setup>Bindery Setup)	No NetWare print server found.	No print server was found when EB-105EX queried the file server you selected.  You must configure a print server and a print queue for every NetWare file server that will handle EB-105EX print jobs (see <a href="#">page 2-9</a> ).
Any Bindery Setup screen	Novell error code, followed by a message.	Novell NetWare has reported an error. Command WorkStation reports the error number and displays a brief message.  For the most common errors (listed in the following table), a screen is displayed that allows you to retry the action that evoked the error, such as adding a server. If that is not possible, you are prompted to notify the Novell administrator, who will need to troubleshoot the network. Consult NetWare Administrator documentation for further explanation of Novell error codes.

In Network Setup, when you configure the IPX (Novell) connection, the EB-105EX queries the network for Novell file servers and trees, and attaches to them temporarily. If a guest login is enabled, it is used. If not, you are prompted to log in from Command WorkStation.

If the selected NetWare file server or tree does not have a guest account, or if the guest account has expired or been disabled by the NetWare supervisor, you are prompted to notify the IPX (Novell) administrator. In that case, there are two options:

- Enable a guest account on the NetWare server or tree for the purpose of setup.
- Log in with a different account. At the ENTER LOGIN NAME screen, change the default name (guest) to supervisor or enter another valid login name. When you are prompted for a password, enter the correct password for the account you named.

For any Novell error, make sure:

- Your IPX (Novell) network is connected to the EB-105EX.
- The NetWare server you are trying to access is running.
- The Novell network has been configured with at least one print server and queue for the EB-105EX.
- You have the appropriate permissions and login information, including user name and password, if necessary.
- The EB-105EX is configured with the correct frame types for communication with the desired Novell servers.

### Novell error messages

Novell error	Cause	Suggested action or exit
220 Guest account not available.	The guest account, which you have chosen for initial login, has expired or has been disabled by the NetWare supervisor.	Enable a guest account on the NetWare server for the purpose of Setup. Alternatively, log in to a different account. In the ENTER LOGIN NAME screen, change the default name (guest) to supervisor or another valid login name. When you are prompted for a password, enter the correct password for the account you named.

Novell error	Cause	Suggested action or exit
222 Unable to log in to server. Password has expired for login name.	The server has connected to a file server, but is unable to log in to the file server or print server because the password has expired for the login account name or the named print server.	Select a different login account or print server. The error screen exits to the File Server Login screen (if login to file server failed) or NetWare Print Server screen (if login to Print Server failed). Pressing Menu/Cancel returns to the PServer Setup screen.
252 Unable to log in to server. Login does not exist.	The server has connected to a file server, but is unable to log in to the server because the selected login account does not exist on the file server.	Select a different login account. The error screen exits to the File Server Login screen. Pressing Menu/Cancel returns to the PServer Setup screen.
255 Unable to connect to file server. File server is down or out of connections.	The Novell file server is down or out of connections. This error occurs while the server is trying to connect to the requested file server.	Select a different file server (or try to get someone else to log off). Pressing Menu/Cancel returns to the PServer Setup screen.
nnn Notify IPX (Novell) Administrator.	Indicates other network errors when the EB-105EX is already connected to a file server. Something unexpected has happened and the user generally cannot recover without intervention of the network administrator. Error #197 indicates that you have exceeded the number of login attempts permitted for this account on the NetWare file server. Error #255 usually indicates a hard failure.	Notify the Novell administrator and report the error number. The error screen exits to the PServer Setup screen.

## Runtime error messages

For error messages related to canceling jobs and printing, including the Disk Full message and alerts to load media, see the *Job Management Guide*. These messages are reported by the job management tools.

You can turn on PostScript error reporting as a print option from Mac OS applications.

### Printer not found

Most failures to find a printer on the network are due to conflicting or missing name or address settings for the EB-105EX. You must enter names in specific places. The required names are:

- TCP/IP host name (also known as the DNS name), which is defined by your organization.

Enter the host name as the Server Name in EB-105EX Setup.

- Remote printer (internal machine) name. Use one of the following:

print  
hold

**NOTE:** If you change the DNS name (also known as the TCP/IP host name) of the EB-105EX, you must reconfigure one of the Fiery utilities on each workstation.

See the following table for the appropriate name.

In this location	For this item	IPX/SPX networks	TCP/IP networks	See
Server Setup	Server Name option	Administrator defines name	Administrator defines name	<a href="#">page 4-7</a>
Windows NT hosts file	host name	—	DNS name (TCP/IP host name)	<a href="#">page 2-1</a>
Windows NT setup for TCP/IP	lpd host name	—	DNS name (TCP/IP host name)	<a href="#">page 2-1</a>
	Name of printer on lpd host machine	—	print, hold, or direct	
UNIX /etc/printcap file (BSD)	rp line	—	print, hold, or direct	<a href="#">page 2-17</a>
Solaris	lpadmin queue name	—	print, hold, or direct	
NetWare administration utility	print queues (must be all lowercase and in English)	_direct _print _hold	—	<a href="#">page 2-7</a>
Add New Server dialog box, when configuring a Fiery utility	New Device	Utilities are not supported over IPX/SPX.	EB105EX	<i>User Software Installation Guide</i>
	Server Name	Utilities are not supported over IPX/SPX.	DNS name (TCP/IP host name)	

**Cannot connect to EB-105EX with Fiery utilities**

If users cannot connect to the EB-105EX, check the following:

- EB-105EX Setup—the appropriate network protocol must be enabled, with the correct parameters (for example, for TCP/IP, the IP address), and you must publish either the Print queue or Hold queue.

Printing a Configuration page allows you to quickly check these settings.

- On the client workstation—the appropriate network protocol(s) must be loaded, and your Windows directory should contain a configured Efinl.ini file.

**Cannot connect to the EB-105EX with Command WorkStation**

If there is a problem connecting to the EB-105EX, an error message is displayed.

The problem can occur when:

- The EB-105EX is initially turned on.
- The EB-105EX restarts.
- You have changed settings affecting the server address and have not reconfigured the connection to the server.

If you see this problem, try the following solutions, in this order:

- A remote workstation running Fiery utilities or WebTools may be interfering by obtaining status information. If possible, close the remote application, and reconnect.
- Restart Command WorkStation and reconnect.
- Check the configuration of the connection and modify it, if necessary, or delete the Efinl.ini file and reconnect, as described in the *User Software Installation Guide*. For Windows9x/Me, the Efinl.ini file is located in the \WINDOWS directory. For Windows NT 4.0/2000/XP, the Efinl.ini file is located in the \WINNT directory.
- Restart the EB-105EX.

For information on other error conditions, see the *Job Management Guide*.



# Index

## Numerics

- 100BaseT connector 1-11
- 10BaseT 1-11
- 8-pin RJ-45 connector 1-11

## A

- access level scenarios 3-6
- access to network and software 3-1
- accessing Setup
  - from copier operation panel 4-2
  - from Windows computer 5-1
- Account Name option 4-31
- Adapters/Ports information, Setup 5-7
- Add File Server option 4-23
- Add File Server, Bindery Setup 4-22, 5-16
- Add Server option 4-23
- administrator
  - features of server 4-39
  - functions 7-1 to 7-2
  - installing the server 1-2
  - managing print jobs 7-1
  - password 7-2
- Administrator Email Address option 4-32
- Administrator password
  - changing from copier operation panel 7-2
  - changing from Windows computer 7-4
  - for setting the WebLink destination 3-5, 6-3
  - privileges 3-3
- Allow Courier Substitution
  - option 4-36, 5-27
- AppleTalk 1-5
  - network diagram 1-5
  - protocol setup 4-11, 5-8
  - server name 4-7, 5-3
- AppleTalk Setup
  - from copier operation panel 4-11
  - from Windows computer 5-9

- AppleTalk zone 5-9
- AppleTalk Zone option 4-11
- Auto Clear Job Log Every 55 Jobs
  - option 4-40, 5-5
- Auto Print Job Log Every 55 Jobs
  - option 4-40, 5-5

## B

- Bindery file servers
  - connecting 4-23, 5-16
  - defined 2-8
  - emulation mode 2-7, 4-17, 5-10
  - setting up context 2-12 to 2-13
- Bindery Setup
  - adding Bindery connections 4-23, 5-16
  - on server 4-22 to 4-26, 5-16
  - removing Bindery
    - connections 4-26, 5-18
    - requirements for NetWare server 4-22
- Bindery Setup menu 4-22
- BOOTP protocol 4-12, 4-13
- Broker, NDPS printing 2-15
- Browse to the root of the Print Queue
  - Subtree message 4-21
- buttons, copier operation panel 4-3

## C

- changing
  - Administrator password 7-2, 7-4
  - Bindery connection 4-25
  - host name or DNS name C-6
  - Novell print server, Bindery 4-22, 4-25
- characters
  - used on copier operation panel 4-7, 5-4
- Choose Domain option 4-29
- Choose File Server option 4-25
- Chooser
  - AppleTalk 4-7, 5-3

## I-2 Index

- choosing a Bindery Server to
    - connect 4-23, 5-16
  - Clear Each Scan Job Now option 4-8
  - Clear Each Scan Job option 4-8
  - Clear Frame Types option 4-16
  - Clear Job Log Every 55 Jobs option 4-40
  - Clear Server option 7-5
  - clearing the Job Log 4-40, 5-5
  - client setup
    - Fiery WebTools 6-2
    - network printing 2-5 to 2-6, 2-13 to 2-17
    - overview 1-2
  - Command WorkStation
    - problems connecting to server C-8
  - Comment option, Windows
    - printing 4-29, 5-21
  - Configuration page
    - determining IPX frame types
      - bound 4-16
    - printing from a Windows
      - computer 5-29
    - printing from the copier operation
      - panel 4-4, 7-10
    - troubleshooting connection
      - problems C-8
  - Configure button, Fiery WebTools 6-2
  - configuring network clients
    - NetWare 2-13
    - Windows NT 2-5
  - configuring network servers
    - NetWare 2-8, 2-9
    - UNIX 2-19
    - Windows NT 2-3
  - configuring servers
    - from copier operation panel 4-11 to 4-41
    - from Windows computer 5-1 to 5-28
    - preparing for 3-9
  - connected Novell servers, Bindery 4-25
  - connecting
    - copier interface cable 3-9
    - network cable 1-10
    - to a Bindery file server 4-23, 4-24
    - to multiple Bindery file servers 4-22
  - control levels 3-6
    - scenarios 3-6
    - setting 3-1
  - Convert Paper Sizes option 4-36, 5-27
  - copier operation panel
    - accessing Setup 4-2
    - buttons 4-3
    - Change Password option 4-39
    - Clear Server option 7-5
    - down button 4-3
    - Functions menu 4-4
    - illustrated 4-2
    - Job Log Setup 4-39
    - Menu/Cancel button 4-3
    - Network Setup 4-9
    - Printer Setup 4-34
    - PS (PostScript) Setup 4-35
    - Server Setup 4-7
    - up button 4-3
  - Courier font, substitution with 4-36, 5-27
- ## D
- date, setting 5-4
  - Default Paper Sizes option 4-35, 5-27
  - Delete Scan Jobs option 5-4
  - destination, Fiery WebLink 6-3
  - device name 5-3, 5-26, 5-27, C-7
  - DHCP protocol 4-12, 4-13
  - diagrams of network setup 1-4 to 1-9
  - Direct connection
    - described 3-1, 3-2
    - publishing 4-34, 5-26
    - required for downloading fonts 3-2
  - disconnecting a Bindery file
    - server 4-22, 4-26
  - disk space 7-11

## I-3 Index

- DNS (Domain Name Server) 2-2, 2-4, C-6
- DNS Setup 4-14
- Domain Name option 4-15
- Domain or Workgroup option, Windows printing 5-21
- down button 4-3
- downloading fonts, Direct connection requirement 3-2

## E

- Edit Connection option 4-25
- Edit Connection, Bindery Setup explained 4-22
- E-mail Service Setup option 5-24
- E-mail Setup 4-30
- Enable AppleTalk option 4-11
- Enable Auto IP Configuration option 4-12
- Enable DNS option 4-14
- Enable E-mail Services option 4-30
- Enable Ethernet option 4-11, 5-7
- Enable FTP Services option 4-32, 5-23
- Enable IPP option 4-30, 5-22
- Enable IPX Auto Frame Type option 4-16
- Enable LPD option 4-17, 5-11
- Enable NDS option 4-18, 5-12
- Enable Port 9100 Print Services option 4-30, 5-23
- Enable Print via E-mail option 5-24
- Enable Printed Queue option 4-8, 5-3
- Enable Printing Groups option 4-8
- Enable Proxy Setup option 4-32
- Enable PServer mode option 5-12
- Enable PServer option 4-17
- Enable Remote Diagnostics option 4-31
- Enable TCP/IP for Ethernet option 4-12, 5-9
- Enable Web Services option 4-29, 5-22
- Enable Windows Printing option 4-27, 5-20
- enabling
  - client utilities 4-12
  - Fiery WebTools 4-29, 4-30, 5-22

- Enter First Letters of Server Name option 4-23
- Enter Password message 4-20
- Enter Print Server Password message 4-20
- Enter Your File Server Password option 4-24
- Enter Your File Server Password, Bindery Setup 4-24
- Enter Your Login Name option 4-24
- Enter Your Print Server Password option 4-24, 4-26
- error messages C-1
  - “No AppleTalk zone found” 4-11
  - during Setup C-1
  - during startup C-3
  - NetWare C-3
  - runtime C-6
- Ethernet 1-11
  - frame types 5-9
  - network 2-8
  - Port Setup 4-11
- Ethernet Setup from copier operation panel 4-10
  - Ethernet Speed 4-11
  - in Port Setup 4-11
  - in Protocol Setup 4-12
- Ethernet Setup from remote Setup Port Setup 5-7
- Ethernet Speed option 4-11, 5-7
- Exit Bindery Setup option 4-26
- exiting Setup, copier operation panel 4-41

## F

- Fiery WebDownloader, described 3-5
- Fiery WebLink 3-5
  - setting the destination 6-3
- Fiery WebSetup, described 3-5
- Fiery WebSpooler
  - described 3-4
  - reprinting jobs in Printed queue 4-8

## I-4 Index

- Fiery WebTools 6-1 to 6-2
  - enabling 4-29, 4-30, 5-22
  - enabling only certain WebTools 6-2
  - Installer 3-5
  - Status 3-4
- File Server 5-16, 5-17, 5-18
- File Server Login option 4-24
- File Server Password (Bindery) 4-24
- File Server, Bindery 5-16
- Font Number option 4-38
- font pitch 4-38
- Font Source option 4-38
- font substitution 4-36, 5-27
- fonts
  - printer fonts on server 4-4
  - printing font list 4-4
- frame types supported
  - AppleTalk 4-15
  - IPX/SPX 4-15
  - IPX/SPX, Ethernet 4-15, 5-9
  - TCP/IP 4-15
- From List option (adding a file server) 4-23
- FTP Setup 4-32
- Functions menu, copier operation panel 4-4

## G

- Gateway Address option 4-14
- gateway address, setting 4-14
- General Setup options 5-4 to 5-5
- Get DNS Address option 4-14
- Get Gateway Address Automatically option 4-13
- guest login (Novell)
  - in Bindery Setup 4-23
  - in Network Setup C-4
- Guest privileges (no password) for WebSpooler 3-4

## H

- Hold queue 4-34, 5-26
  - described 3-1, 3-2

- host name 2-2, 2-3, 2-4, C-6
  - database 2-2
- Host Name option 4-15

## I

- improving server performance 7-11
- Incoming Server option 4-31
- Incoming Server option, E-mail Setup 5-24
- Installer WebTool, *see* Fiery WebTools
- installing server on network 1-2
- Internet
  - accessing server with Fiery WebTools 3-4
  - WebLink access 6-3
- Internet Printing Protocol, enabling 4-30
- IP address
  - assigning automatically 4-12, 4-13
  - for Ethernet Setup 4-13
  - for WINS Name Server 5-21
  - required for TCP/IP printing 2-18
- IP Address option 4-13
- IPP Setup 4-30
- IPX (Novell) 2-7 to 2-13
  - Bindery file server, connecting 4-22
  - NDS (Novell Directory Services) 2-12, 4-17, 5-10
  - NetWare client setup 2-13
  - NetWare server setup 2-10
  - network diagram 1-6
  - overview of printing 2-9
  - setting up printing 2-9
  - terms used to describe 4-22
  - tips for experts 2-8
- IPX/SPX
  - polling interval 5-19
  - protocol setup 4-15
  - selecting frame types 4-16
  - Setup 4-15
  - summary of Setup options 4-9
- IPX/SPX Setup 4-15
- Is user login needed to browse NDS tree? option 4-19

**J**

- Java to support Internet browser 6-2
- Job Log
  - clearing automatically 4-40
  - clearing jobs from 7-5
  - defined 4-40
  - printing automatically 4-40
  - printing from the copier operation panel 4-4
  - setting the page size used 4-41, 5-5
- Job Log Setup
  - from copier operation panel 4-40
  - from Windows computer 5-5
- job management tools
  - defined 3-1
  - deleting jobs with 7-5
  - printing Job Log 4-40
- Jobs Saved in Printed Queue option 4-8, 5-4

**L**

- lpd (TCP/IP) 2-17
  - printing 4-17, 5-11
  - setup summary 2-18 to 2-19

**M**

- Mac OS computers
  - on AppleTalk network 1-5
- maintaining server performance 7-11
- maximum server connections, Bindery 4-22
- Member Printing 4-8
- Menu/Cancel button 4-3
- messages, *see* error messages
- multiple Bindery file servers,
  - connecting 4-22

**N**

- naming the server 4-7, C-6
- Navigate NDS Tree to the Print Server message 4-20
- Navigate NDS Tree to the Print Server option 4-20

- Navigate to NDS tree to User Login object message 4-19
- NDPS (Novell Distributed Print Services) 2-14
- NDPS Manager 2-14
- NDS (Novell Directory Services) 2-12, 4-17, 5-10
  - defined 2-8
  - enabling 4-18
  - print queue subtree 4-21
  - Setup on server 4-18 to 4-21
  - setup requirements 4-18
- NDS Setup option 4-18
- NDS tree
  - browsing 4-18, 4-19
  - browsing to print queue root 4-20
  - browsing to Print Server 4-20
  - browsing to User Login object 4-19
  - password 4-19
- NDS Tree name option 4-19
- NETADMIN 2-11
- NETBEUI 1-7
- NetWare
  - Bindery and NDS on the same network 4-17
  - Bindery Services 4-17
  - Directory Services 4-17, 5-10
  - error messages C-3, C-4
  - NDS (Novell Directory Services) 2-12
  - print server poll interval 4-27
  - setting up network on the copier operation panel 4-17
- NetWare File Server, Bindery
  - connecting 4-22, 4-23
  - finding available servers 4-23
  - removing connection 4-26
  - selecting for editing 4-25
  - setting up more than one 4-22
- NetWare Print Console 2-13
- NetWare Print Server option 4-25
- NetWare Print Server poll interval 4-27

NetWare Print Server, Bindery 4-24, 4-25

    changing the selection 4-22, 4-25

    connecting 4-24

    password 4-24

NetWare Server Poll Interval 4-27

NetWare Server Poll Interval in Seconds

    option 4-27

NetWise, supported networking

    environments 2-7

network

    AppleTalk 1-5

    cable 3-9

    installation diagrams 1-2 to 1-9

    installation summary 1-3

    IPX (Novell) 1-3, 1-4, 1-6

    lpd (TCP/IP) 1-3, 1-4, 1-9

    protocols supported 1-1

    using multiple protocols 1-4

    with Windows NT 1-7

Network Setup

    exiting 4-10

    from copier operation panel 4-9 to 4-33

    from Windows computer 5-6 to 5-23

    part of initial Setup 5-1

    troubleshooting C-4

New Password option 7-3

Novell, *see* NetWare

## O

Operator password 3-4, 7-2

    privileges 3-3

Orientation option 4-37

Outgoing Mail Server option, E-mail

    Setup 5-24

Outgoing Server option 4-31

## P

Paper Size for System Pages option 4-38

Paper Size option 4-37

paper size used by default 4-35

Paper Sizes option 5-27

Password option 4-32

Password, E-mail Setup 5-25

passwords 7-3

    Administrator privileges 3-3

    Administrator, changing 7-2

    Bindery print server 4-24

    Fiery WebTools 3-4

    for WebLink destination 3-5

    for WebSpooler 3-4

    NDS Tree 4-19

    Novell file server, Bindery 4-24

    Operator privileges 3-3

    Print Server 4-20

    setting 3-3

PC compatibles

    on IPX (Novell) network 1-6

    on TCP/IP network 1-9

PCL (Printer Control Language) Setup 4-37

PCONSOLE (NetWare utility) 4-24

PDF files, font substitution in 4-36, 5-27

Personality option 4-35

Pitch option 4-38

Polling Interval

    E-mail Setup 5-25

polling interval for NetWare print

    jobs 4-27, 5-19

Polling Interval option 4-32

Polling Interval options 4-27

Port 9100 printing 5-23

Port 9100 Queue option 4-30, 5-23

Port 9100 Setup 4-30

Port Setup from copier operation panel

    Ethernet Setup 4-11

PostScript error 4-36

PostScript Setup options, accessing 4-35

PostScript Setup, *see* PS Setup

Primary DNS Server option 4-14

Print Job Log Every 55 Jobs option 4-40

Print Pages command

    copier operation panel 4-4

## I-7 Index

- Print queue 3-2, 4-8, 4-34, 5-26
    - described 3-1, 3-2
    - publishing 4-34
  - print queues 4-8
    - NDS 4-21
    - NetWare server (Bindery) 4-23
  - Print Server
    - adding 5-17
    - selecting 5-17
  - Print Server password 4-20
  - Print Start Page option 4-7, 5-3
  - Print Start Page, printing 5-3
  - Print to PostScript Error option 4-36, 5-28
  - Print via E-mail option 4-31
  - Printed queue 3-2, 4-8
  - printer
    - connection failure C-6
    - not found C-6
    - not in Chooser C-6
  - Printer Agent, NDPS 2-14
  - Printer Setup
    - from copier operation panel 4-34
    - from Windows computer 5-26
    - part of initial Setup 5-1
    - Printed queue options 5-3
  - printing
    - Configuration page 4-4
    - Configuration page from copier operation panel 7-10
    - connections 3-1
    - connections and queues 4-34
    - font list 4-4
    - Job Log automatically 4-40
    - reprinting previously printed jobs 3-2
    - server information pages 4-4
    - start page at startup 4-7, 5-3
  - printing connections 3-1
  - problems, *see* troubleshooting
  - protocols
    - for assigning IP address automatically 4-13
    - network 1-1
    - setting up 4-11, 5-8
      - See also* AppleTalk, IPX, IPX/SPX, TCP/IP
  - Proxy Server IP Address option 4-33
  - Proxy Server Port Number option 4-33
  - Proxy Server Timeout option 4-33
  - Proxy Server User Name option 4-33
  - Proxy Server User Password option 4-33
  - PS (PostScript) Setup 4-35, 5-27
  - PServer
    - defined 4-17
  - PServer Setup
    - options 4-17
  - Publish Direct Connection
    - option 4-34, 5-26
  - Publish Hold Queue option 4-34, 5-26
  - Publish Print Queue option 4-34, 5-26
  - publishing connections, overview 3-1
- ## Q
- queues
    - clearing all 7-5
    - publishing 4-34, 5-26
- ## R
- Remove File Server option 4-26
  - Remove File Server, Bindery Setup
    - explained 4-22
  - removing
    - Bindery file server connection 4-26
  - reprinting jobs 3-2
  - Resume Printing command
    - copier operation panel 4-5
  - RJ-45 connector 1-11
  - root login 2-19
  - Run Setup command 4-5
- ## S
- Save Changes
    - Job Log Setup, copier operation panel 4-41

## I-8 Index

- Network Setup, copier operation
    - panel 4-10
  - PCL Setup 4-39
  - Printer Setup, copier operation
    - panel 4-35, 4-36
  - Setup, copier operation panel 4-8
  - Save Changes option 4-8, 4-35, 4-39, 4-41
  - Search Name option (adding a file server) 4-23
  - Secondary DNS Server option 4-14
  - Select File Server option 4-23
  - Select Frame Types option 4-16
  - Select NDS Tree option 4-18
  - Select protocol (Setup option) 4-13
  - selecting
    - Bindery servers 4-25
    - default paper size 4-35, 5-27
  - server
    - back view showing connectors 1-10
    - copier operation panel 4-2
    - maintaining and improving performance 7-11
    - naming 4-7, 5-3
    - network installation summary 1-3
    - power switch 1-10
    - Setup, *see* Setup
  - Server Name option 4-7, 5-3
  - Server Name option, Windows printing 4-28, 5-21
  - Server Setup 3-7
    - exiting 5-28
    - from copier operation panel 4-7
    - from Windows computer 5-3
    - part of initial Setup 5-1
  - Server should look for print queues in message 4-20
  - Server Type option 4-31
  - Server Type option, E-mail Setup 5-24
  - Service Setup options 4-17, 5-10
  - Set Domain Name option, Windows printing 4-29
  - setting up NDS connection 2-12
  - Setup
    - PCL Setup 4-37
    - screen types 4-6
    - See also* Server Setup, Network Setup, Printer Setup, PS Setup, Job Log Setup
  - Setup from copier operation panel
    - accessing 4-2
    - administrative functions 4-39
    - error messages C-1
    - Job Log Setup 4-40
    - Network Setup 4-9
    - Port Setup 4-11
    - Printer Setup 4-34
    - Protocol Setup 4-11 to 4-15
    - Server Setup 4-7
    - Service Setup 4-17
    - summary 4-1
  - Shut Down command, from copier operation panel 4-5
  - SMB, *see* Windows printing
  - Start Page, printing 4-7
  - Status WebTool, *see* Fiery WebTools
  - Subnet Mask option 4-13
  - superuser 2-19
  - Supported Servers 4-25
  - Suspend Printing command
    - from copier operation panel 4-5
  - Symbol Set option 4-38
  - System Date option 5-4
  - System Time option 5-4
- ## T
- TCP/IP
    - adding server to network 2-4
    - Ethernet Setup from copier operation panel 4-12
    - host name C-6
    - http protocol 1-1
    - lpd printing 5-11
    - lpd protocol 1-1



## I-9 Index

- nbt protocol 1-1
- network diagram 1-9
- protocol setup 4-12
- published connections 4-34
- setting up printing from
  - Windows NT 2-2 to 2-6
- settings 5-9
- Setup from copier operation panel 4-12
- with UNIX workstations 2-17
- terminology, Novell 4-22
- Test Page
  - printing from copier operation panel 4-4
- time, setting 5-4
- Timeout option 4-32
- Timeout option, E-mail Setup 4-32, 5-25
- To Exit Bindery Setup
  - explained 4-22
- Transmission Speed (Ethernet) option 5-7
- troubleshooting
  - Command WorkStation connection problems C-8
  - connection to printer fails C-6
  - Printer not found in the selection list of Fiery utilities C-8
  - Printer not found—TCP/IP or IPX networks C-6
  - Setup, copier operation panel C-1
- twisted pair cable 1-11

## U

- UNIX
  - managing print jobs 2-20
  - on TCP/IP network 1-9, 2-17
  - printcap file C-7
  - printing to server 2-20
  - remote printer name C-7
  - setting up printing to server 2-19
  - tips for experts 2-17

- up button 4-3
- Use Automatic Configuration option 4-28
- Use Character Set option 4-7, 5-4
- Use WINS Name Server option 4-28
- utilities
  - enabling protocol on the server 4-12
  - required print connections 4-34

## V

- View Server List option 4-25
- View Server List, Bindery Setup
  - explained 4-22

## W

- Web Services Setup 4-29, 5-22
- WebDownloader, *see* Fiery WebDownloader
- WebLink, *see* Fiery WebLink
- WebSetup, *see* Fiery WebSetup
- WebSpooler, *see* Fiery WebSpooler
- WebTools, *see* Fiery WebTools
- Windows computers, printing without a
  - Windows NT 4.0 server 2-6
- Windows NT
  - network environment 1-7
  - setting up Windows NT server 2-3
  - with TCP/IP 1-7, 1-9
- Windows
  - printing 1-1, 2-6, 4-27, 5-10, 5-20
    - domain issues 3-8
    - setting domain or workgroup 4-29, 5-21
- Windows Setup options 4-27
- WINS IP Address option 4-28, 5-21
- WINS name server 4-28
- Workgroup or Domain option 4-29





